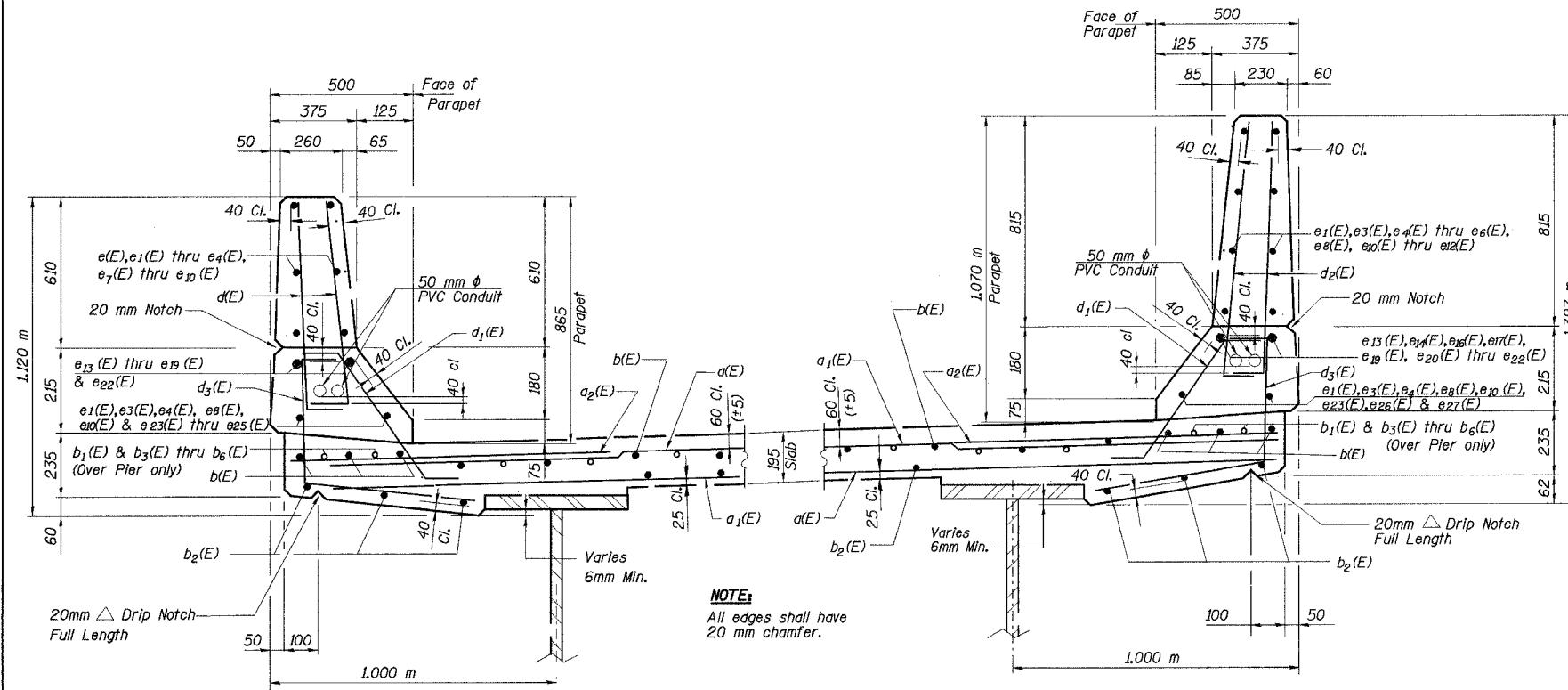


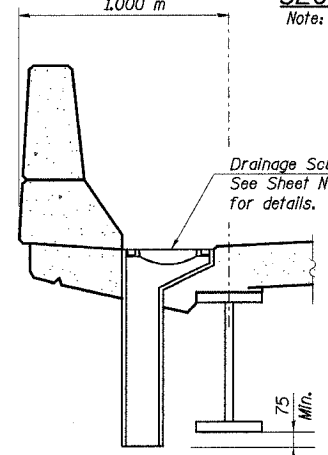
STATE OF ILLINOIS
DEPARTMENT OF TRANSPORTATION

ROUTE NO.	SECTION	COUNTY	TOTAL SHEETS	SHEET NO.	SHEET NO. 16
F. A. I. 80/94	*	COOK	870	626	56 SHEETS
FED. ROAD DIST. NO. 1	ILLINOIS	FED. AID PROJECT-	CONTRACT NO. 62108		

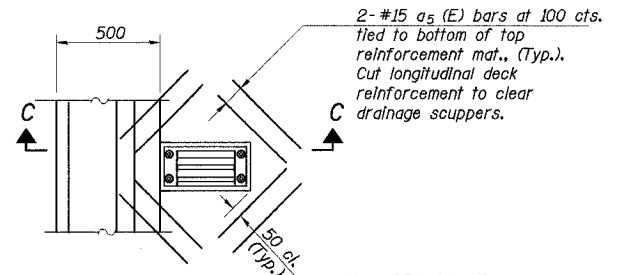


SECTION THRU NORTH PARAPET
Note: The Minimum clearance between the bottom of the conduit and the top of the hook of the d(E) bar shall be 40 mm.

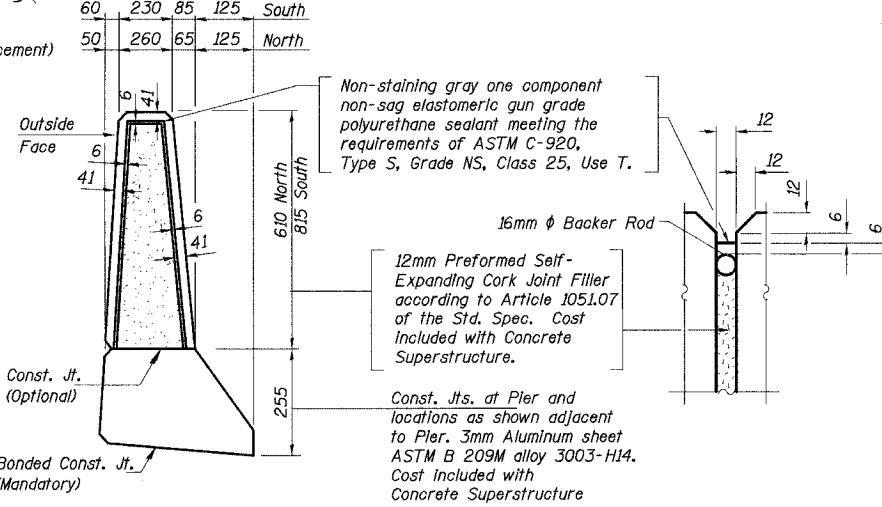
SECTION THRU SOUTH PARAPET
Note: The Minimum clearance between the bottom of the conduit and the top of the hook of the d2(E) bar shall be 40 mm.



SECTION C-C



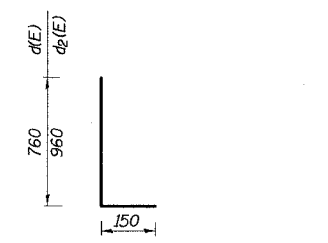
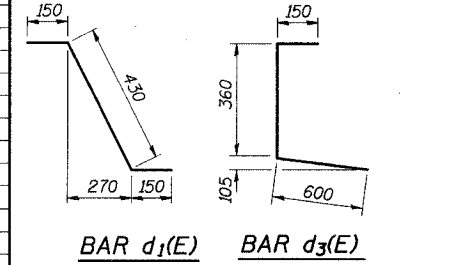
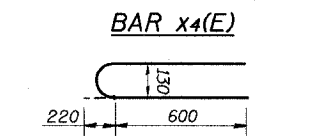
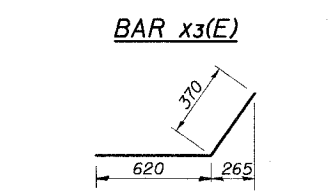
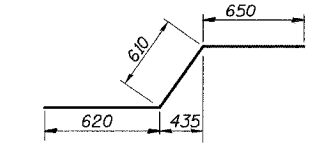
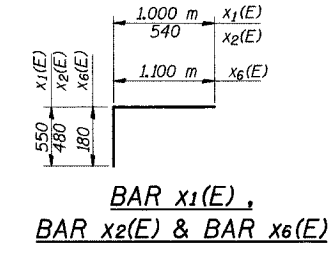
PLAN
(Showing reinforcement)



PARAPET JOINT DETAILS

BILL OF MATERIAL

Bar	No.	Size	Length (m)	Shape
a(E)	2,715	#15	8.07	—
a1(E)	2,715	#15	7.01	—
a2(E)	1,612	#20	1.20	—
a3(E)	60	#15	2.58	—
a4(E)	8	#15	7.92	—
a5(E)	40	#15	0.90	—
a6(E)	24	#15	0.90	—
b(E)	1,375	#15	9.00	—
b1(E)	106	#20	9.76	—
b2(E)	1,242	#15	8.30	—
b3(E)	159	#20	7.61	—
b4(E)	106	#20	10.15	—
b5(E)	106	#20	9.13	—
b6(E)	106	#20	9.46	—
d(E)	1,568	#15	0.91	—
d1(E)	1,505	#15	0.73	—
d2(E)	1,572	#15	1.11	—
d3(E)	1,505	#15	1.11	—
e(E)	24	#15	5.74	—
e1(E)	36	#15	4.58	—
e2(E)	60	#15	5.63	—
e3(E)	36	#15	5.13	—
e4(E)	36	#15	4.70	—
e5(E)	32	#15	5.92	—
e6(E)	80	#15	5.84	—
e7(E)	60	#15	5.03	—
e8(E)	36	#15	4.15	—
e9(E)	30	#15	5.09	—
e10(E)	36	#15	4.42	—
e11(E)	80	#15	5.21	—
e12(E)	40	#15	5.27	—
e13(E)	12	#25	8.68	—
e14(E)	8	#25	4.58	—
e15(E)	12	#25	10.23	—
e16(E)	8	#25	5.13	—
e17(E)	8	#25	4.70	—
e18(E)	18	#25	9.29	—
e19(E)	8	#25	4.42	—
e20(E)	12	#25	10.57	—
e21(E)	18	#25	9.60	—
e22(E)	8	#25	4.15	—
e23(E)	12	#15	8.65	—
e24(E)	16	#15	7.52	—
e25(E)	18	#15	8.92	—
e26(E)	16	#15	7.90	—
e27(E)	24	#15	7.20	—
x1(E)	52	#15	1.55	—
x2(E)	52	#15	1.02	—
x3(E)	52	#15	1.88	—
x4(E)	52	#15	1.19	—
x5(E)	52	#15	1.42	—
x6(E)	52	#15	1.28	—
Concrete Superstructure	Cu m		788.2	
Reinforcement Bars, Epoxy Coated	kg		136,640	
Bridge Deck Grooving	Sq m		2,976	
Protective Coat	Sq m		3,490	



DESIGNED	R.A.
CHECKED	M.R.
DRAWN	R.A.
CHECKED	M.R. / H.T.

ILLINOIS DEPARTMENT OF TRANSPORTATION
I-94 EAST BOUND / IL 394 SOUTH BOUND
DECK DETAILS & BILL OF MATERIAL
EB I-94 OVER THORN CREEK
F.A.P. 332 SECTION (0203.1 & 0312-708W) R-3
COOK COUNTY
STA. 20+809.000 STRUCTURE NO. 016-2807
DATE: 7/18/05
SCALE: NTS
Soodan
Soodan & Associates, Inc.
100 North LaSalle Street, Suite 1800
Chicago, Illinois 60602

J:\Beauchamp\JA\34562\CADD\IBSN_2807\Cds\CTR_19_2807.dwg 9/20/05 4:28:07 PM
12-SEP-2005 14:21