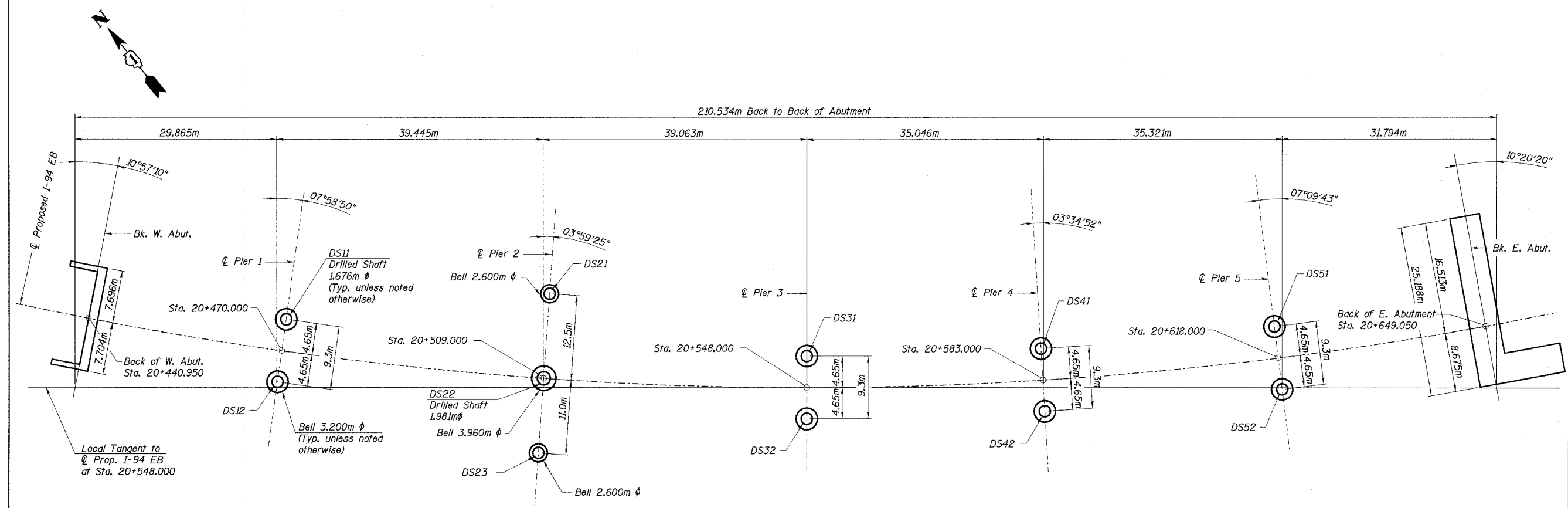
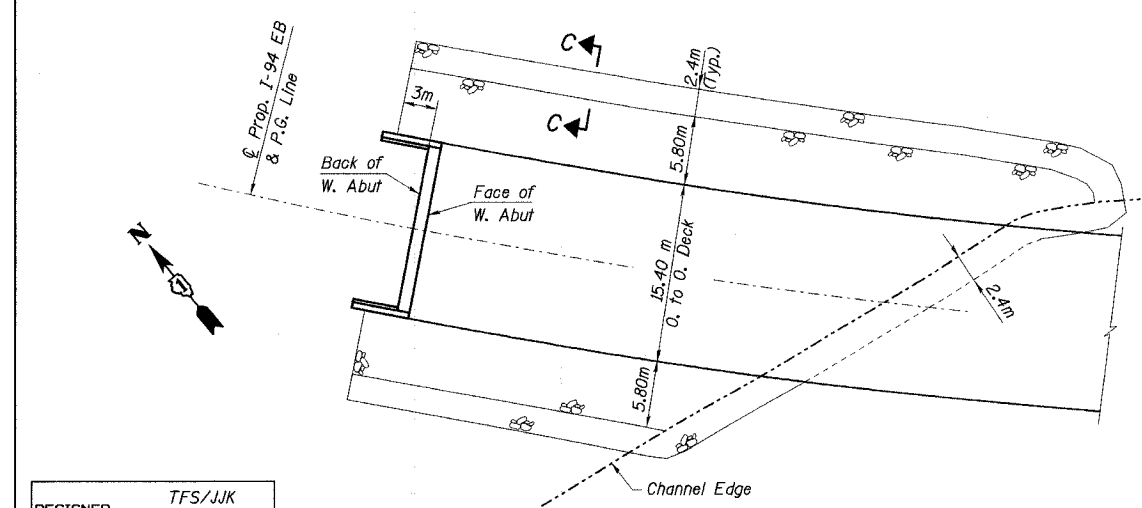


STATE OF ILLINOIS
DEPARTMENT OF TRANSPORTATION

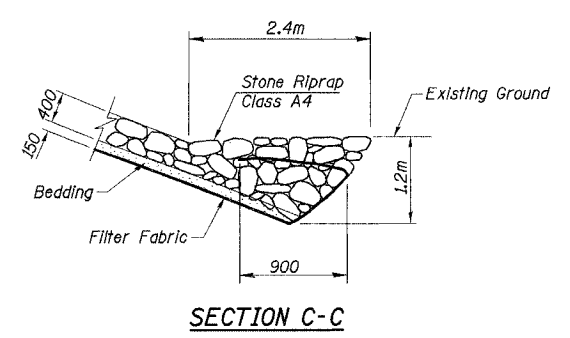
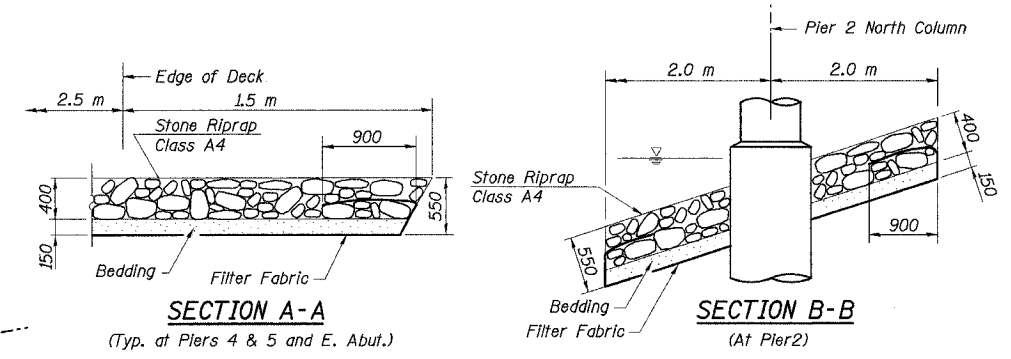
| | | | | | |
|------------------------|---------|-----------------------------|--------------|-----------|-------------|
| ROUTE NO. | SECTION | COUNTY | TOTAL SHEETS | SHEET NO. | SHEET NO. 4 |
| F. A. I. 80/94 | * | COOK | 870 | 614 | 56 SHEETS |
| FED. ROAD DIST. NO. 1 | | ILLINOIS FEED. AID PROJECT- | | | |
| (0203.1 & 0312-708WR-3 | | CONTRACT NO. 62108 | | | |



SUBSTRUCTURE LAYOUT PLAN



WEST ABUTMENT RIPRAP TREATMENT



- Notes:
1. All dimensions are in millimeters (mm) except as noted.
 2. See Sheet 1 of 56 for location of Sections A-A and B-B

| | |
|----------|---------|
| DESIGNED | TFS/JJK |
| CHECKED | HDA/PCA |
| DRAWN | ALR/JJK |
| CHECKED | OD/PCA |

ILLINOIS DEPARTMENT OF TRANSPORTATION
I-94 EAST BOUND / IL 394 SOUTH BOUND
SUBSTRUCTURE LAYOUT & RIPRAP DETAILS
EB I-94 OVER THORN CREEK
F.A.I. 94 SECTION (0203.1 & 0312-708W) R-3
COOK COUNTY
STA. 20+509.000 STRUCTURE NO. 016-2807
DATE JUL 18, 2005
SCALE ---

HNTB

L:\keltce\JA\34562\GAD\03\SN_2807\cads\CTR_19_2807\vol1\9214s_2807.dgn 18-AUG-2005 13:17