

STATE OF ILLINOIS  
DEPARTMENT OF TRANSPORTATION

ROUTE NO.	SECTION	COUNTY	TOTAL SHEETS	SHEET NO.	SHEET NO. 3
F. A. I. 80/94		COOK	870	613	56 SHEETS
FED. ROAD DIST. NO. 1		ILLINOIS FED. AID PROJECT-		CONTRACT NO. 62108	
0203.1 & 0312-708WR-3					

**CURVE DATA**  
**CL94EB-1**

PI STA. = 20+452.899  
 $\Delta = 51^\circ-16'-46''$   
 $D = 10^\circ-13'-53''$   
 $R = 560.000$  m  
 $T = 268.785$  m  
 $L = 501.197$  m  
 $E = 61.164$  m  
 $S.E. = 6.0\%$   
 PC STA. = 20+184.114  
 PT STA. = 20+685.312  
 S.E. IN = STA. 20+148 to STA. 20+206  
 S.E. OUT = STA. 20+664 to STA. 20+712

**CURVE DATA**  
**BL394NB-1**

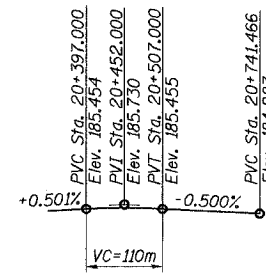
PI STA. = 40+402.644  
 $\Delta = 38^\circ-44'-03''$   
 $D = 5^\circ-43'-47''$   
 $R = 1,000.000$  m  
 $T = 351.510$  m  
 $L = 676.039$  m  
 $E = 59.981$  m  
 $S.E. = 4.8\%$   
 PC STA. = 40+051.134  
 PT STA. = 40+727.173  
 S.E. IN = STA. 40+000 to STA. 40+081  
 S.E. OUT = STA. 40+708 to STA. 40+821

**CURVE DATA**  
**BLRAMPJ-1**

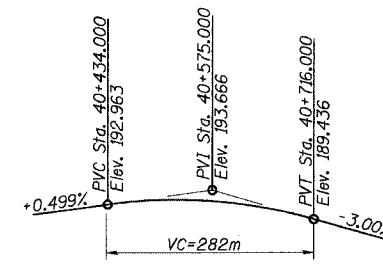
PI STA. = 140+553.29  
 $\Delta = 115^\circ-02'-32''$   
 $R = 302.000$  m  
 $T = 474.431$  m  
 $L = 606.376$  m  
 $E = 260.395$  m  
 PC STA. = 140+078.859  
 PT STA. = 140+685.231  
 S.E. Transition: 0.02 m/m  
 • STA. 140+000 to 0.06 m/m • STA. 140+090  
 Full S.E. = 0.06 m/m  
 from STA. 140+090 to STA. 140+625

**CURVE DATA**  
**BLRAMPJ-2**

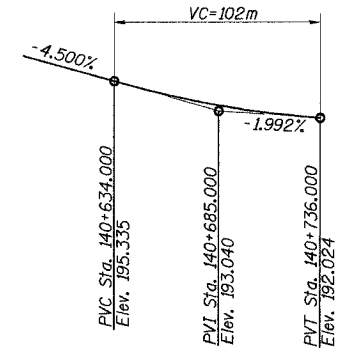
PI STA. = 140+781.248  
 $\Delta = 2^\circ-38'-11''$   
 $R = 2,000.000$  m  
 $T = 46.019$  m  
 $L = 92.022$  m  
 $E = 0.529$  m  
 PC STA. = 140+735.229  
 PT STA. = 140+827.252  
 S.E. Transition: 0.06 m/m  
 • STA. 140+625 to 0.00 m/m • STA. 140+707.5  
 From 0.0 m/m • Sta 140+707.5 to 0.02 m/m • STA. 140+735  
 Constant S.E. 0.02 m/m from STA. 140+735



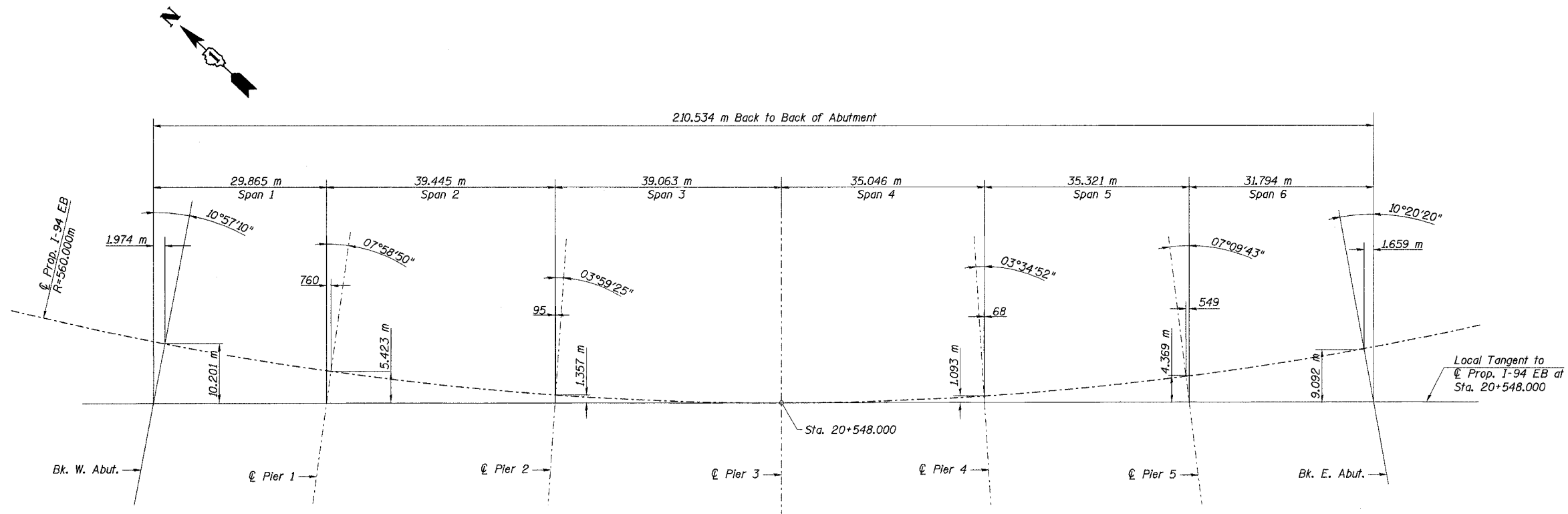
**PROPOSED PROFILE**  
**GRADE I-94 EB**



**PROFILE GRADE**  
**IL RTE. 394 NB**



**PROFILE GRADE RAMP J**



**OFFSET SKETCH**

Note:  
1. All dimensions are in millimeters (mm) except as noted.

DESIGNED	JJK
CHECKED	PCA
DRAWN	LK
CHECKED	PCA

J:\Beauchamp  
 E:\34562\CADD\1\SN.2887\cadd\CTR\_19\_2887\sn19024a\_2887.dgn  
 08-JUL-2005 14:19

ILLINOIS DEPARTMENT OF TRANSPORTATION  
 I-94 EAST BOUND / IL 394 SOUTH BOUND  
**OFFSET SKETCH, PROFILES**  
**& CURVE DATA**  
 EB I-94 OVER THORN CREEK  
 F.A.I. 94 SECTION (0203.1 & 0312-708W) R-3  
 COOK COUNTY  
 STA. 20+509.000 STRUCTURE NO. 016-2807  
 DATE JUL 18, 2005  
 SCALE ----  
**HNTB**