

FBI RTE	SECTION	COUNTY	TOTAL SHEETS	SHEET NO.
80/94	*	COOK	870	608
STA. TO STA.		TO STA.		
FED ROAD DIST. NO.		ILLINOIS FED. AID PROJECT		

**BILL OF MATERIAL BRIDGE APPROACH PAVEMENT (SPECIAL)**

BAR NO.	SIZE	LENGTH (M)	SHAPE
a <sub>40</sub> (E)	135 #30	8.93	
a <sub>41</sub> (E)	68 #15	8.90	
a <sub>42</sub> (E)	68 #15	2.06	
a <sub>43</sub> (E)	68 #15	1.70	

b <sub>40</sub> (E)	60 #15	10.27	
b <sub>41</sub> (E)	16 #15	10.27	
h <sub>40</sub> (E)	48 #15	10.27	

ITEM	UNIT	QUANTITY
BRIDGE APPROACH PAVEMENT (SPECIAL)	M <sup>2</sup>	176
REINFORCEMENT BARS, EPOXY COATED (1)	KG	9976

(1) INCLUDED FOR PAYMENT UNDER "BRIDGE APPROACH PAVEMENT (SPECIAL)"

**BILL OF MATERIAL PAVEMENT TRANSITION**

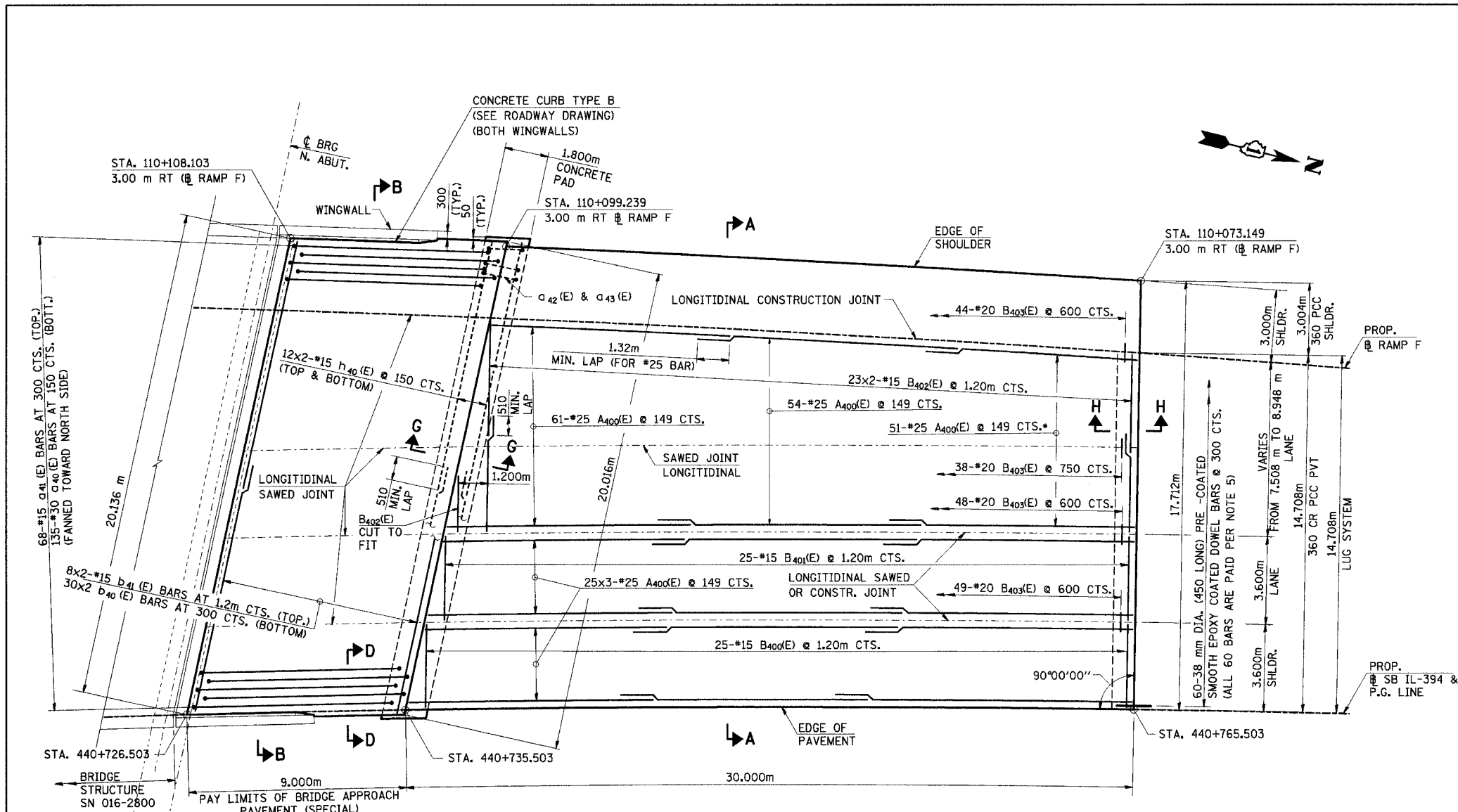
BAR NO.	SIZE	LENGTH (M)	SHAPE
A <sub>400</sub> (E)	316 #25	10.85	
B <sub>400</sub> (E)	25 #15	3.53	
B <sub>401</sub> (E)	25 #15	3.53	
B <sub>402</sub> (E)	46 #15	4.73	
B <sub>403</sub> (E)	179 #20	0.75	

ITEM	UNIT	QUANTITY
REINFORCEMENT BARS, EPOXY COATED (2)	KG	14393

(2) INCLUDED FOR PAYMENT UNDER THE CORRESPONDING PAY ITEM (SEE NOTE 5)

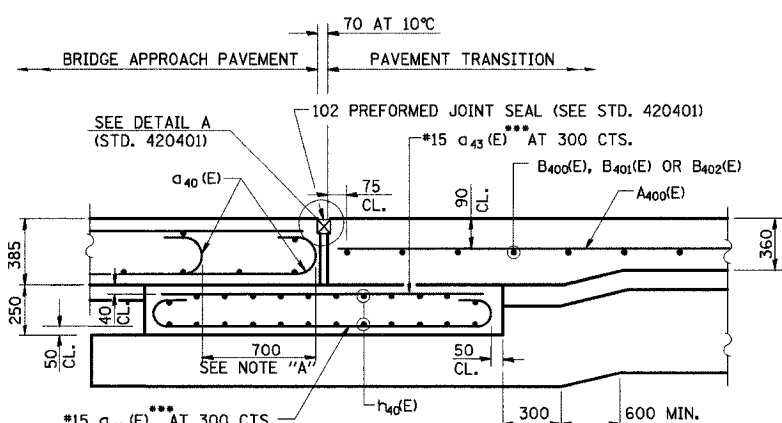
**NOTES:**

- WORK THIS SHEET WITH BRIDGE APPROACH PAVEMENT STANDARD 420401 AND PAVEMENT JOINTS STD. 420001.
- BARS INDICATED THUS "23x3-#15 ETC. INDICATE 23 LINES OF BARS WITH 3 LENGTHS PER LINE.
- REINFORCEMENT BARS DESIGNATED "(E)" SHALL BE EPOXY COATED.
- FOR THE 9 m. APPROACH PAVEMENT AND SUPPORTING PAD, ALL WORK AND MATERIALS ARE INCLUDED FOR PAYMENT UNDER "BRIDGE APPROACH PAVEMENT (SPECIAL)".
- FOR THE BRIDGE APPROACH PAVEMENT TRANSITION, ALL WORK AND MATERIALS ARE INCLUDED FOR PAYMENT UNDER "CONTINUOUSLY REINFORCED PORTLAND CEMENT CONCRETE PAVEMENT-360MM", "PCC SHOULDERS-360MM"
- ALL DIMENSIONS ARE IN MILLIMETERS (mm) EXCEPT AS NOTED.
- TRANSVERSE BARS SHALL BE SET WITH 50 mm CLEARANCE TO EDGE OF PAVEMENT AND 25 mm FROM CL SAWED LONGITUDINAL JOINT.
- PLACE B<sub>403</sub>(E) AT MID-DEPTH OF SLAB.
- FOR SECTIONS A-A, B-B AND D-D SEE SHEET NO. 609 OF 870.



**PLAN**

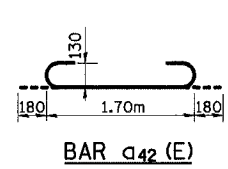
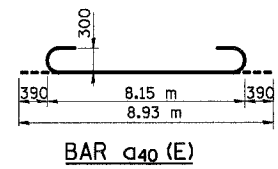
NOTE "A"  
CUT a (E) AND b (E) BARS  
TO CLEAR DRAIN



**SECTION G-G**  
(SHOWING REINFORCEMENT)

NOTE "A"  
STAGGER a<sub>40</sub> (E) BARS AS  
SHOWN ON PLAN-FULL WIDTH

FOR DETAILS NOT SHOWN, SEE  
"SECTION C-C AND G-G- RIGID  
PAVEMENT", STANDARD 420401



\*\*\* AT RIGHT ANGLES TO CONCRETE PAD;  
FLARE AT EAST AND WEST END

REVISIONS	
NAME	DATE

ILLINOIS DEPARTMENT OF TRANSPORTATION  
I-94 EAST BOUND / IL 394 SOUTH BOUND  
**BRIDGE APPROACH PAVEMENT (SPECIAL)  
& PAVEMENT TRANSITION**  
SB IL RTE 394 OVER THORN CREEK  
STRUCTURE NO. 2800  
NORTH APPROACH 1 OF 2

HORIZ SCALE:  
VERT SCALE:  
DATE: JUL 18, 2005

DRAWN BY: LK  
CHECKED BY: PY

**HNTB**