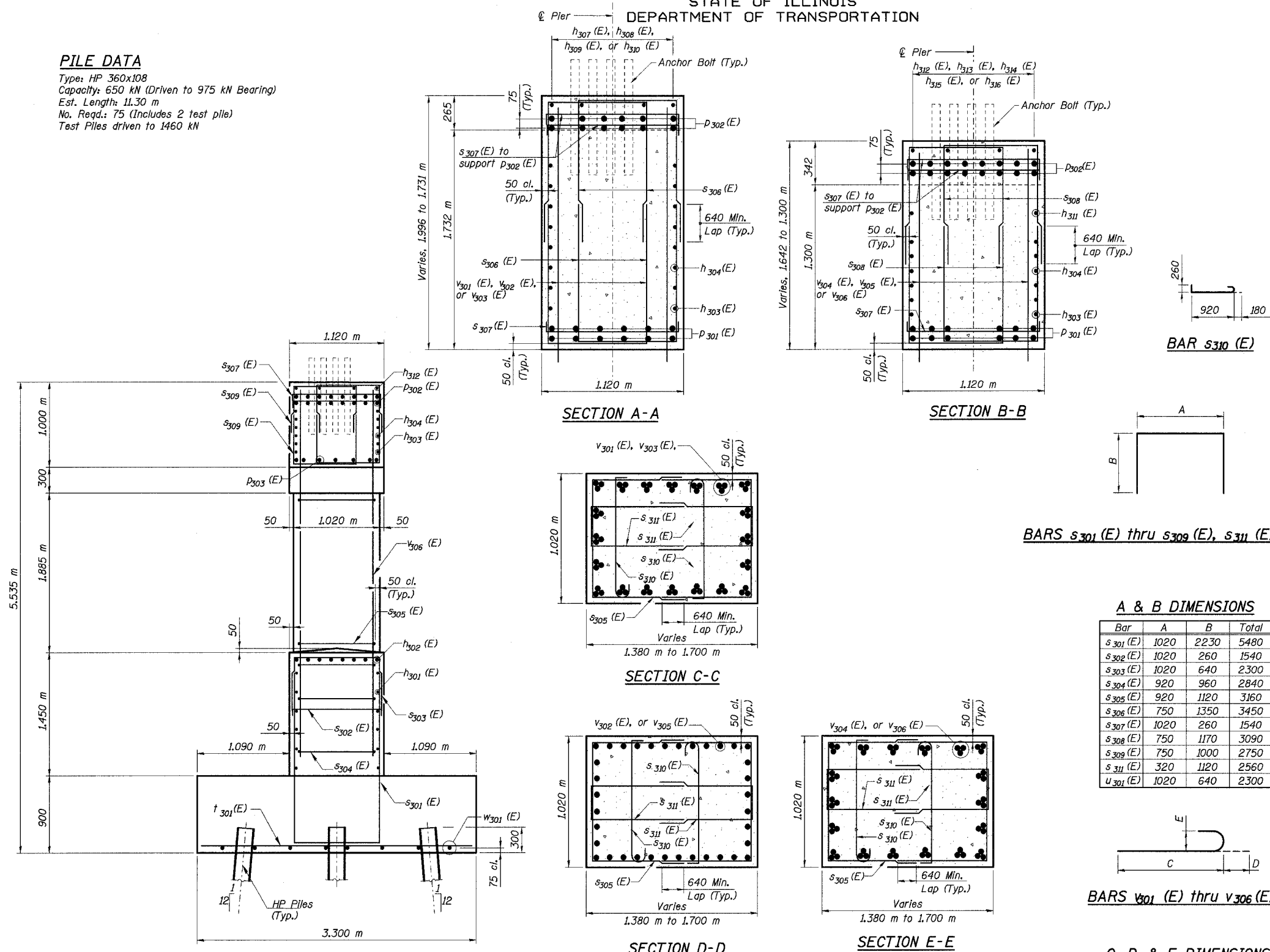


STATE OF ILLINOIS
DEPARTMENT OF TRANSPORTATION

ROUTE NO.	SECTION	COUNTY	TOTAL SHEETS	SHEET NO.	SHEET NO. 78
F. A. I. 80/94	*	COOK	870	592	91 SHEETS
FED. ROAD DIST. NO. 1		ILLINOIS	FED. AID PROJECT-		
			CONTRACT NO. 62108		

PILE DATA

Type: HP 360x108
Capacity: 650 kN (Driven to 975 kN Bearing)
Est. Length: 11.30 m
No. Req'd: 75 (Includes 2 test pile)
Test Piles driven to 1460 kN

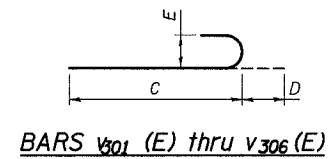


BILL OF MATERIAL

Bar	No.	Size	Length (m)	Shape
h ₃₀₁ (E)	36	#15	8.160	—
h ₃₀₂ (E)	21	#25	8.960	—
h ₃₀₃ (E)	4	#15	12.440	—
h ₃₀₄ (E)	24	#15	13.380	—
h ₃₀₅ (E)	2	#15	8.350	—
h ₃₀₆ (E)	2	#15	3.150	—
h ₃₀₇ (E)	4	#15	3.090	—
h ₃₀₈ (E)	4	#15	6.800	—
h ₃₀₉ (E)	4	#15	5.750	—
h ₃₁₀ (E)	4	#15	2.020	—
h ₃₁₁ (E)	2	#15	6.710	—
h ₃₁₂ (E)	4	#15	2.490	—
h ₃₁₃ (E)	4	#15	3.100	—
h ₃₁₄ (E)	4	#15	4.110	—
h ₃₁₅ (E)	4	#15	2.480	—
h ₃₁₆ (E)	4	#15	2.530	—
p ₃₀₁ (E)	24	#35	11.390	—
p ₃₀₂ (E)	28	#30	13.390	—
p ₃₀₃ (E)	12	#15	1.900	—
s ₃₀₁ (E)	144	#25	5.320	┌
s ₃₀₂ (E)	122	#15	1.540	┌
s ₃₀₃ (E)	122	#15	2.560	┌
s ₃₀₄ (E)	48	#15	2.840	┌
s ₃₀₅ (E)	132	#15	3.160	┌
s ₃₀₆ (E)	200	#20	3.470	┌
s ₃₀₇ (E)	86	#15	1.540	┌
s ₃₀₈ (E)	188	#20	3.090	┌
s ₃₀₉ (E)	56	#20	2.750	┌
s ₃₁₀ (E)	132	#15	1.360	┌
s ₃₁₁ (E)	132	#15	2.560	┌
u ₃₀₁ (E)	148	#30	3.200	—
u ₃₀₂ (E)	49	#15	2.300	┌
v ₃₀₁ (E)	60	#45	5.210	┌
v ₃₀₂ (E)	36	#25	4.290	┌
v ₃₀₃ (E)	60	#45	5.040	┌
v ₃₀₄ (E)	54	#45	4.870	┌
v ₃₀₅ (E)	36	#25	3.930	┌
v ₃₀₆ (E)	54	#45	4.650	┌
w ₃₀₁ (E)	54	#15	9.840	—
ITEM		UNIT	QUANTITY	
Structure Excavation		m ³	220	
Concrete Structures		m ³	210.6	
Reinforcement Bars, Epoxy Coated		kg	32,490	
Furnishing Steel Piles HP 360x152		m	825.0	
Driving Steel Piles		m	825.0	
Test Pile Steel HP 360x152		Each	2	
Controlled Low Strength Material		m ³	6.9	

A & B DIMENSIONS

Bar	A	B	Total
s ₃₀₁ (E)	1020	2230	5480
s ₃₀₂ (E)	1020	260	1540
s ₃₀₃ (E)	1020	640	2300
s ₃₀₄ (E)	920	960	2840
s ₃₀₅ (E)	920	1120	3160
s ₃₀₆ (E)	750	1350	3450
s ₃₀₇ (E)	1020	260	1540
s ₃₀₈ (E)	750	1170	3090
s ₃₀₉ (E)	750	1000	2750
s ₃₁₁ (E)	320	1120	2560
u ₃₀₁ (E)	1020	640	2300



C, D, & E DIMENSIONS

Bar	C	D	E
v ₃₀₁ (E)	4550	660	520
v ₃₀₂ (E)	4010	280	200
v ₃₀₃ (E)	4380	660	520
v ₃₀₄ (E)	4210	660	520
v ₃₀₅ (E)	3650	280	200
v ₃₀₆ (E)	3990	660	520

Notes:

1. Work this Sheet with Sheet No. 75, 76, & 77 of 91.
2. All dimensions are in millimeters (mm) except as noted.

L:\s1\44...
 22-AUG-2005 09:48
 C:\ADD\B\SN_2880\cadd\CTR_19_2880\psd\98244a_2880.dgn

DESIGNED	DBT
CHECKED	BDL
DRAWN	CAB
CHECKED	DBT

END VIEW

ILLINOIS DEPARTMENT OF TRANSPORTATION
I-94 EAST BOUND / IL 394 SOUTH BOUND

PIER 3 SECTION & DETAILS

SB IL ROUTE 394 OVER THORN CREEK
F.A.P. 332 SECTION (02033.1 & 0312-708W) R-3
COOK COUNTY

STA. 440+704.350 STRUCTURE NO. 016-2800

DATE JUL 18, 2005
SCALE ---

HNTB