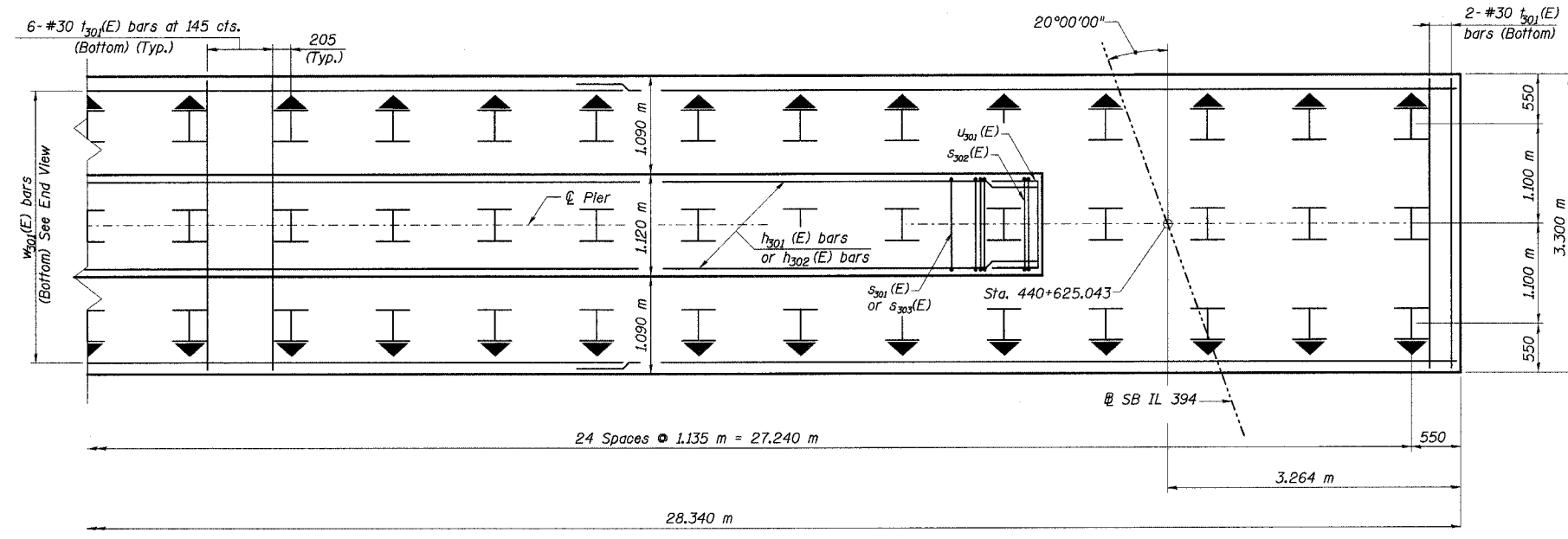
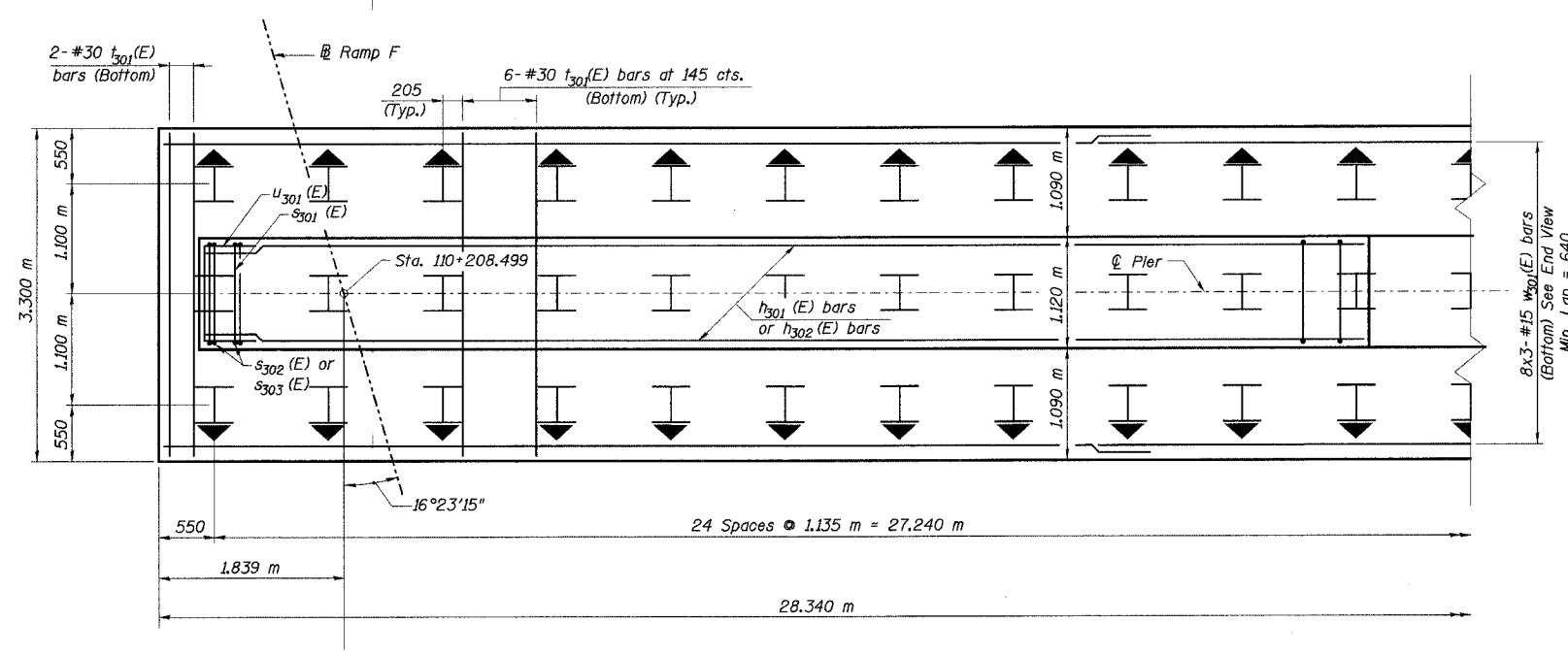


STATE OF ILLINOIS
DEPARTMENT OF TRANSPORTATION

ROUTE NO.	SECTION	COUNTY	TOTAL SHEETS	SHEET NO.	SHEET NO. 77
F. A. I. 80/94	-	COOK	870	591	91 SHEETS
FED. ROAD DIST. NO. 1	ILLINOIS	FED. AID PROJECT-			
02033.1 & 0312-708W R-3			CONTRACT NO. 62108		



- Notes:
1. Work this sheet with No. 75, 76, & 78 of 91.
 2. All dimensions are in millimeters (mm) except as noted.
 3. Reinforcement Bars designated (E) shall be epoxy coated.
 4. For bill of Materials and bar bending diagrams, See Sheet No. 78 of 91 Sheets.
 5. Bars Indicated thus "11x3-#15 cts." indicates 11 lines of bars with 3 lengths per line.

Indicates Battered Pile

I:\k1145
 I:\24562\CADD\BA\SN-28000\cadd\CTR_L19_28000\psd190334a_28000.dgn
 22-AUG-2005 09:48

DESIGNED	DBT
CHECKED	BDL
DRAWN	CAB
CHECKED	DBT

FOOTING PLAN

ILLINOIS DEPARTMENT OF TRANSPORTATION
I-94 EAST BOUND / IL 394 SOUTH BOUND
PIER 3 FOOTING PLAN
SB IL ROUTE 394 OVER THORN CREEK
F.A.P. 332 SECTION (02033.1 & 0312-708W) R-3
COOK COUNTY
STA. 440+704.350 STRUCTURE NO. 016-2800
DATE JUL 18, 2005
SCALE ---

