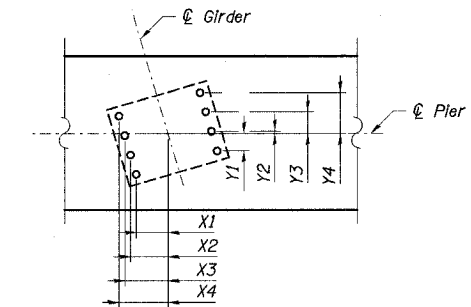
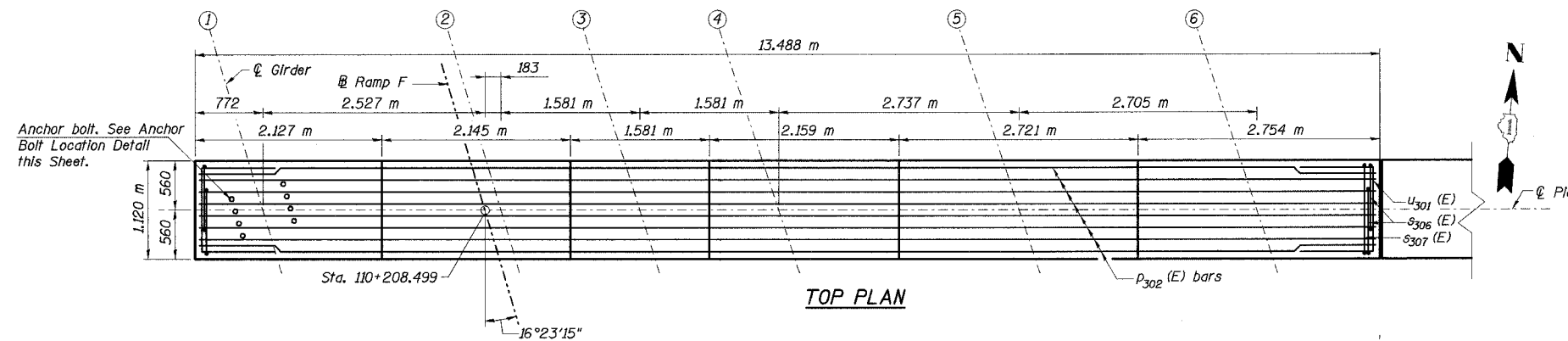


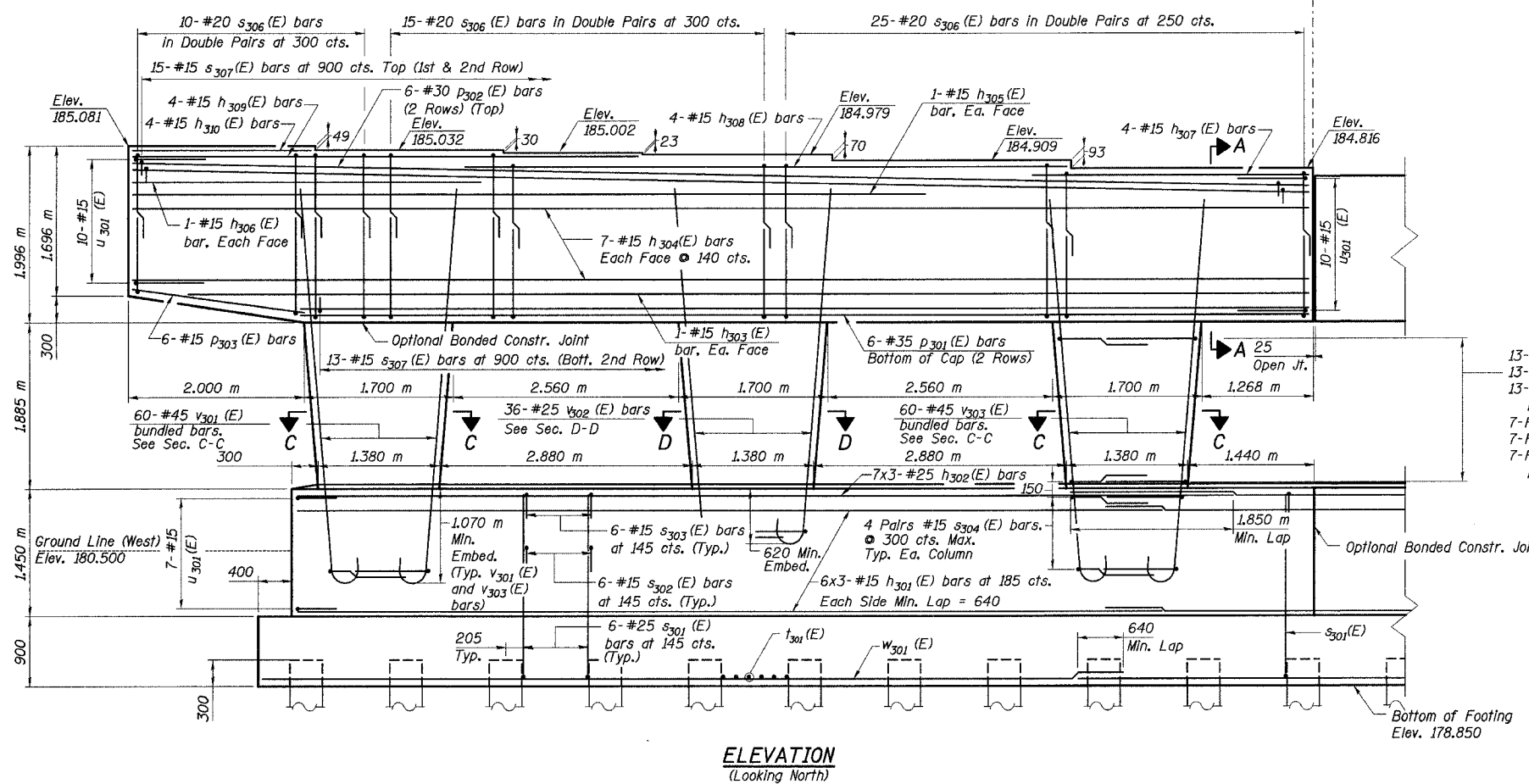
STATE OF ILLINOIS
DEPARTMENT OF TRANSPORTATION

ROUTE NO.	SECTION	COUNTY	TOTAL SHEETS	SHEET NO.	SHEET NO. 75
F. A. I. 80/94	*	COOK	870	589	91 SHEETS
FED. ROAD DIST. NO. 1		ILLINOIS FED. AID PROJECT-		CONTRACT NO. 62108	
(02033.1 & 0312-708W) R-3					



ANCHOR BOLT LOCATION DETAILS

Gir.	X1	X2	X3	X4	Y1	Y2	Y3	Y4
1	231	272	313	355	125	16	157	297
2	231	272	313	355	125	16	157	297
3	226	270	313	357	119	21	161	301
4	221	267	313	358	114	26	166	304
5	221	267	313	358	114	26	166	304
6	221	267	313	358	114	26	166	304



13-Pairs #15 S305 (E) bars at 150 cts.
13-Pairs #15 S310 (E) bars
13-Pairs #15 S311 (E) bars
In Exterior Columns
7-Pairs #15 S305 (E) bars at 300 cts.
7-Pairs #15 S310 (E) bars
7-Pairs #15 S311 (E) bars
In Interior Column

Notes:

1. Work this sheet with No. 76, 77, & 78 of 91.
2. Space reinforcement in cap to miss anchor bolts.
3. Pour steps monolithically with cap.
4. All dimensions are in millimeters (mm) except as noted.
5. Reinforcement Bars designated (E) shall be epoxy coated.
6. For Bill of Materials and bar bending diagrams, See Sheet No. 78 of 91 Sheets.
7. Bars indicated thus "11x3-#15 cts." indicates 11 lines of bars with 3 lengths per line.
8. For bearing orientation see Sheet No. 59 of 91.

DESIGNED	DBT
CHECKED	BDL
DRAWN	CAB
CHECKED	DBT

L:\3145\3145\CADD\AS\N_2880\01\CTR_L19_2880\01\190314_2880.dgn
 22-AUG-2005 09:46

ILLINOIS DEPARTMENT OF TRANSPORTATION
I-94 EAST BOUND / IL 394 SOUTH BOUND
PIER 3 PLAN & ELEVATION (WEST)

SB IL ROUTE 394 OVER THORN CREEK
F.A.P. 332 SECTION (02033.1 & 0312-708W) R-3
COOK COUNTY
STA. 440+704.350 STRUCTURE NO. 016-2800

DATE JUL 18, 2005
SCALE ---

HNTB