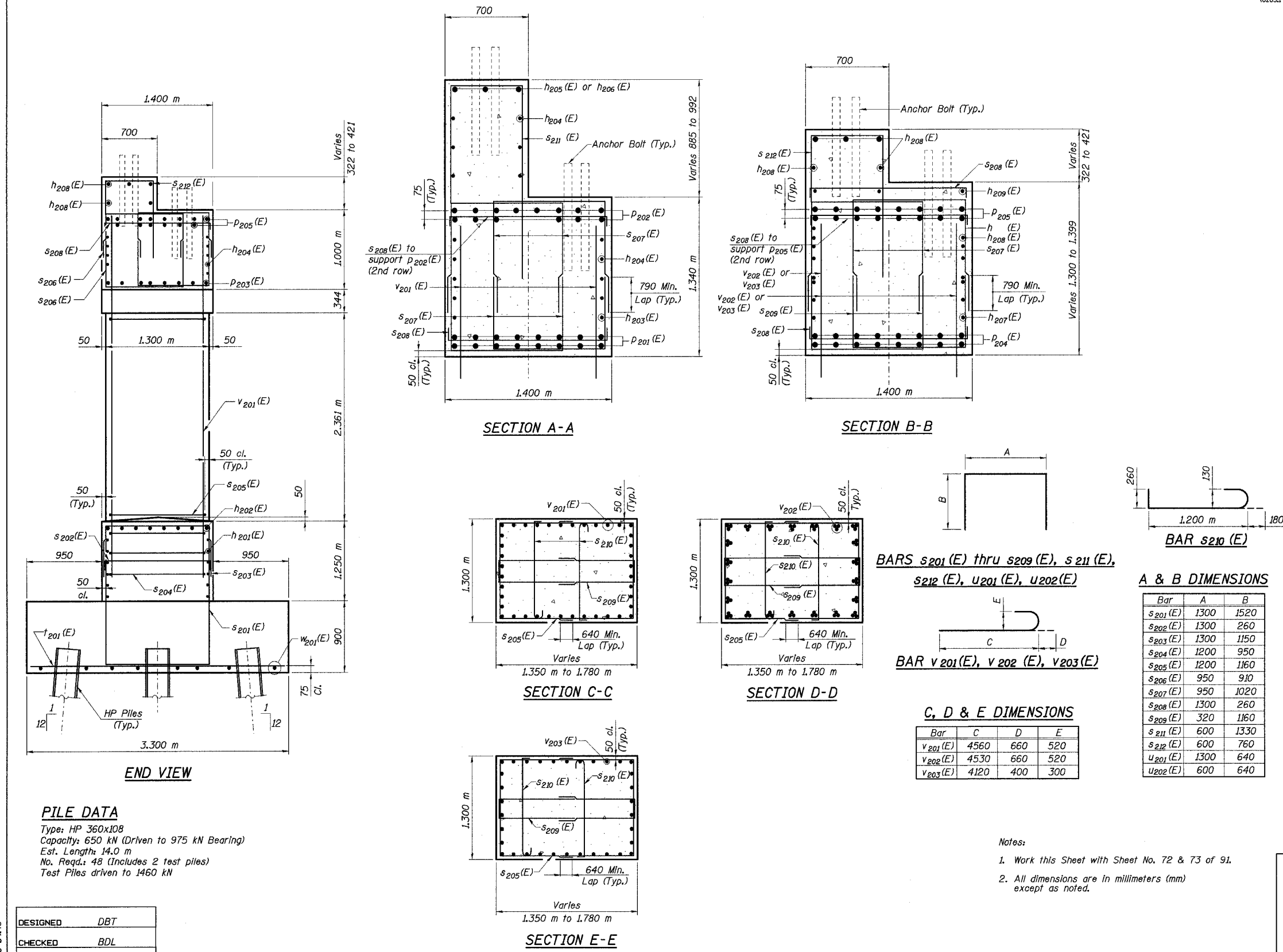


STATE OF ILLINOIS
DEPARTMENT OF TRANSPORTATION

ROUTE No.	SECTION	COUNTY	TOTAL SHEETS	SHEET NO.	SHEET NO. 74
F. A. I. 80/94	*	COOK	870	588	91 SHEETS
FED. ROAD DIST. NO. 1		ILLINOIS	FED. AID PROJECT-		CONTRACT NO. 62108
(0203.1 & 0312-708W) R-3					



BILL OF MATERIAL

Bar	No.	Size	Length (m)	Shape
h ₂₀₁ (E)	36	#15	8,920	—
h ₂₀₂ (E)	21	#35	10,460	—
h ₂₀₃ (E)	2	#15	10,860	—
h ₂₀₄ (E)	14	#15	11,810	—
h ₂₀₅ (E)	3	#15	5,580	—
h ₂₀₆ (E)	3	#15	6,560	—
h ₂₀₇ (E)	4	#15	8,530	—
h ₂₀₈ (E)	26	#15	9,010	—
h ₂₀₉ (E)	3	#15	7,410	—
p ₂₀₁ (E)	16	#30	9,810	—
p ₂₀₂ (E)	14	#30	11,810	—
p ₂₀₃ (E)	16	#15	1,900	—
p ₂₀₄ (E)	16	#35	15,360	—
p ₂₀₅ (E)	16	#30	17,360	—
s ₂₀₁ (E)	90	#15	4,340	□
s ₂₀₂ (E)	39	#15	1,820	□
s ₂₀₃ (E)	78	#15	3,600	□
s ₂₀₄ (E)	38	#15	3,100	□
s ₂₀₅ (E)	144	#15	3,520	□
s ₂₀₆ (E)	28	#20	2,770	□
s ₂₀₇ (E)	464	#20	2,990	□
s ₂₀₈ (E)	71	#15	1,820	□
s ₂₀₉ (E)	144	#15	2,640	□
s ₂₁₀ (E)	144	#15	1,640	□
s ₂₁₁ (E)	40	#15	3,260	□
s ₂₁₂ (E)	58	#15	2,120	□
t ₂₀₁ (E)	94	#30	3,200	—
u ₂₀₁ (E)	38	#15	2,580	□
u ₂₀₂ (E)	12	#15	1,880	□
v ₂₀₁ (E)	80	#45	5,220	□
v ₂₀₂ (E)	132	#45	5,190	□
v ₂₀₃ (E)	34	#30	4,520	□
w ₂₀₁ (E)	24	#15	10,520	—

A & B DIMENSIONS

Bar	A	B
s ₂₀₁ (E)	1300	1520
s ₂₀₂ (E)	1300	260
s ₂₀₃ (E)	1300	1150
s ₂₀₄ (E)	1200	950
s ₂₀₅ (E)	1200	1160
s ₂₀₆ (E)	950	910
s ₂₀₇ (E)	950	1020
s ₂₀₈ (E)	1300	260
s ₂₀₉ (E)	320	1160
s ₂₁₁ (E)	600	1330
s ₂₁₂ (E)	600	760
u ₂₀₁ (E)	1300	640
u ₂₀₂ (E)	600	640

C, D & E DIMENSIONS

Bar	C	D	E
v ₂₀₁ (E)	4560	660	520
v ₂₀₂ (E)	4530	660	520
v ₂₀₃ (E)	4120	400	300

- Notes:
1. Work this Sheet with Sheet No. 72 & 73 of 91.
 2. All dimensions are in millimeters (mm) except as noted.

PILE DATA

Type: HP 360x108
Capacity: 650 kN (Driven to 975 kN Bearing)
Est. Length: 14.0 m
No. Req'd.: 48 (Includes 2 test piles)
Test Piles driven to 1460 kN

DESIGNED	DBT
CHECKED	BDL
DRAWN	CPM
CHECKED	DBT

ILLINOIS DEPARTMENT OF TRANSPORTATION
I-94 EAST BOUND / IL 394 SOUTH BOUND
PIER 2 SECTION & DETAILS
SB IL ROUTE 394 OVER THORN CREEK
F.A.P. 332 SECTION (02033.1 & 0312-708W) R-3
COOK COUNTY
STA. 440+704.350 STRUCTURE NO. 016-2800
DATE JUL 18, 2005
SCALE ---
HNTB

K:\1145
 L:\34562\CADD\B\SN_2800\cadd\CTR_19_2800\post\98234a_2800.dgn
 22-AUG-2005 09:45