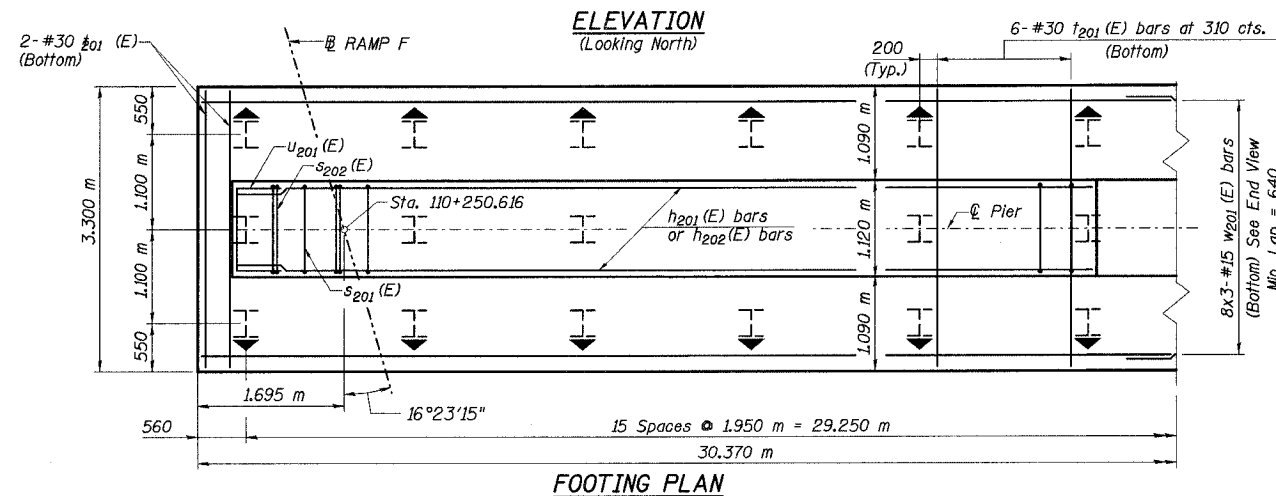
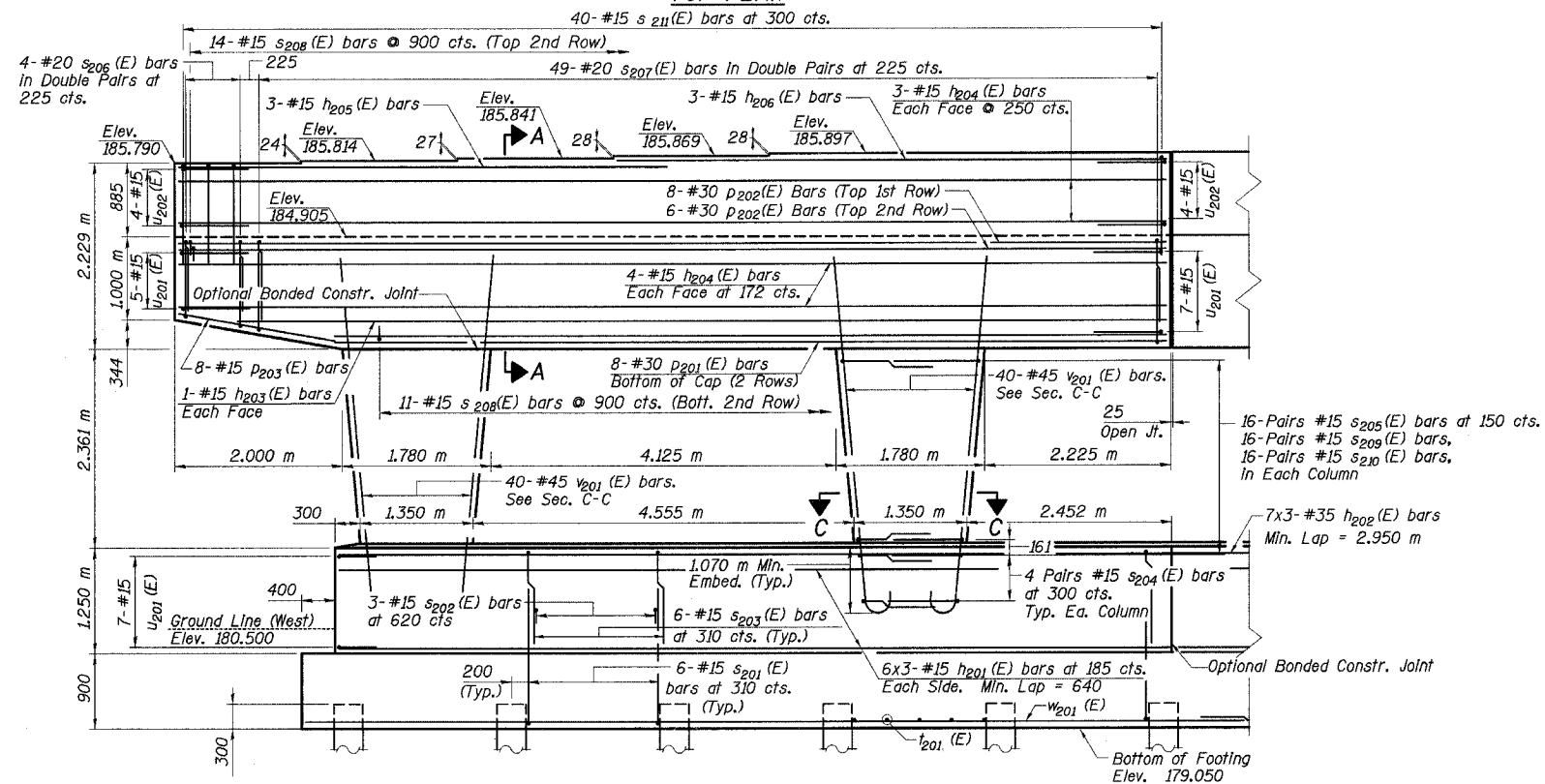
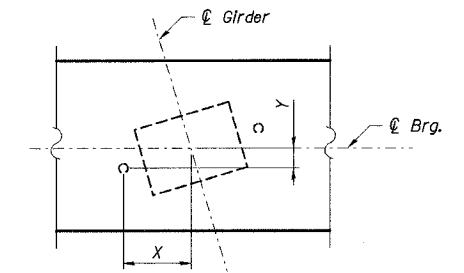
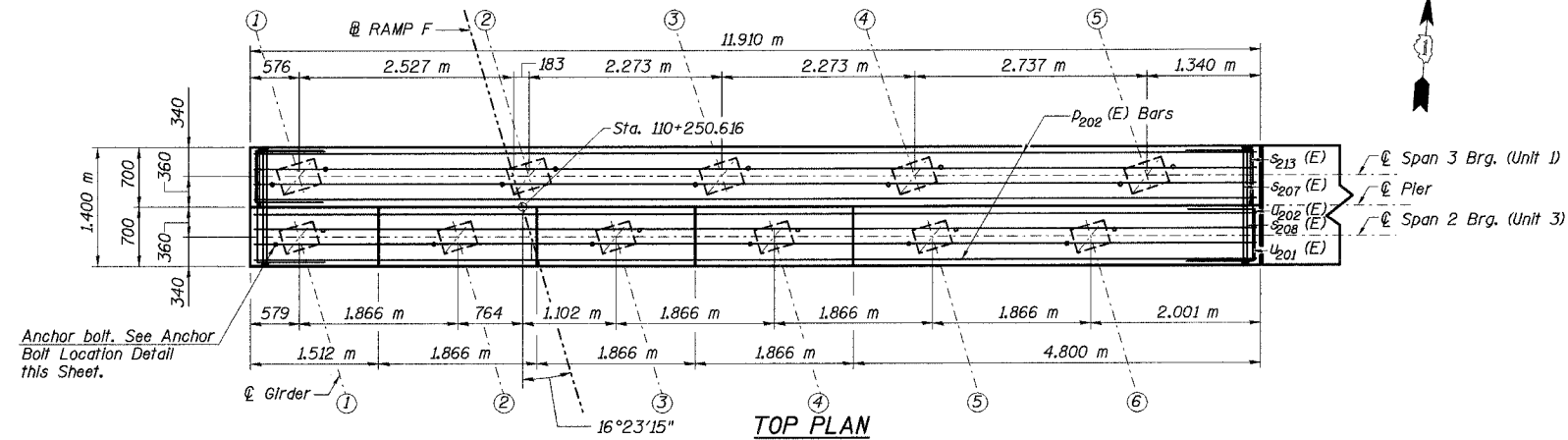


STATE OF ILLINOIS
DEPARTMENT OF TRANSPORTATION

ROUTE NO.	SECTION	COUNTY	TOTAL SHEETS	SHEET NO.	SHEET NO. 72 91 SHEETS
F. A. I. 80/94	*	COOK	870	586	
FED. ROAD DIST. NO. 1		ILLINOIS	FED. AID PROJECT-		
02033.1 & 0312-708W		R-3	CONTRACT NO. 62108		



ANCHOR BOLT LOCATION DETAILS

Gir.	Span 2 Brg.		Span 3 Brg.	
	X	Y	Gir.	Y
1	279	82	1	314
2	279	82	2	314
3	279	82	3	312
4	279	82	4	311
5	279	82	5	311
6	279	82	-	-

Notes:

1. Work this sheet with No. 73, & 74 of 91.
2. Space reinforcement in cap to miss anchor bolts.
3. Pour steps monolithically with cap.
4. All dimensions are in millimeters (mm) except as noted.
5. Reinforcement Bars designated (E) shall be epoxy coated.
6. For Bill of Materials and bar bending diagrams, See Sheet No. 74 of 91 Sheets.
7. Bars indicated thus "11x3-#15 cts." indicates 11 lines of bars with 3 lengths per line.
8. For bearing orientation, see Sheet No. 59 of 91.

↑ Indicates Battered Pile

ILLINOIS DEPARTMENT OF TRANSPORTATION
I-94 EAST BOUND / IL 394 SOUTH BOUND
PIER 2 PLAN & ELEVATION (WEST)

SB IL ROUTE 394 OVER THORN CREEK
F.A.P. 332 SECTION (02033.1 & 0312-708W) R-3
COOK COUNTY
STA. 440+704.350 STRUCTURE NO. 016-2800

DATE JUL 18, 2005
SCALE ---

HNTB

L:\k11111\11\34562\CADD\B1\SN_2800\cda\CTR_19_2800\p1\90214a_2800.dgn
22-AUG-2005 09:43

DESIGNED	DBT
CHECKED	BDL
DRAWN	CAB
CHECKED	DBT