

STATE OF ILLINOIS
DEPARTMENT OF TRANSPORTATION

ROUTE NO.	SECTION	COUNTY	TOTAL SHEETS	SHEET NO.	SHEET NO. 71
F. A. I. 80/94		COOK	870	585	91 SHEETS
FED. ROAD DIST. NO. 1		ILLINOIS FED. AID PROJECT-			
(02033.1 & 0312-708W) R-3		CONTRACT NO. 62108			

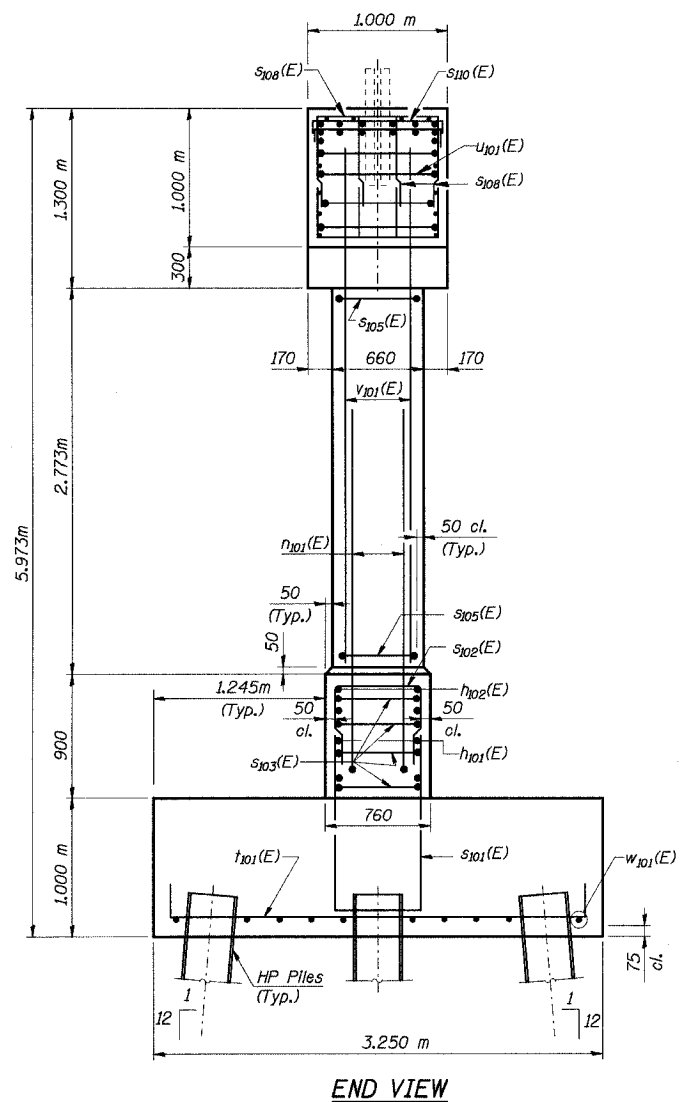
BILL OF MATERIAL

Bar	No.	Size	Length (m)	Shape
$\eta_{101}(E)$	6	#15	11.040	—
$\eta_{102}(E)$	5	#25	11.040	—
$\eta_{103}(E)$	2	#15	14.450	—
$\eta_{104}(E)$	6	#15	14.900	—
$\eta_{105}(E)$	2	#15	8.000	—
$\eta_{106}(E)$	16	#15	2.750	—
$\eta_{107}(E)$	8	#15	1.900	—
$\eta_{101}(E)$	72	#30	3.000	—
$\rho_{101}(E)$	7	#30	11.000	—
$\rho_{102}(E)$	14	#15	3.820	—
$\rho_{103}(E)$	14	#30	14.950	—
$s_{101}(E)$	56	#15	3.960	—
$s_{102}(E)$	41	#15	2.260	—
$s_{103}(E)$	8	#15	2.05	—
$s_{104}(E)$	18	#15	2.310	—
$s_{105}(E)$	60	#15	2.800	—
$s_{106}(E)$	60	#15	1.000	—
$s_{107}(E)$	56	#15	2.460	—
$s_{108}(E)$	176	#15	2.720	—
$s_{109}(E)$	44	#15	2.780	—
$s_{110}(E)$	32	#15	1.420	—
$v_{101}(E)$	58	#30	4.150	—
$u_{101}(E)$	10	#15	2.370	—
$v_{101}(E)$	72	#30	3.880	—
$w_{101}(E)$	10	#15	16.490	—
ITEM	UNIT	QUANTITY		
Structure Excavation	m ³	95.0		
Concrete Structures	m ³	90.9		
Reinforcement Bars, Epoxy Coated	kg	8800		
Furnishing Steel Piles HP 360x108	m	309		
Driving Steel Piles	m	309		
Test Pile Steel HP 360x108	Each	1		
Controlled Low Strength Material	m ³	2.8		

Reinforcement bars designated (E) shall be epoxy coated.

Notes:

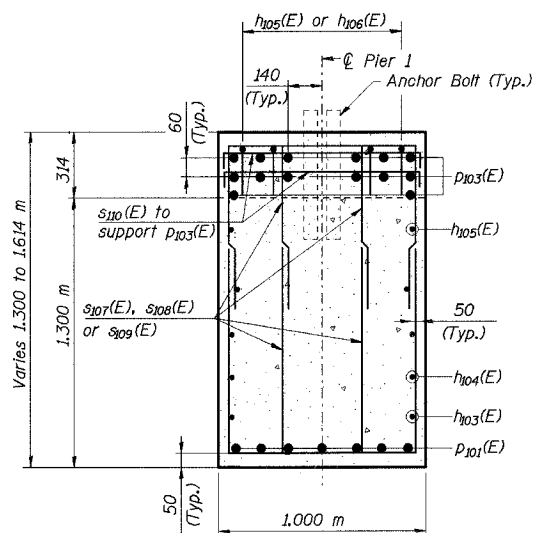
1. Work this Sheet with Sheet No. 70 of 91.
2. All dimensions are in millimeters (mm) except as noted.



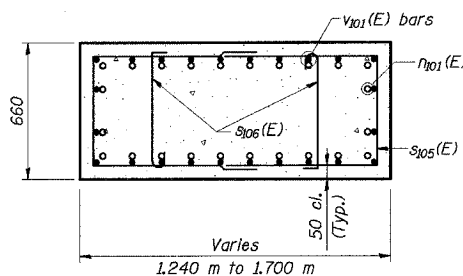
PILE DATA

Type: HP 360x108
Capacity: 650 kN (Driven to 975 kN Bearing)
Est. Length: 11.90 m
No. Req'd.: 27 (Includes 1 test pile)
Test Pile driven to 1460N

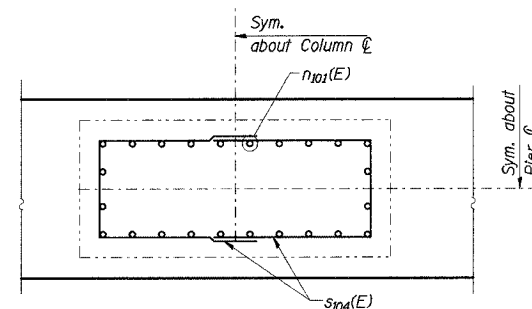
DESIGNED	MAS
CHECKED	JFA
DRAWN	LK
CHECKED	JFA



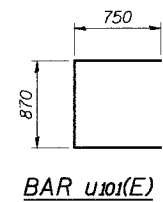
SECTION A-A



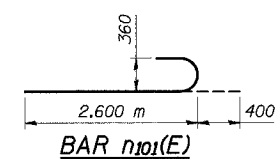
SECTION B-B



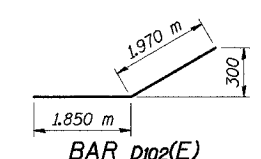
SECTION C-C



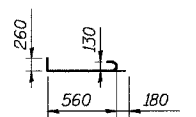
BAR $u_{101}(E)$



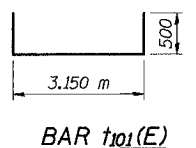
BAR $\rho_{101}(E)$



BAR $\rho_{102}(E)$



BAR $s_{106}(E)$



BAR $t_{101}(E)$

BARS $s_{101}(E)$, $s_{102}(E)$, $s_{103}(E)$, $s_{104}(E)$, $s_{105}(E)$, $s_{107}(E)$, $s_{108}(E)$, $s_{109}(E)$ & $s_{110}(E)$

A & B DIMENSIONS

Bar	A	B
$s_{101}(E)$	0.66	1.65
$s_{102}(E)$	0.66	0.80
$s_{103}(E)$	0.63	0.71
$s_{104}(E)$	0.53	0.89
$s_{105}(E)$	0.56	1.12
$s_{107}(E)$	0.62	0.92
$s_{108}(E)$	0.62	1.05
$s_{109}(E)$	0.62	1.08
$s_{110}(E)$	0.90	0.26

ILLINOIS DEPARTMENT OF TRANSPORTATION
I-94 EAST BOUND / IL 394 SOUTH BOUND
PIER 1
SECTIONS & DETAILS
SB IL ROUTE 394 OVER THORN CREEK
F.A.P. 332 SECTION (02033.1 & 0312-708W) R-3
COOK COUNTY
STA. 440+704.350 STRUCTURE NO. 016-2800
DATE JUL 18, 2005
SCALE ---
HNTB

L:\k110\134562\CAUD\B1\SM_2800\cads\CTR_19_2800\p19124a_2800.dgn
18-AUG-2005 08:24