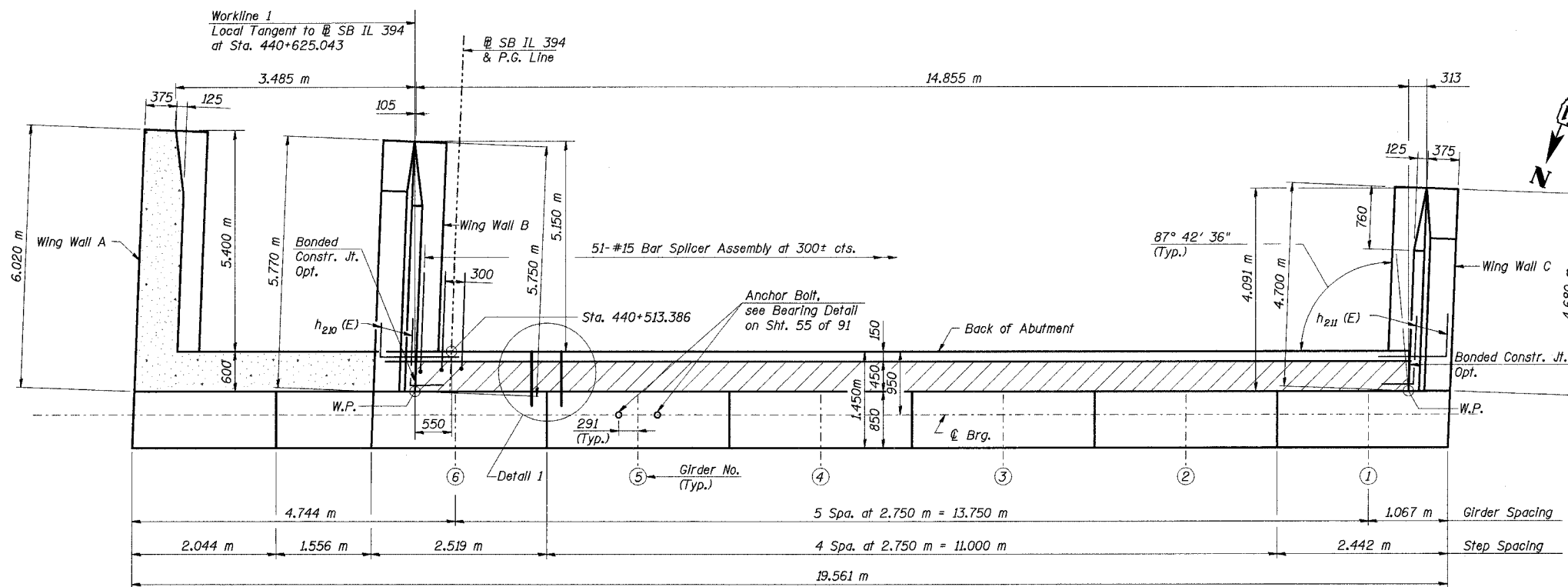
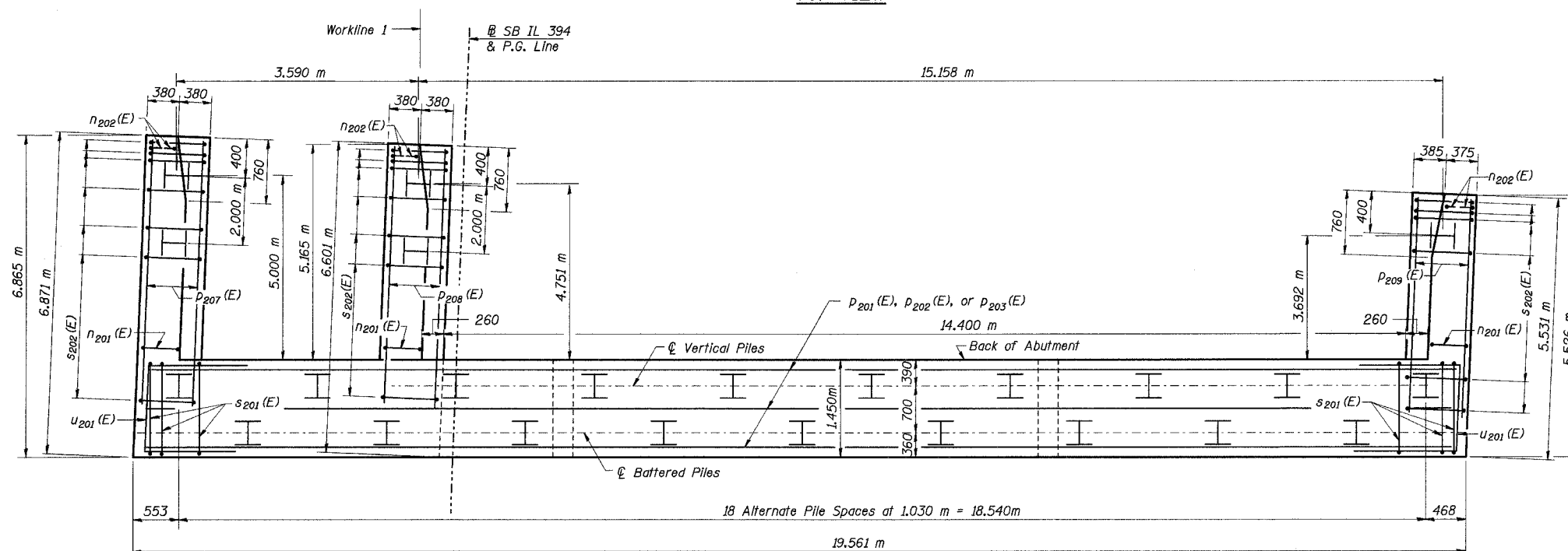


STATE OF ILLINOIS  
DEPARTMENT OF TRANSPORTATION

ROUTE NO.	SECTION	COUNTY	TOTAL SHEETS	SHEET NO.	SHEET NO. 61
F. A. I. 80/94	*	COOK	870	575	91 SHEETS
FED. ROAD DIST. NO. 1	ILLINOIS	FED. AID PROJECT-			
(0203.1 & 0312-708W) R-3			CONTRACT NO. 62108		



TOP VIEW



PLAN-PILE CAP

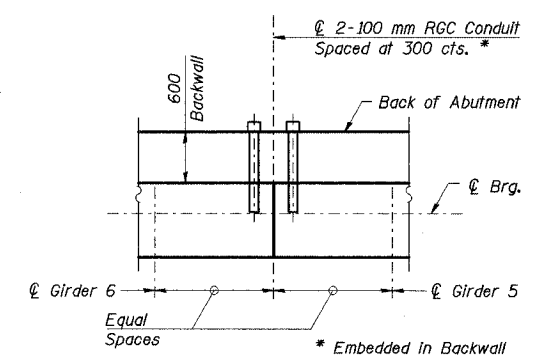
PILE DATA

Type: HP 360 x 108  
Capacity: 650 kN (Driven to 975 kN)  
Est. Length: 18.4 m (East)  
17.7 m (West)  
No. Required 24 (Includes 1 Test Pile)  
Test Piles driven to 1460 kN

DESIGNED	TRL
CHECKED	MEA
DRAWN	LK
CHECKED	MEA



- Notes:
1. Work this sheet with Sheets 62, 63, and 67 of 91.
  2. Reinforcement bars designated (E) shall be epoxy coated.
  3. All dimensions are in millimeters (mm) except as noted.
  4. Min. bar laps (Unless otherwise shown):  
#15 bars - 710  
#20 bars - 890  
#25 bars - 1480
  5. For Anchor Bolt Installation Details See Sheet 60 of 91.
  6. See Sheet 63 of 91 for placement of dowel bars.
  7. All piles shall be encased in concrete. See Detail on Sheet 67 of 91.



ILLINOIS DEPARTMENT OF TRANSPORTATION  
I-94 EAST BOUND / IL 394 SOUTH BOUND  
SOUTH ABUTMENT PLAN

SB IL ROUTE 394 OVER THORN CREEK  
F.A.P. 332 SECTION (0203.1 & 0312-708W) R-3  
COOK COUNTY  
STA. 440+704.350 STRUCTURE NO. 016-2800

DATE JUL 18, 2005  
SCALE ---

**HNTB**

J:\Beauchamp\JA\34552\CADD\B\SN\_2800\CADD\CTR\_1\9\_2800\ab\90024\_2800.dgn  
08-SEP-2005 13:48