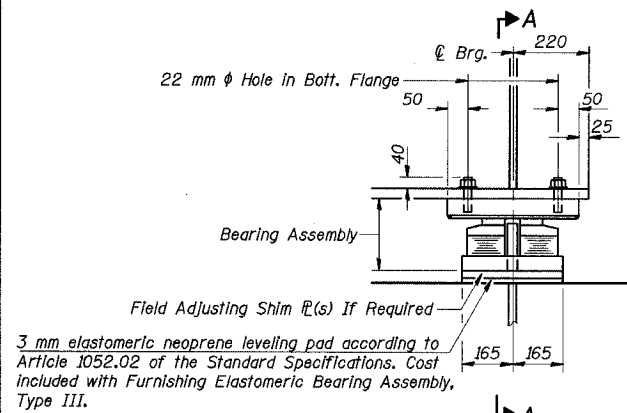
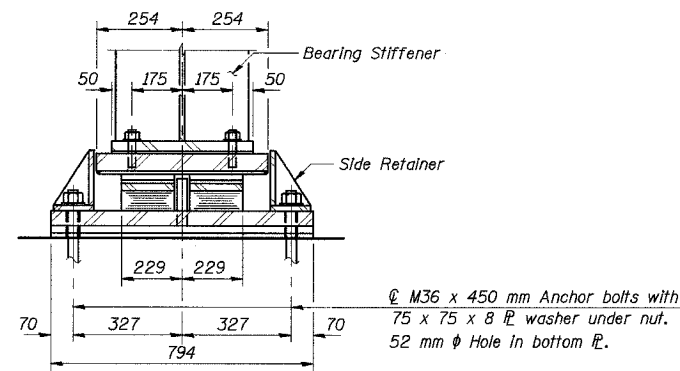


STATE OF ILLINOIS  
DEPARTMENT OF TRANSPORTATION

ROUTE NO.	SECTION	COUNTY	TOTAL SHEETS	SHEET NO.	SHEET NO. 56
F. A. I. 80/94		COOK	870	570	91 SHEETS
FED. ROAD DIST. NO. 1		ILLINOIS	FED. AID PROJECT-		
(0203.1 & 0312-708W) R-3			CONTRACT NO. 62108		



**ELEVATION AT N. ABUT.**  
(Looking West)

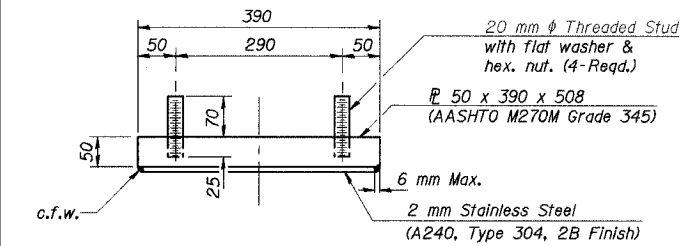


**SECTION A-A**

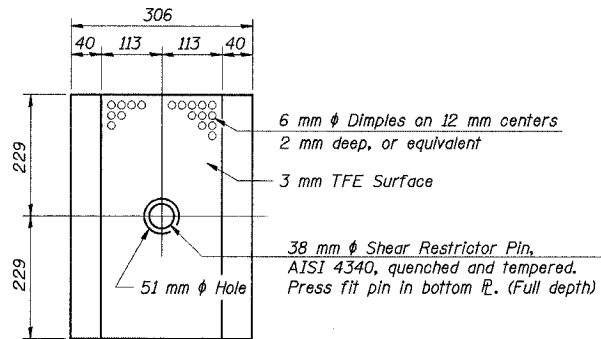
**TYPE III ELASTOMERIC EXP. BRG.**  
(N. Abut.)

Notes: See sheet No. 60 of 91 for Anchor Bolt installation.  
All dimensions are in millimeters (mm) except as noted.

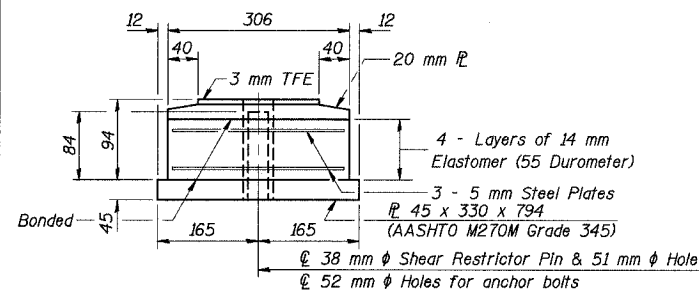
3 mm elastomeric neoprene leveling pad according to Article 1052.02 of the Standard Specifications. Cost included with Furnishing Elastomeric Bearing Assembly, Type III.



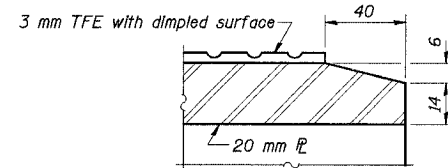
**TOP BEARING ASSEMBLY**



**PLAN-TFE ELASTOMERIC BRG.**

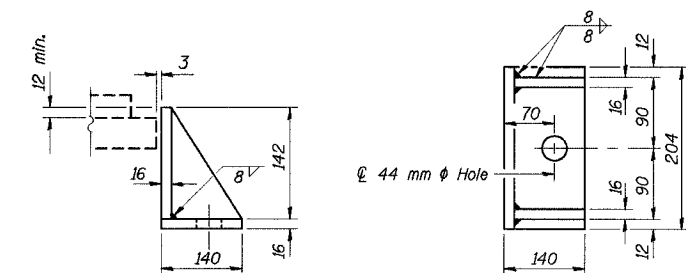


**BOTTOM BEARING ASSEMBLY**



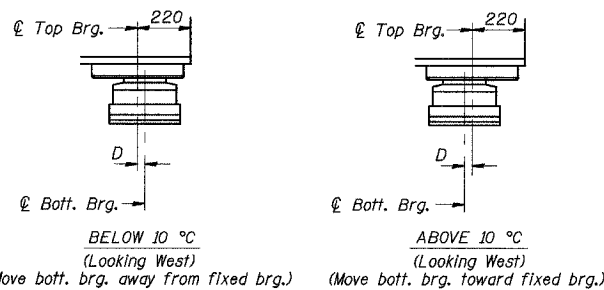
**SECTION THRU TFE**

Notes: The 3 mm TFE sheet shall be bonded directly to the top steel plate with a two-component, medium viscosity epoxy resin, conforming to the requirements of the Federal Specification MMM-A-134, Type I. The bond agent shall be applied on the full area of the contact surfaces. Bonding of 3 mm TFE sheet during vulcanizing process will be permitted provided the process and method of adjusting assembly height is approved by the Engineer.  
All dimensions are in millimeters (mm) except as noted.



**SIDE RETAINER**

Equivalent rolled angle with stiffeners will be allowed in lieu of welded plates. Mass included with Erecting Structural Steel.



**TYPE III ELASTOMERIC EXP. BRG. LOCATIONS**

Unit	Location	No. of Brgs. Req'd
1	N. Abut.	9

**SETTING ANCHOR BOLTS AT EXP. BRG.**

D = 1 mm per each 10 m of expansion for every 8 °C temp. change from the normal temp. of 10 °C.

**BILL OF MATERIAL**

Item	Unit	Quantity
Erecting Elastomeric Bearing Assembly, Type III	Each	9

DESIGNED	TRL
CHECKED	JJK
DRAWN	LK
CHECKED	JJK

J:\Benchtop\EA\34562\CAD\15\SN\_2800\cda\CTR\_19\_2800\br-190044a\_2800.dgn 08-JUL-2005 13:48

ILLINOIS DEPARTMENT OF TRANSPORTATION  
I-94 EAST BOUND / IL 394 SOUTH BOUND  
**ELASTOMERIC EXPANSION BEARINGS TYPE III**  
SB IL ROUTE 394 OVER THORN CREEK  
F.A.P. 332 SECTION (02033.1 & 0312-708W) R-3  
COOK COUNTY  
STA. 440+704.350 STRUCTURE NO. 016-2800  
DATE JUL 18, 2005  
SCALE ---  
**HNTB**