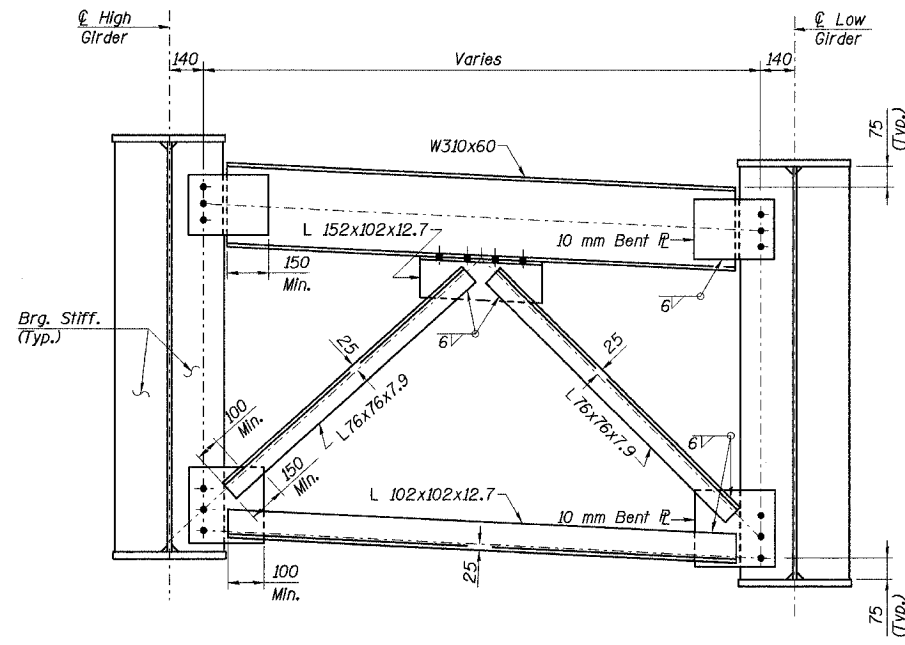
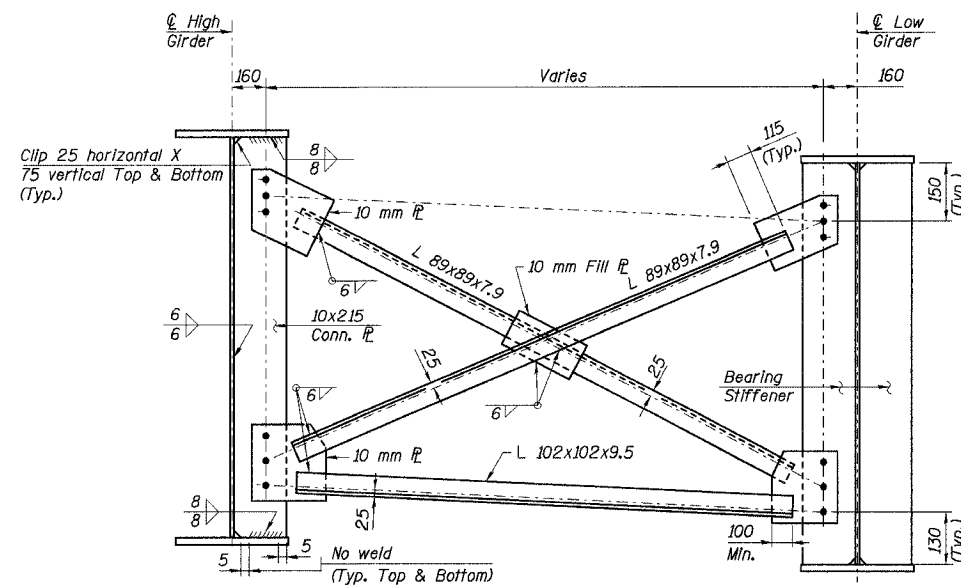


STATE OF ILLINOIS
DEPARTMENT OF TRANSPORTATION

ROUTE NO.	SECTION	COUNTY	TOTAL SHEETS	SHEET NO.	SHEET NO. 45 91 SHEETS
F. A. I. 80/34	.	COOK	870	559	
FED. ROAD DIST. NO. 1		ILLINOIS FED. AID PROJECT-		CONTRACT NO. 62108	
0203.1 & 0312-708W) R-3					



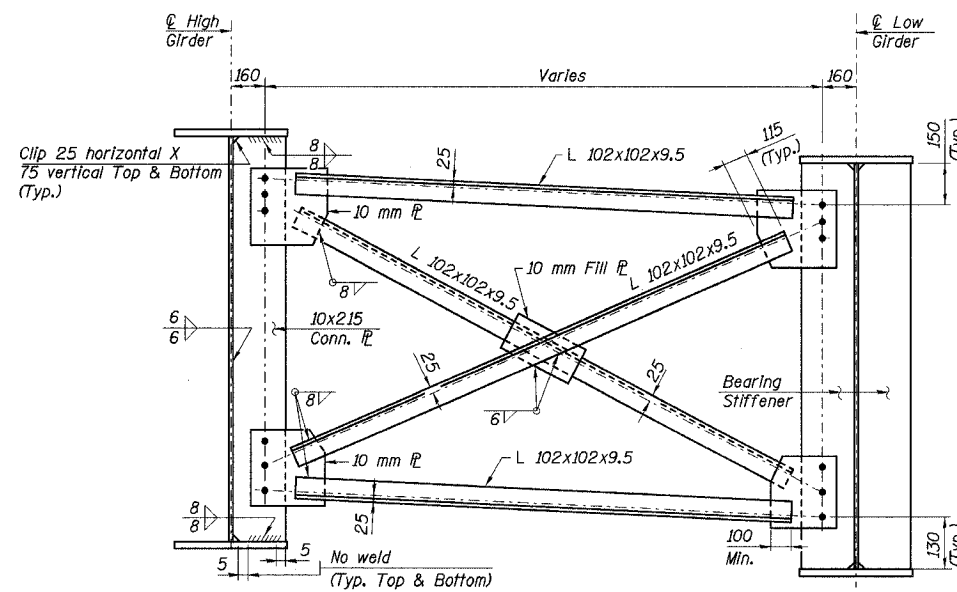
END CROSS FRAME D1
(All Materials AASHTO M270M Grade 345, N.T.R.)



AT CONNECTION PLATE **AT BEARING STIFFENER**

INTERIOR CROSS FRAME D2

(For Straight Girders)
(All Materials AASHTO M270M Grade 345, N.T.R. except Fill PL)



AT CONNECTION PLATE **AT BEARING STIFFENER**

INTERIOR CROSS FRAME D3

(For Curved Girders)
(All Material AASHTO M270M Grade 345, N.T.R. except Fill PL)

- Notes:
1. All dimensions are in millimeters (mm) except as noted.
 2. All cross frame connections to have 28 mm ϕ oversized holes for all M22 H.S. Bolts.
 3. Two hardened washers shall be required over each oversized hole.
 4. See Sheet No. 43 of 91 for bearing stiffener details.
 5. N.T.R. denotes members to which notch toughness requirements are applicable.

DESIGNED	JY
CHECKED	MEA
DRAWN	LK
CHECKED	MEA

J:\Beauchamp\ET\34562\CAD\1\1\SN-2800\oda\CTR_19_2800\1p19114.e_2800.dgn
 08-JUL-2005 13:48

ILLINOIS DEPARTMENT OF TRANSPORTATION
I-94 EAST BOUND / IL 394 SOUTH BOUND
CROSS FRAMING DETAILS
SPANS 3-5 - UNIT 1
SB IL ROUTE 394 OVER THORN CREEK
F.A.P. 332 SECTION (02033.1 & 0312-708W) R-3
COOK COUNTY
STA. 440+704.350 STRUCTURE NO. 016-2800
DATE JUL 18, 2005
SCALE ---

HNTB