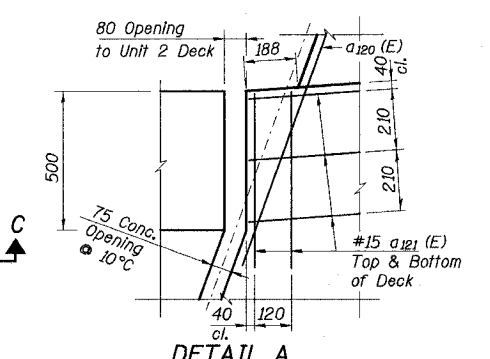
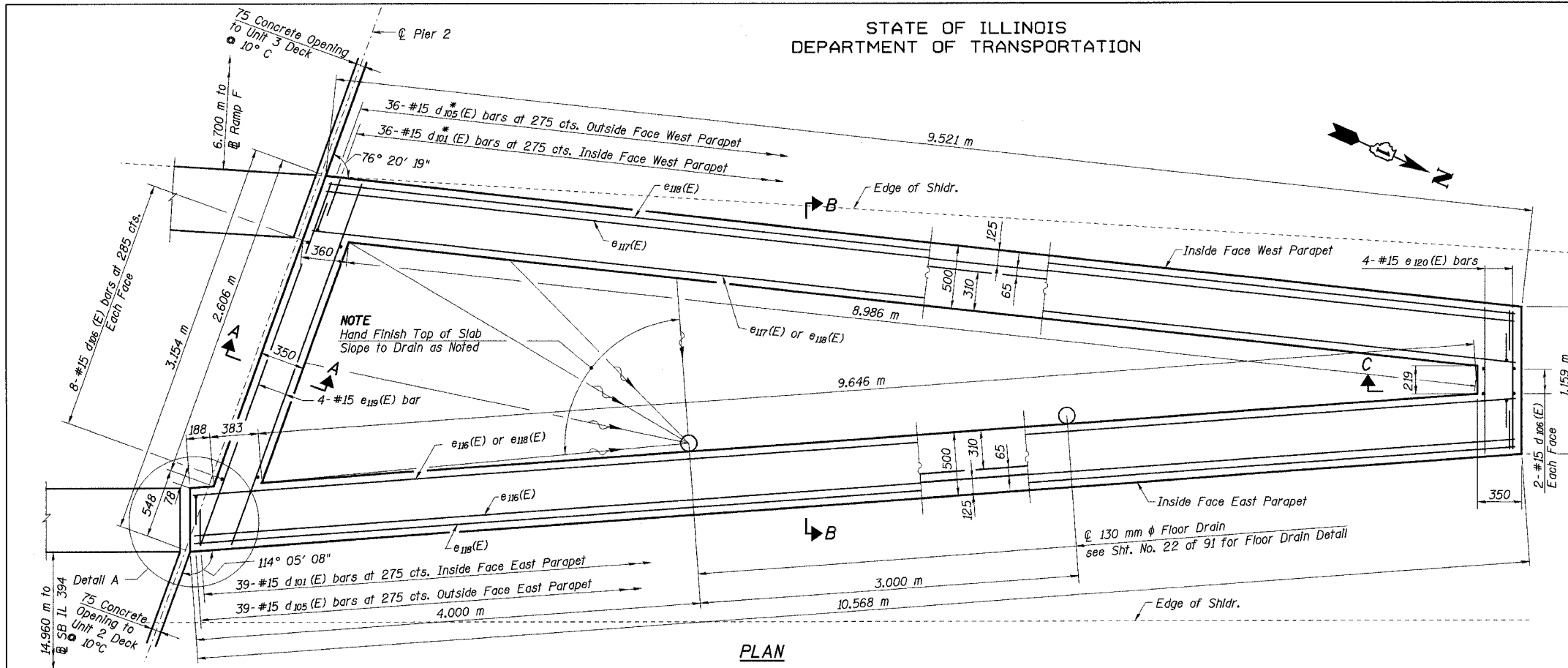


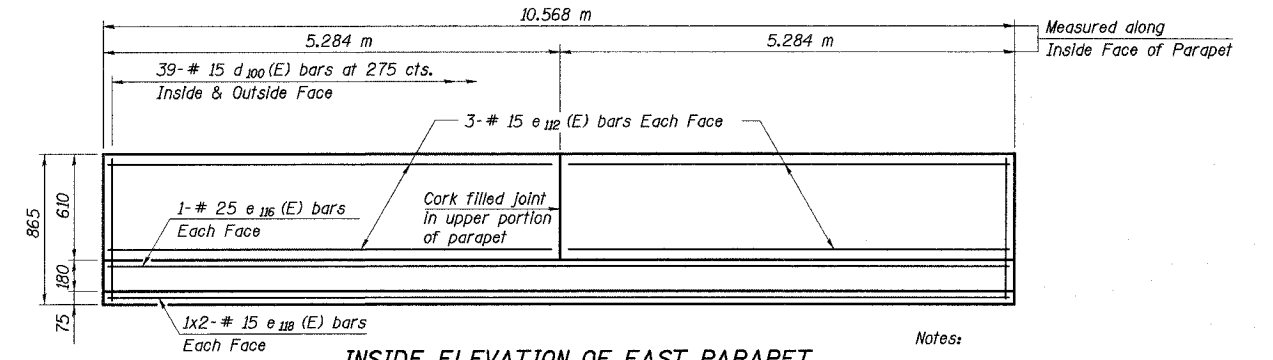
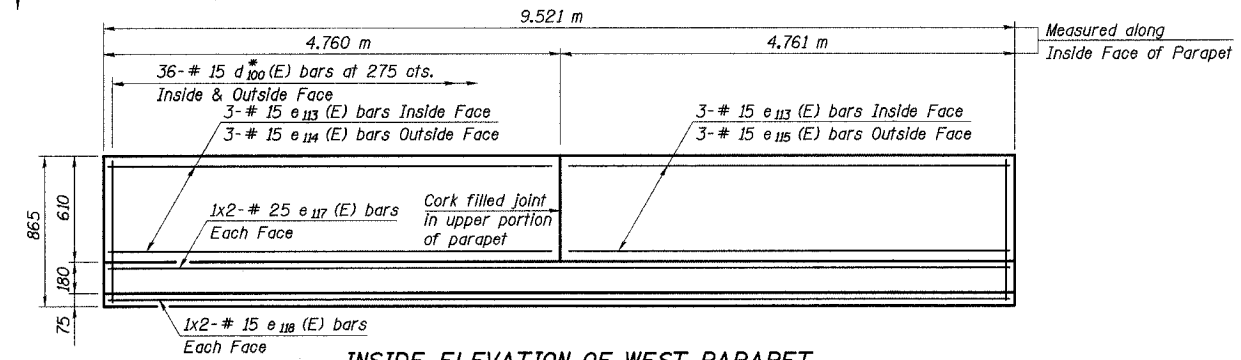
STATE OF ILLINOIS  
DEPARTMENT OF TRANSPORTATION

ROUTE NO.	SECTION	COUNTY	TOTAL SHEETS	SHEET NO.	SHEET NO. 29
F. A. I. 80/94	*	COOK	870	543	91 SHEETS
FED. ROAD DIST. NO. 1		ILLINOIS	FED. AID PROJECT-		
(0203.1 & 0312-708) R-3				CONTRACT NO. 62108	

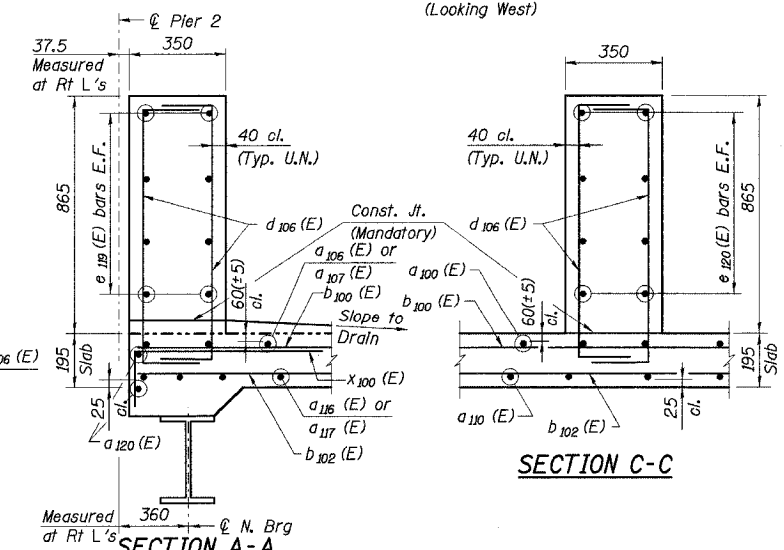
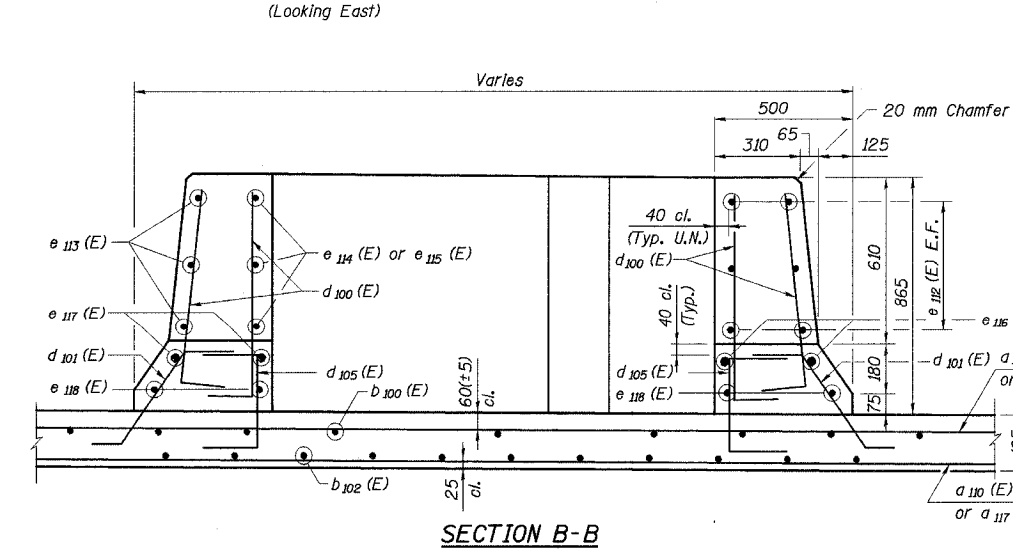


\* In west parapet, place d<sub>100</sub>(E), d<sub>101</sub>(E), d<sub>105</sub>(E) bars parallel to e<sub>119</sub>(E) bar at south end and e<sub>120</sub>(E) bar at north end, then place the remaining rebar transitionally perpendicular to parapet longitudinal direction.

PLAN



- Notes:
1. Work this sheet with Sht. No. 17, 20, 21 & 30 of 91.
  2. Bars indicated thus "1x2 - #15 etc" indicates 1 line of bars with 2 lengths per line.
  3. Min. Lap Splice Length for Gore Parapet: #15 - 640 #20 - 790
  4. Reinforcement bars designated (E) shall be epoxy coated.
  5. All dimensions are in millimeters (mm) except as noted.
  6. See Plan view for top of slab finish requirements.



DESIGNED	JY
CHECKED	MAS
DRAWN	LK
CHECKED	MAS

J:\Beauchamp\JA\34562\CADD\B\1\N\_2800\cads\CTR\_19\_2800\au10114s\_2800.dgn  
08-SEP-2005 13:46

ILLINOIS DEPARTMENT OF TRANSPORTATION  
I-94 EAST BOUND / IL 394 SOUTH BOUND  
GORE DETAILS

SB IL ROUTE 394 / RAMP F OVER THORN CREEK  
F.A.P. 332 SECTION (0203.1 & 0312-708) R-3  
COOK COUNTY  
STA. 440+704.350 STRUCTURE NO. 016-2800/2845  
DATE JUL 18, 2005  
SCALE ---

**HNTB**