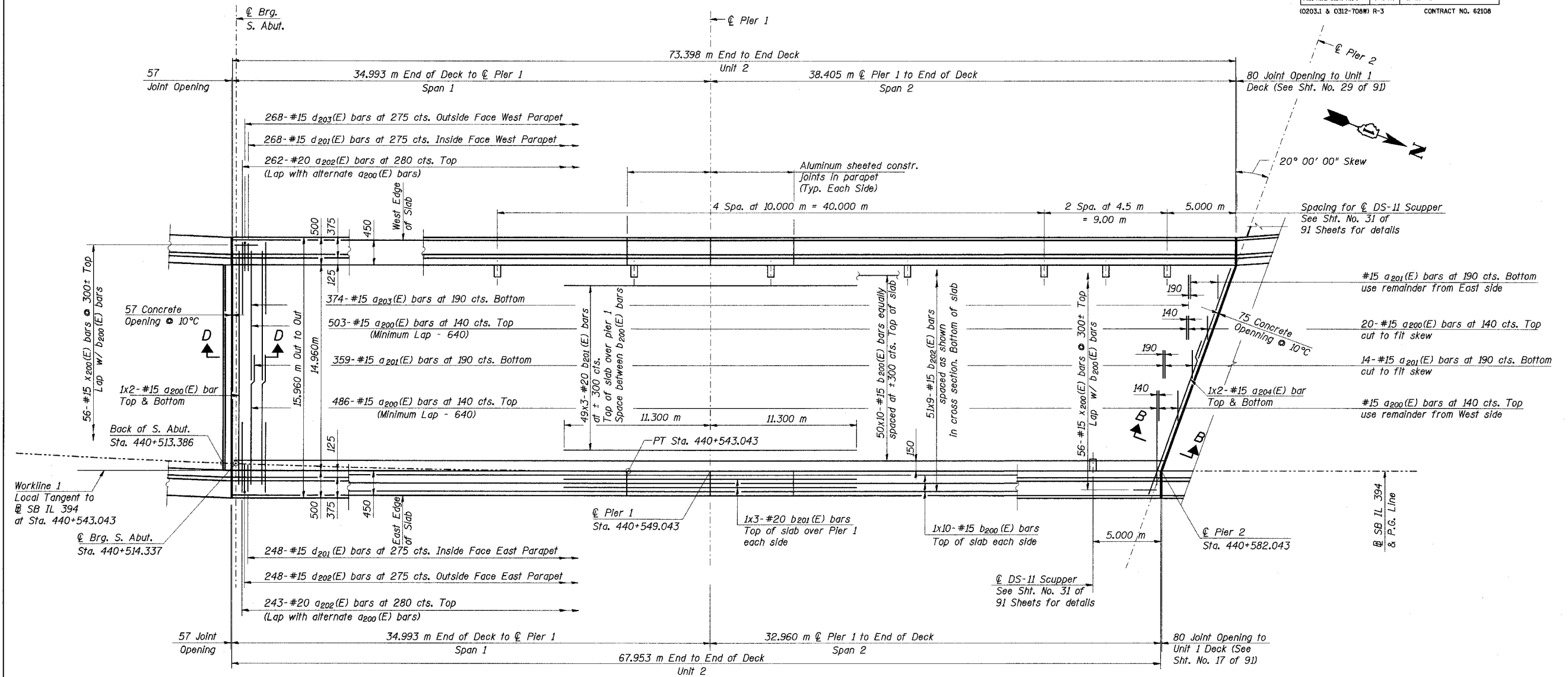


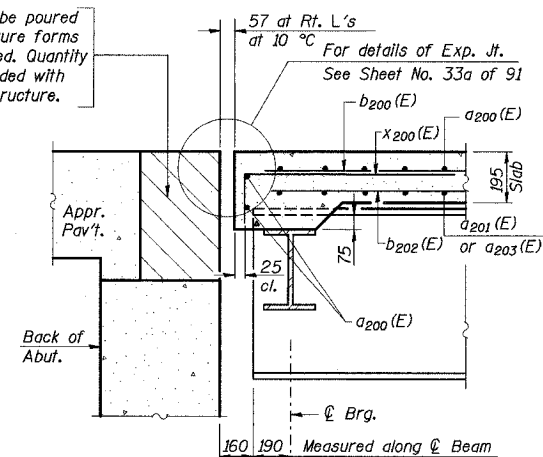
STATE OF ILLINOIS  
DEPARTMENT OF TRANSPORTATION

ROUTE NO.	SECTION	COUNTY	TOTAL SHEETS	SHEET NO.	SHEET NO. 23
F. A. I. 80/94	*	COOK	870	537	91 SHEETS
FED. ROAD DIST. NO. 1	ILLINOIS	FED. AID PROJECT-			
(02033.1 & 0312-708W) R-3		CONTRACT NO. 62108			



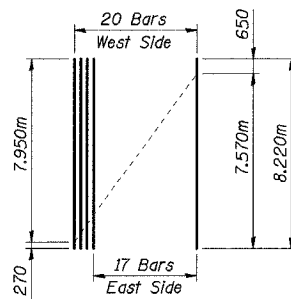
DECK PLAN - UNIT 2

Hatched area to be poured after superstructure forms have been removed. Quantity of concrete included with Concrete Superstructure.

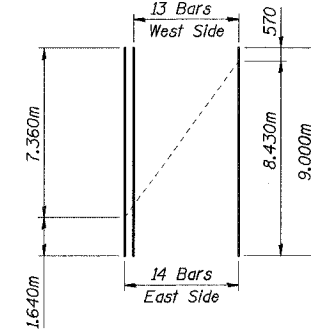


SECTION D-D

$a_{200}(E)$  BAR CUT DIAGRAM



$a_{201}(E)$  BAR CUT DIAGRAM



Notes:

1. Work this sheet with Sheet Numbers 24, 25, and 30 of 91.
2. Reinforcement bars designated (E) shall be epoxy coated.
3. Bars indicated thus "48 x 9 - #15 etc." indicates 48 lines of bars with 9 lengths per line.
4. Order  $a_{200}(E)$  &  $a_{201}(E)$  bars full length. Cut to fit skew and use remainder of bars at other side.
5. All dimensions are in millimeters (mm) except as noted.
6. Place bars  $d_{201}(E)$ ,  $d_{202}(E)$ ,  $d_{203}(E)$  to miss the Aluminum Sheeted Joint Location in Parapets.
7. For Section B-B see Sht. No. 17 of 91 Sheets.
8. Min. bar lap for deck reinforcement: (Unless otherwise shown)  
#15 - 510  
#20 - 640

DESIGNED	TRL
CHECKED	JY
DRAWN	LK
CHECKED	JY

ILLINOIS DEPARTMENT OF TRANSPORTATION  
I-94 EAST BOUND / IL 394 SOUTH BOUND  
DECK PLAN  
SPANS 1 & 2 - UNIT 2  
SB IL ROUTE 394 OVER THORN CREEK  
F.A.P. 332 SECTION (02033.1 & 0312-708W) R-3  
COOK COUNTY  
STA. 440+704.350 STRUCTURE NO. 016-2800  
DATE JUL 18, 2005  
SCALE ---

HNTB

L:\katie\JA\34852\GAD\N\SN\_2800\cds\CTR\_19\_2800\au\90214a\_2800.dgn  
18-AUG-2005 08:11