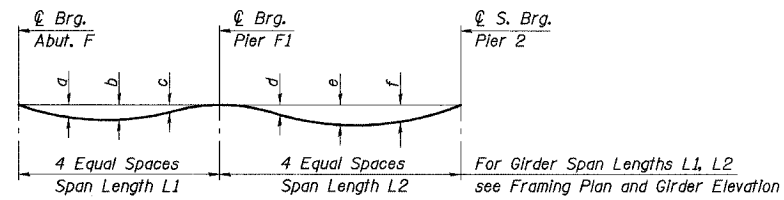


STATE OF ILLINOIS
DEPARTMENT OF TRANSPORTATION

ROUTE NO.	SECTION	COUNTY	TOTAL SHEETS	SHEET NO.	SHEET NO. 14 91 SHEETS
F. A. I. 80/94	.	COOK	870	528	
FED. ROAD DIST. NO. 1		ILLINOIS FED. AID PROJECT-		CONTRACT NO. 62108	
0203.1 & 0312-708W		R-3			



DEAD LOAD DEFLECTION DIAGRAM

(Includes weight of slab & parapet-no future wearing surface)

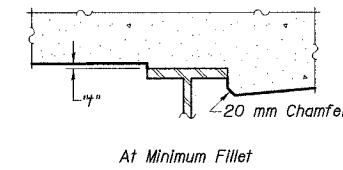
DEAD LOAD DEFLECTION TABLE

Girder No.	Deflection	Span F1 (L1)			Span F2 (L2)		
		a	b	c	d	e	f
1		10	11	4	10	20	17
2		12	13	6	9	18	16
3		13	15	7	8	17	14
4		14	16	7	7	15	13
5		15	18	9	5	13	11
6		17	20	10	4	11	10

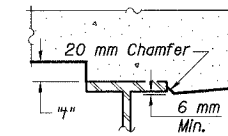
Note: The above deflections are not to be used in the field if the Engineer is working from the grade elevations adjusted for dead load deflections as shown in the "Top of Slab Elevations" tables. All offsets shown in the "Top of Slab Elevations" tables are in meters.

END OF SPAN DIMENSIONS
(Values in Meters)

Location	D1	D2
Girder 1	2.373	4.074
Girder 2	2.560	3.635
PGL & BL Ramp F	2.647	3.430
Girder 3	2.747	3.194
Girder 4	2.934	2.755
Girder 5	3.121	2.315
Girder 6	3.308	1.875



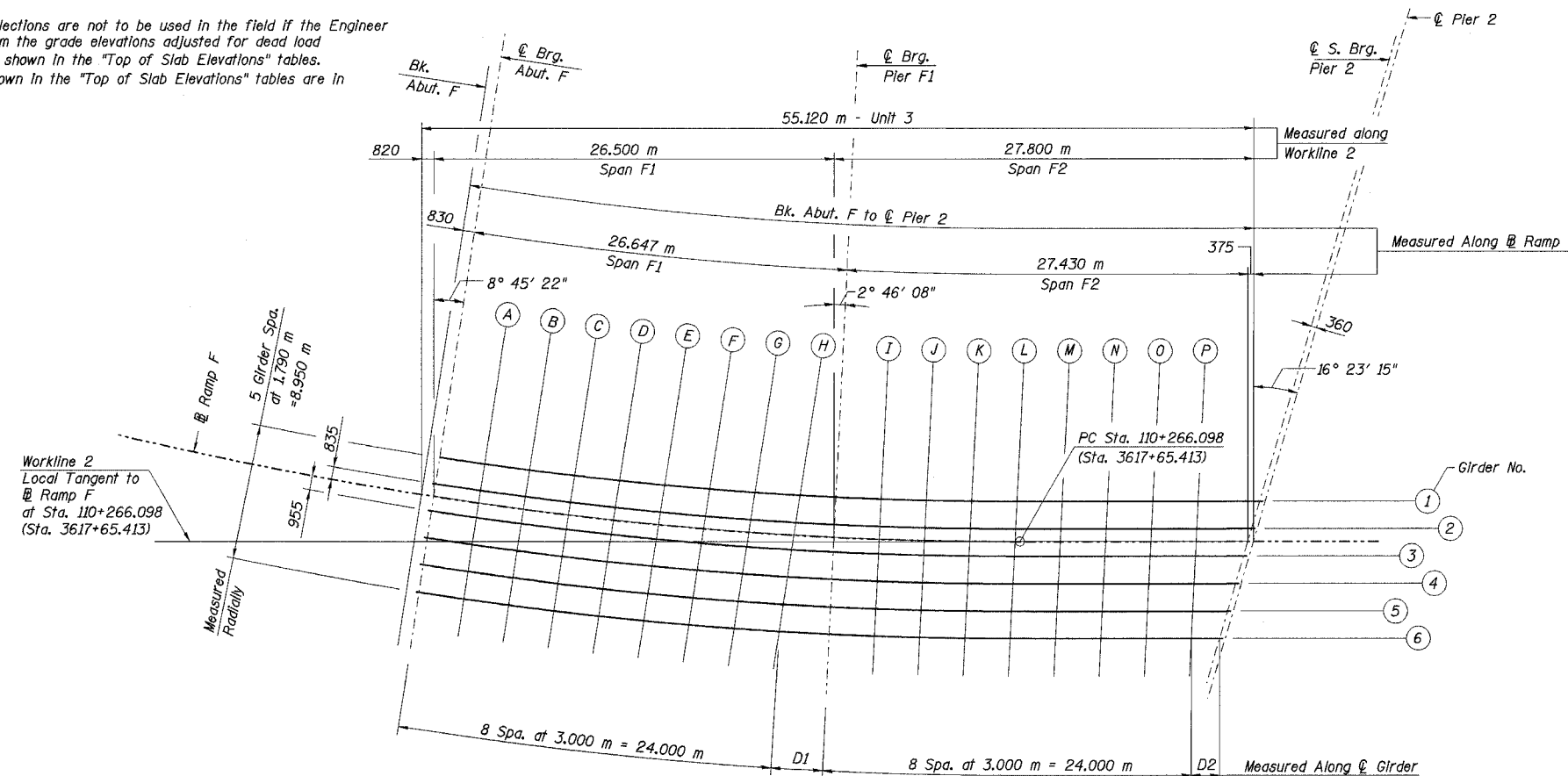
At Minimum Fillet



At Maximum Fillet

To determine "t": After all structural steel has been erected, elevations of the top flanges of the girders shall be taken at intervals shown in the elevation tables. These elevations subtracted from the "Theoretical Grade Elevations Adjusted for Dead Load Deflection" shown, minus slab thickness, equals the fillet heights "t" above top flange of girders.

FILLET HEIGHTS



- Notes:
1. Work this sheet with Sheet Nos. 15-16 of 91.
 2. All dimensions are in millimeters (mm) unless otherwise noted.
 3. Stations shown in parentheses are in English units.

DESIGNED	PJE
CHECKED	JJK
DRAWN	LK
CHECKED	JJK

ELEVATION GRID

ILLINOIS DEPARTMENT OF TRANSPORTATION
I-94 EAST BOUND / IL 394 SOUTH BOUND
TOP OF SLAB ELEVATIONS, GRID & DETAILS, SPANS F1 & F2 - UNIT 3
RAMP F OVER THORN CREEK
F.A.P. 332 SECTION (0203.1 & 0312-708W) R-3
COOK COUNTY
STA. 440+704.350 STRUCTURE NO. 016-2845
DATE JUL 18, 2005
SCALE ---

HNTB

J:\Beauchamp
E:\34562\CADD\B1\SN_2800\cda\CTR_19_2800\apl\903146_2800.dgn
08-JUL-2005 13:47