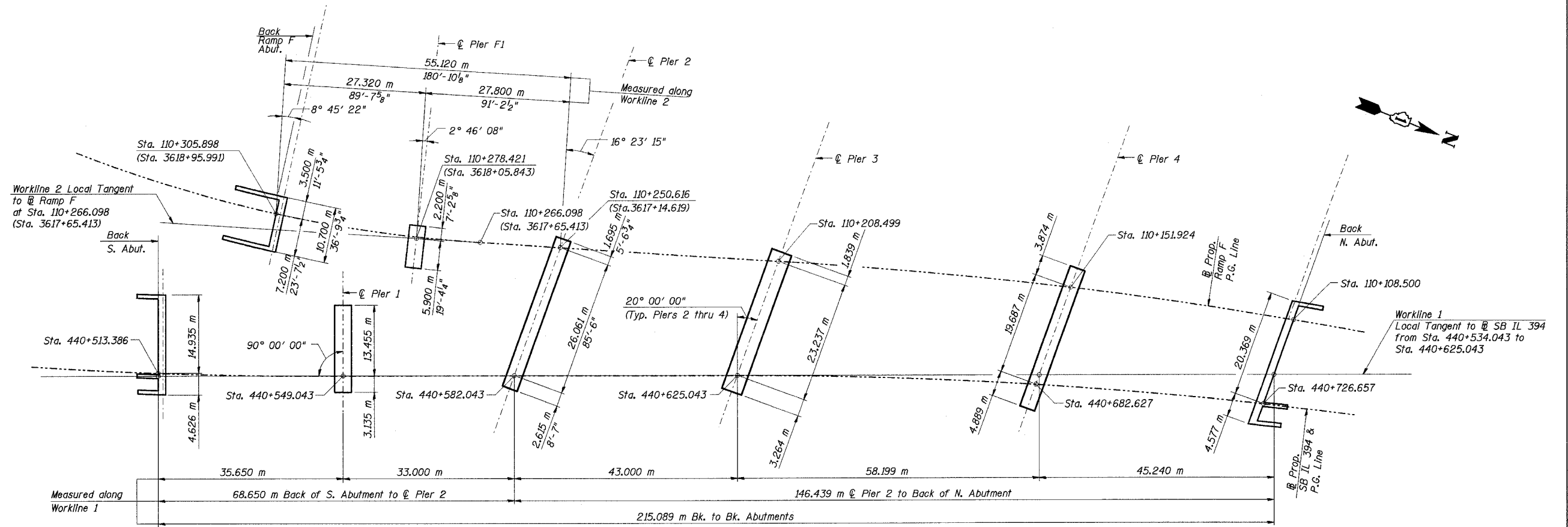


STATE OF ILLINOIS
DEPARTMENT OF TRANSPORTATION

ROUTE No.	SECTION	COUNTY	TOTAL SHEETS	SHEET NO.	SHEET NO. 4
F. A. I. 80/94	*	COOK	870	518	91 SHEETS
FED. ROAD DIST. NO. 1		ILLINOIS FND. AID PROJECT-		CONTRACT NO. 62108	
(0203.1 & 0312-708W) R-3					



FOOTING LAYOUT

Notes:

1. All dimensions are in millimeters (mm) except as noted.
2. Stations in parantheses are in English units.

L:\k1\24562\CADD\BNSN-2800\cadd\CTR_19_2800\1190014a_2800.dgn
 22-AUG-2005 09:40

DESIGNED	DBT
CHECKED	BDL
DRAWN	LK
CHECKED	DBT

ILLINOIS DEPARTMENT OF TRANSPORTATION
I-94 EAST BOUND / IL 394 SOUTH BOUND

FOOTING LAYOUT

SB IL ROUTE 394 / RAMP F OVER THORN CREEK
F.A.P. 332 SECTION (0203.1 & 0312-708W) R-3
COOK COUNTY
STA. 440+704.350 STRUCTURE NO. 016-2800/2845
DATE JUL 18, 2005
SCALE ---

HNTB