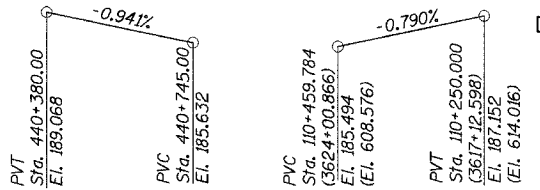


STATE OF ILLINOIS
DEPARTMENT OF TRANSPORTATION

ROUTE NO.	SECTION	COUNTY	TOTAL SHEETS	SHEET NO.	SHEET NO. 3
F. A. I. 80/94	*	COOK	870	517	91 SHEETS
FED. ROAD DIST. NO. 1		ILLINOIS FED. AID PROJECT-			
(0203.1 & 0312-708W) R-3		CONTRACT NO. 62108			

STATION 440+704.350
BUILT 200_ BY
STATE OF ILLINOIS
F.A.P. RT. 332 SEC. (0203.1 & 0312-708W) R-3
LOADING MS18
STR. NO. 016-2800

NAME PLATE
See Std. 515001



PROPOSED PROFILE GRADE SB IL 394
PROPOSED PROFILE GRADE @ RAMP F

CURVE DATA BL394SB-1

PI STA. = 440+282.451
Δ = 38° 53' 33.20"
D = 7° 09' 43"
R = 800.000 m
T = 282.451 m
L = 543.043 m
E = 48.398 m
PC STA. = 440+000.000
PT STA. = 440+543.043
S.E. = 5.40%
SE IN = Sta. 440+000 to 440+028
SE OUT = Sta. 440+506 to 440+601

CURVE DATA BL394SB-2

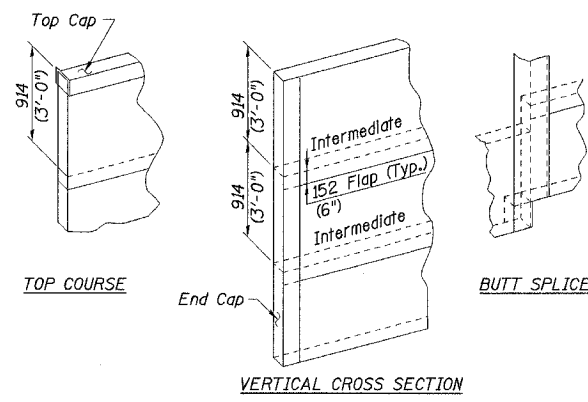
PI STA. = 440+806.211
Δ = 22° 09' 47.12"
D = 6° 11' 39"
R = 925.000 m
T = 181.168 m
L = 357.807 m
E = 17.575 m
PC STA. = 440+625.043
PT STA. = 440+982.850
S.E. = 5.10%
SE IN = Sta. 440+601 to 440+651
SE OUT = Sta. 440+961 to 441+095

CURVE DATA BLRAMPF-1

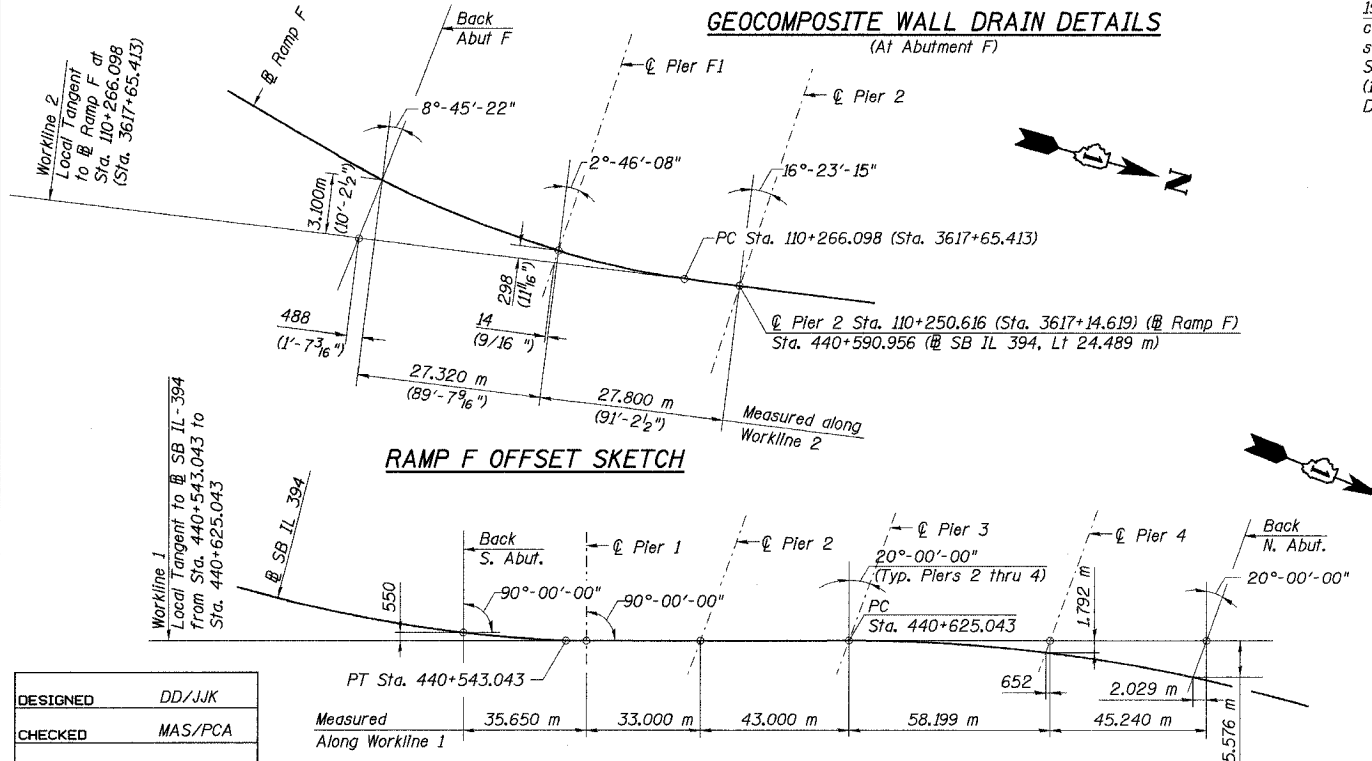
PI STA. = 110+103.471
Δ = 12° 36' 57.24"
D = 6° 07' 16"
R = 936.039 m
T = 103.471 m
L = 206.105 m
E = 5.702 m
PC STA. = 110+000.000
PT STA. = 110+206.105
S.E. = ---
SE IN = ---
SE OUT = ---

CURVE DATA BLRAMPF-2

PI STA. = 110+306.544 (3618+98.110)
Δ = 18° 01' 32.77"
D = 22° 28' 08"
R = 255.000 m (836.614')
T = 40.447 m (132.700')
L = 80.225 m (263.205')
E = 3.188 m (10.459')
PC STA. = 110+266.098 (3617+65.413)
PT STA. = 110+346.323 (3620+28.619)
S.E. = 6%
SE IN = Sta. --- to 110+286 (3618+30.709)
SE OUT = Sta. 110+710 to 110+766 (3632+21.785 to 3634+05.512)

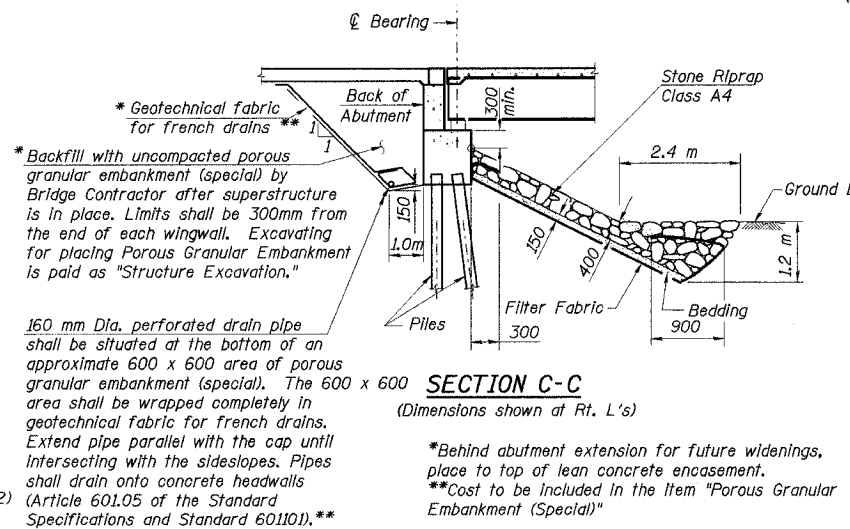


GEOCOMPOSITE WALL DRAIN DETAILS
(At Abutment F)



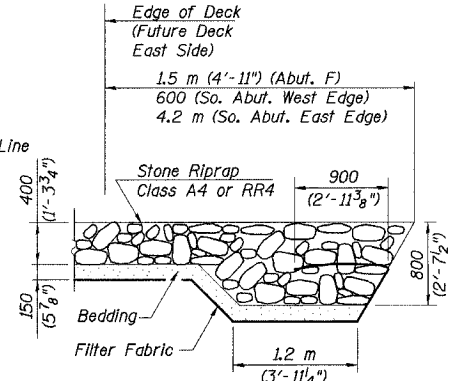
SB IL-394 OFFSET SKETCH

DESIGNED	DD/JJK
CHECKED	MAS/PCA
DRAWN	LK
CHECKED	PCA

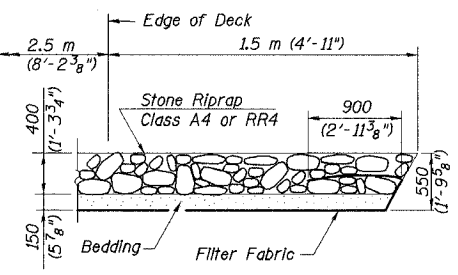


SECTION C-C
(Dimensions shown at Rt. L's)

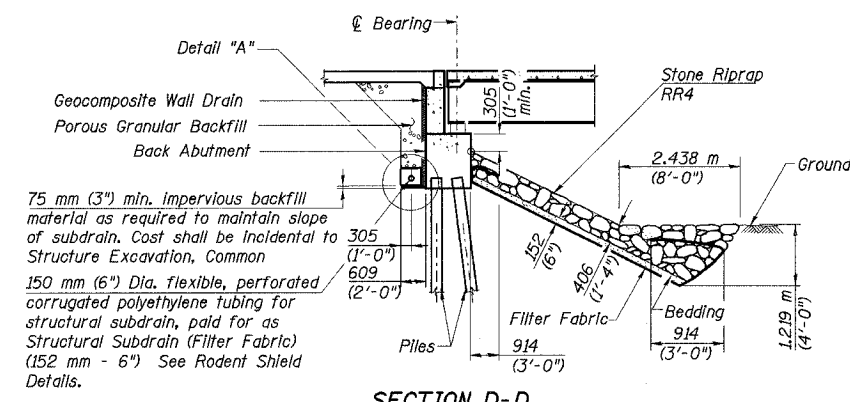
160 mm Dia. perforated drain pipe shall be situated at the bottom of an approximate 600 x 600 area of porous granular embankment (special). The 600 x 600 area shall be wrapped completely in geotechnical fabric for french drains. Extend pipe parallel with the cap until intersecting with the sideslopes. Pipes shall drain onto concrete headwalls (Article 601.05 of the Standard Specifications and Standard 601101). **



SECTION A-A
(Typ. So. Abut. and Abut. F)

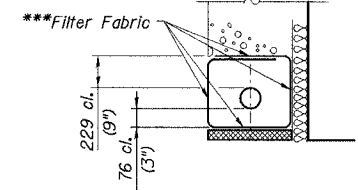


SECTION B-B
Length = 5m (16'-4 7/8")
Centered about @ Scupper

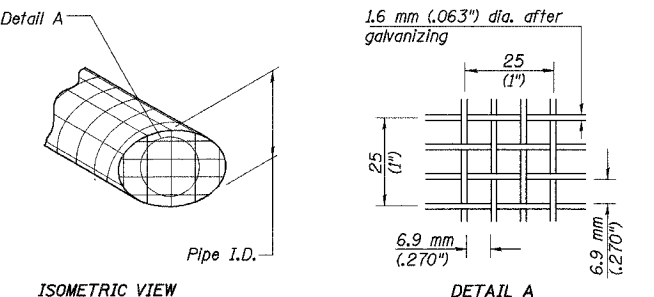


SECTION D-D
(Dimensions shown at Rt. L's)

***Filter Fabric for Structural Subdrains see Sub Section 1114.2 of the ISTHA Standard Specification. Cost incidental to "Porous Granular Backfill."



DETAIL A



RODENT SHIELD DETAILS
(At Abutment F)

- Notes:
- For locations of Sections A-A, B-B, C-C & D-D see Sht. No. 1 of 91.
 - All dimensions are in millimeters (mm) except as noted. Information in parenthesis are in English units.

ILLINOIS DEPARTMENT OF TRANSPORTATION
I-94 EAST BOUND / IL 394 SOUTH BOUND
OFFSET SKETCH, PROFILES, CURVED DATA & MISCELLANEOUS DETAILS
SB IL ROUTE 394 / RAMP F OVER THORN CREEK
F.A.P. 332 SECTION (0203.1 & 0312-708W) R-3
COOK COUNTY
STA. 440+704.350 STRUCTURE NO. 016-2800/2845
DATE JUL 18, 2005
SCALE ---

HNTB