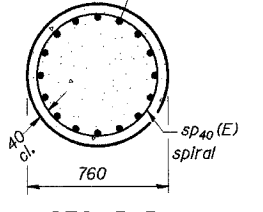
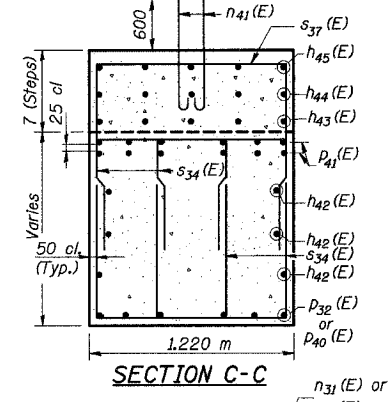
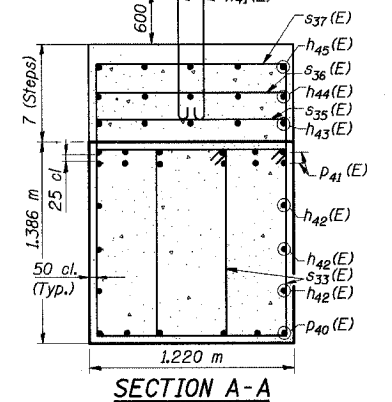
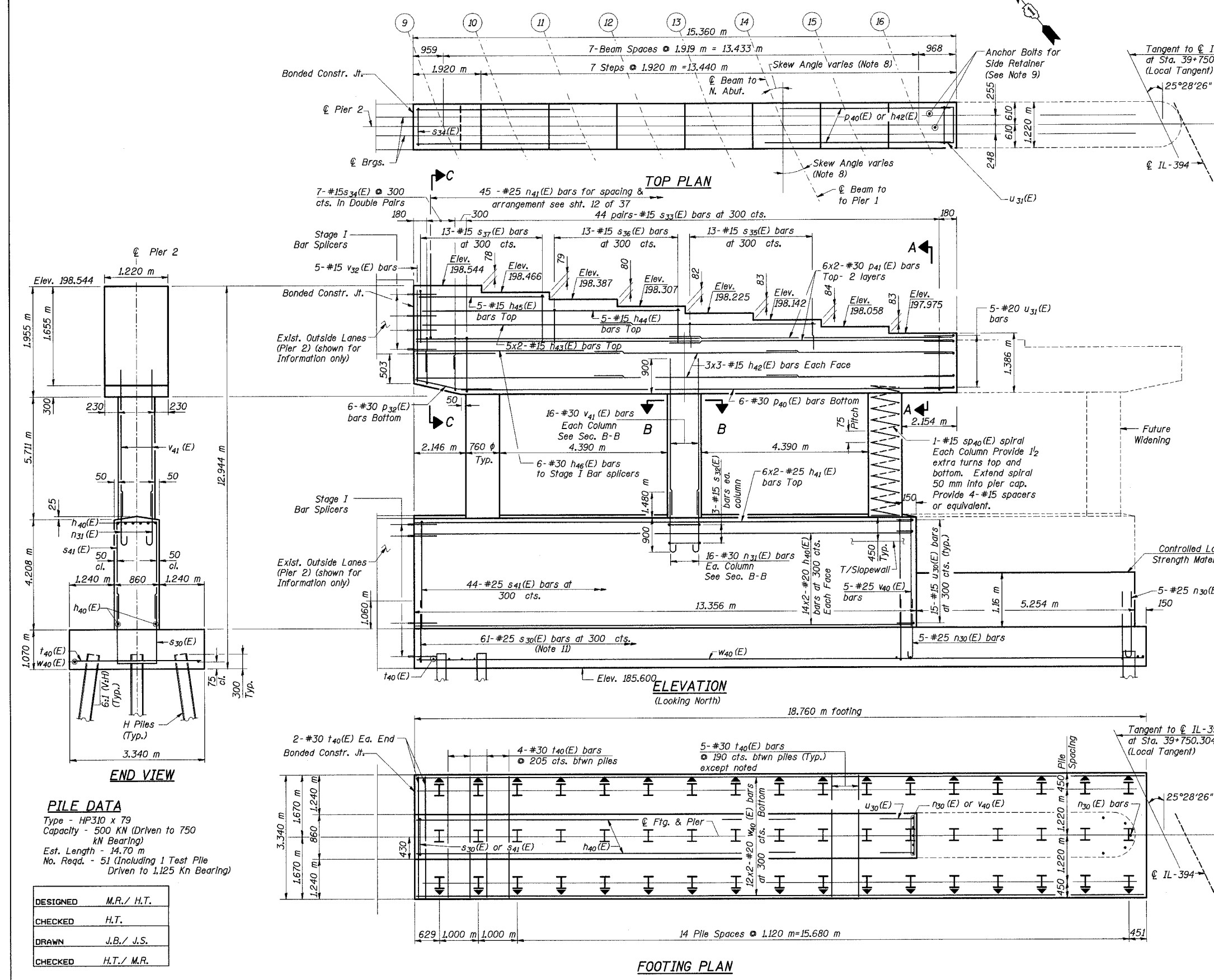


STATE OF ILLINOIS
DEPARTMENT OF TRANSPORTATION

ROUTE NO.	SECTION	COUNTY	TOTAL SHEETS	SHEET NO.	SHEET NO. 29
F.A.L. 80/94		COOK	870	502	37 SHEETS
ILLINOIS FED. AID PROJECT-					
SECTION 0203.1 & 0312-708(R) R-3 CONTRACT # 62108					



- NOTES:**
1. Work this sheet with Sheet No. 4 of 37 Sheets.
 2. Reinf. bars designated (E) shall be epoxy coated.
 3. Bars indicated thus 3x2-#15 etc. indicates 3 lines of bars with 2 lengths per line.
 4. Min. bar laps:
#15 bars - 510 mm #20 bars - 640 mm
#25 bars - 1060 mm #30 bars - 1480 mm
 5. Space reinforcement in cap to miss anchor bolts.
 6. Pour steps monolithically with cap.
 7. For Bar Splicer Assemblies, see Sheet No. 31 of 37.
 8. For Beam Skew Angle Table, see Sheet No. 30 of 37.
 9. For Anchor Bolt Locations, see Sheet No. 12 of 37, Fixed Pier Details.
 10. For Anchor Bolt Details, see Sheet No. 23 of 37.
 11. Space s(E) bars to clear piles.
 12. All dimensions are in millimeters (mm) except as noted.
- *For additional information see Bar Splicer details on sheet 31 of 37.

PILE DATA
Type - HP310 x 79
Capacity - 500 KN (Driven to 750 KN Bearing)
Est. Length - 14.70 m
No. Req'd. - 51 (Including 1 Test Pile Driven to 1,125 Kn Bearing)

DESIGNED	M.R./ H.T.
CHECKED	H.T.
DRAWN	J.B./ J.S.
CHECKED	H.T./ M.R.

ILLINOIS DEPARTMENT OF TRANSPORTATION
I-94/IL 394 SOUTH BOUND
PIER 2 (FIXED PIER)
SB IL. ROUTE 394 OVER CANADIAN NATIONAL RR
F.A.P. 332 SECTION (0203.1 & 0312-708(R) R-3
COOK COUNTY
STA. 39+752.246 S.N. 016-2798 (INSIDE LANES)
DATE: July 18, 2005
SCALE: NONE

Soodan & Associates, Inc.
100 North LaSalle Street, Suite 1800
Chicago, Illinois 60602