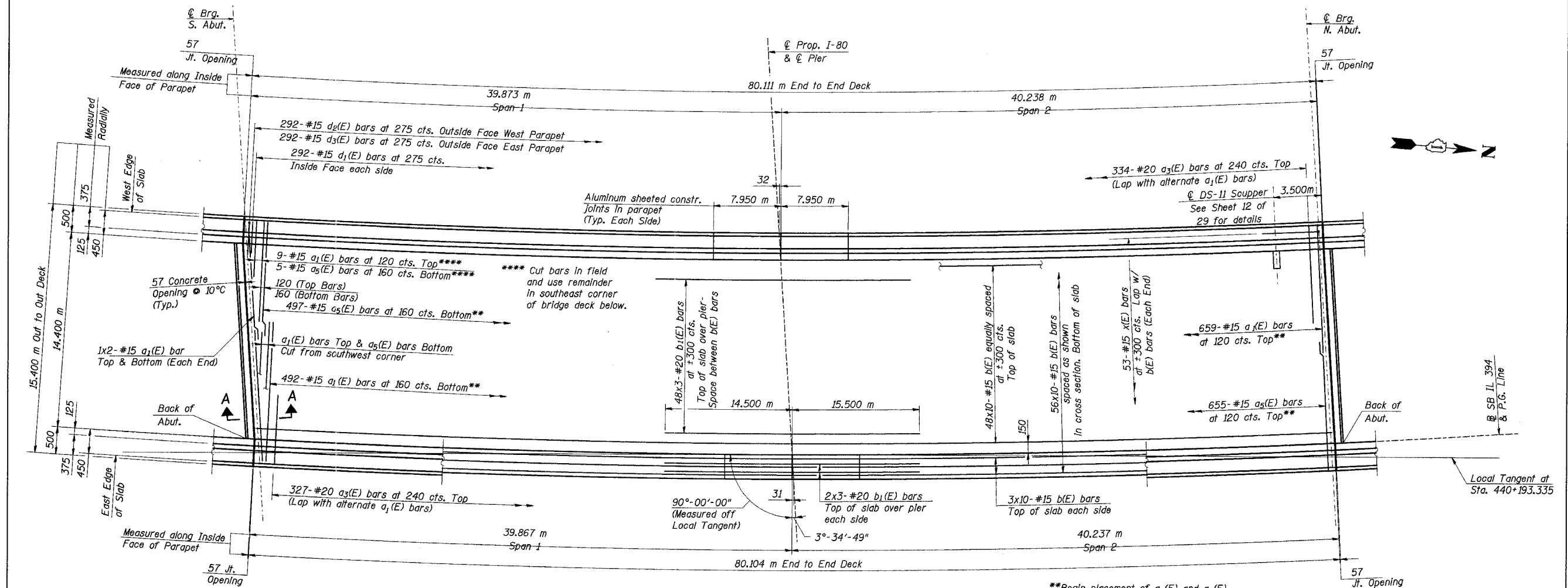


STATE OF ILLINOIS  
DEPARTMENT OF TRANSPORTATION

ROUTE NO.	SECTION	COUNTY	TOTAL SHEETS	SHEET NO.	SHEET NO. 9 29 SHEETS
F. A. I. 80/94	.	COOK	870	451	
FED. ROAD DIST. NO. 1		ILLINOIS	FED. AID PROJECT-	CONTRACT NO. 62108	



**PLAN**

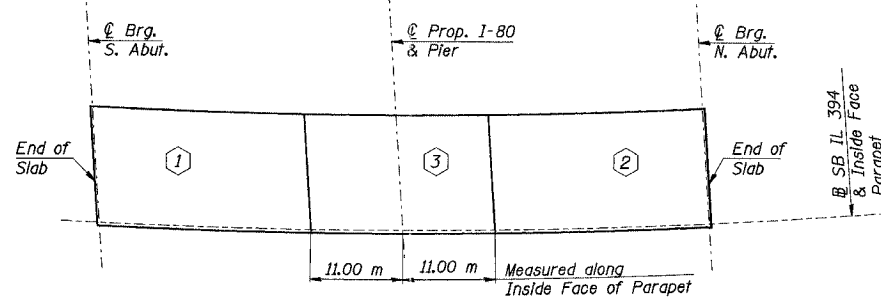
(Cork Filled Parapet Joint not shown)

\*\*Begin placement of a1(E) and a5(E) bars at Northwest corner of deck (Place perpendicular to girders)

Notes:

- Work this sheet with Sheet Numbers 10-12 of 29 Sheets.
- Reinforcement bars designated (E) shall be epoxy coated.
- Bars indicated thus "48 x 9 - #15 cts." indicates 48 lines of bars with 9 lengths per line.
- Min. slab bar laps (Unless otherwise shown):
 

	Bottom bars	Top bars
#15	510 mm	710 mm
#20	640 mm	890 mm
#25	1060 mm	1480 mm
- All dimensions are in millimeters (mm) except as noted.
- Place bars d(E), d1(E), d2(E), d3(E) to miss the Aluminum Sheeted Joint Location in Parapets.
- For localized Scupper reinforcement and Bill of Material see Sheet 12 of 29.

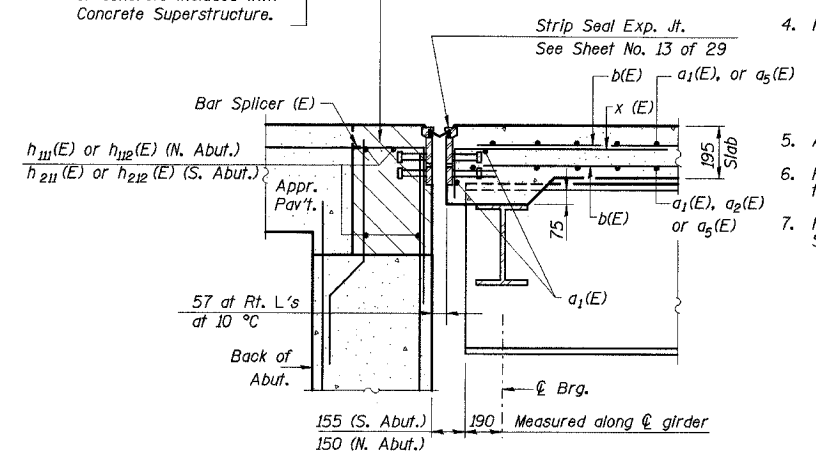


**SLAB POUR SEQUENCE DIAGRAM**

Sequence of Pour

DESIGNED	MEA
CHECKED	PY
DRAWN	LK
CHECKED	PY

Hatched area to be poured after superstructure forms have been removed. Quantity of concrete included with Concrete Superstructure.



**SECTION A-A**

(Section Thru N. Abut. similar)

ILLINOIS DEPARTMENT OF TRANSPORTATION  
I-94 EAST BOUND / IL 394 SOUTH BOUND

**DECK PLAN**

SB ILLINOIS ROUTE 394 OVER INTERSTATE 80  
F.A.P. 332 SECTION (0203.1 & 0312-708W) R-3  
COOK COUNTY  
STA. 440+193.335 STRUCTURE NO. 016-2796  
DATE 07/18/05  
SCALE ---

**HNTB**

J:\Benchamps\EA\34562\CADD\1\SNL\2796\CDS\CTR\_19\_2796.dgn  
 08-JUL-2005 13:55