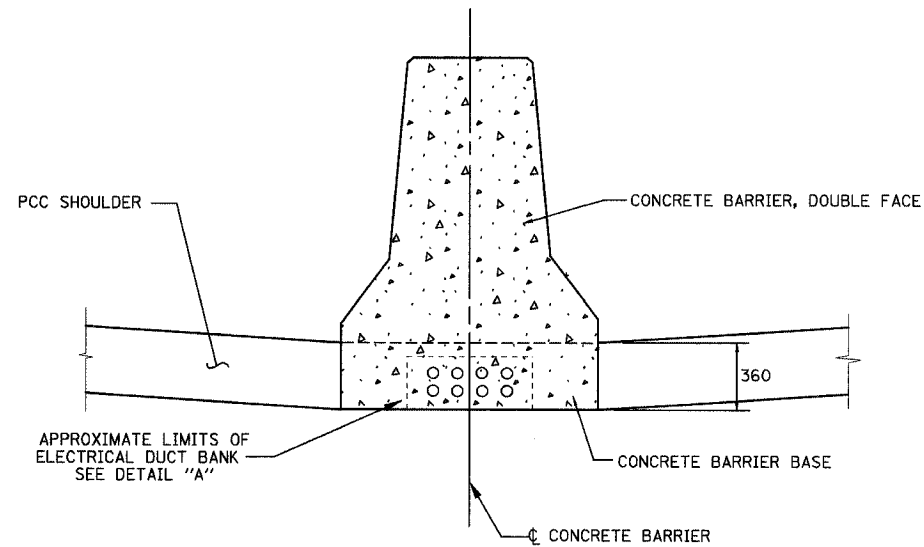
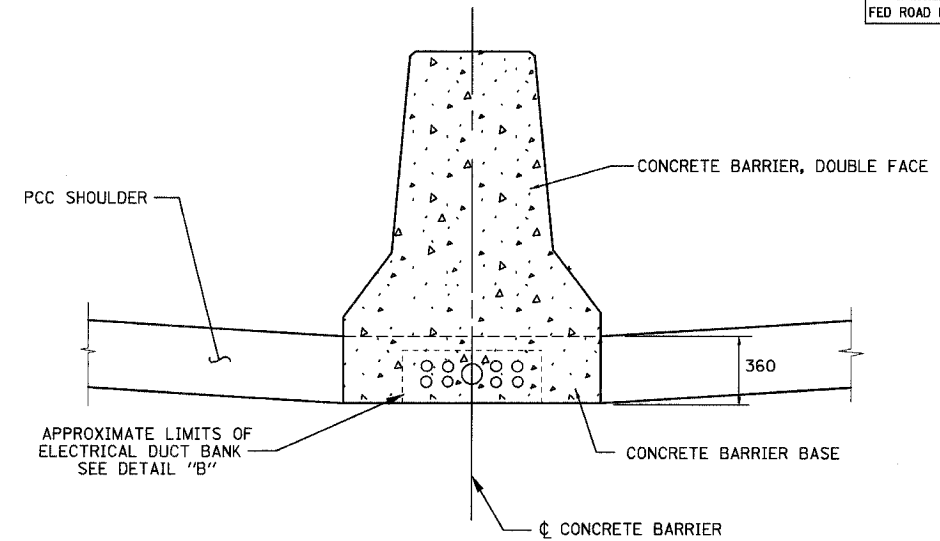


F.A.I. RTE	SECTION	COUNTY	TOTAL SHEETS	SHEET NO.
80/94	*	COOK	870	441
STA.		TO STA.		
FED ROAD DIST. NO.		ILLINOIS FED. AID PROJECT		



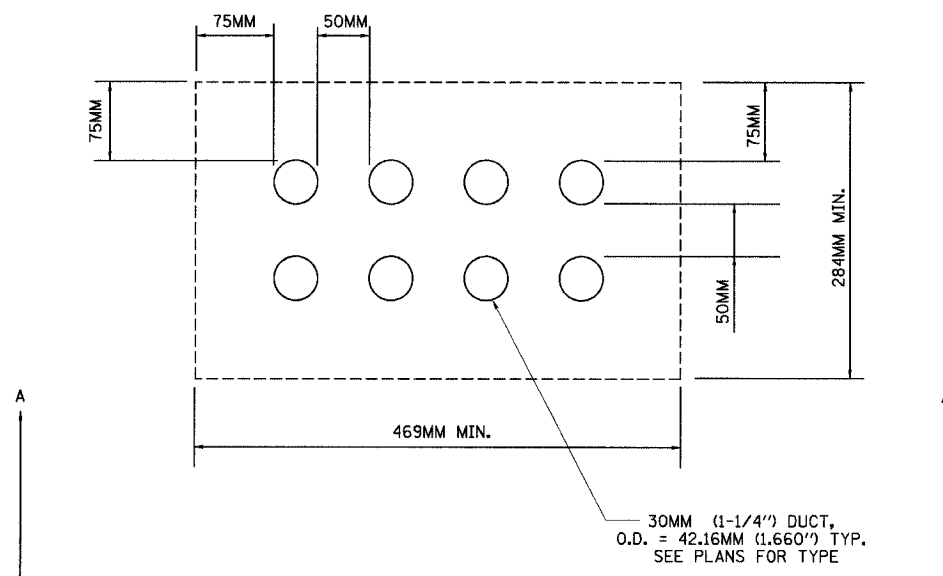
CONCRETE BARRIER, DOUBLE FACE

SHOWING 8 DUCT BANK



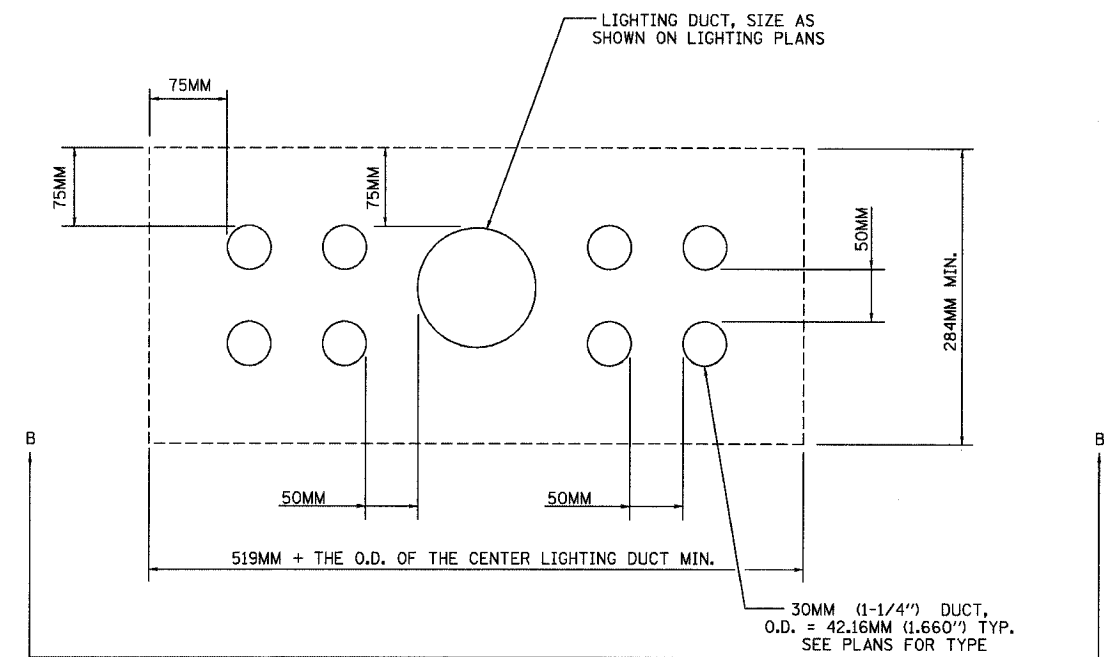
CONCRETE BARRIER, DOUBLE FACE

SHOWING 9 DUCT BANK



DETAIL "A"

SHOWING 8 CONDUITS EMBEDDED IN STRUCTURE



DETAIL "B"

SHOWING 9 CONDUITS EMBEDDED IN STRUCTURE

NOTES:

- 1) SEE "CONCRETE BARRIER DETAILS" FOR ADDITIONAL DETAILS OF THE CONCRETE BARRIER AND CONCRETE BARRIER BASE.
- 2) SEE PLANS FOR TYPES OF CONDUIT ENCASED IN CONCRETE.
- 3) THE LIGHTING DUCT SHALL BE OF THE TYPE AND SIZE AS SHOWN ON THE LIGHTING PLANS.

ED19-12

ILLINOIS DEPARTMENT OF TRANSPORTATION
I-94 EAST BOUND / IL 394 SOUTH BOUND

DETAILS FOR CONDUITS
EMBEDDED IN CONCRETE
BARRIER BASE

HORIZ SCALE:
VERT SCALE:
DATE: JULY 18, 2005

DRAWN BY:ACE/CAD
CHECKED BY:HNTB/SPR

REVISIONS	
NAME	DATE

AMERICAN
CONSULTING ENGINEERS