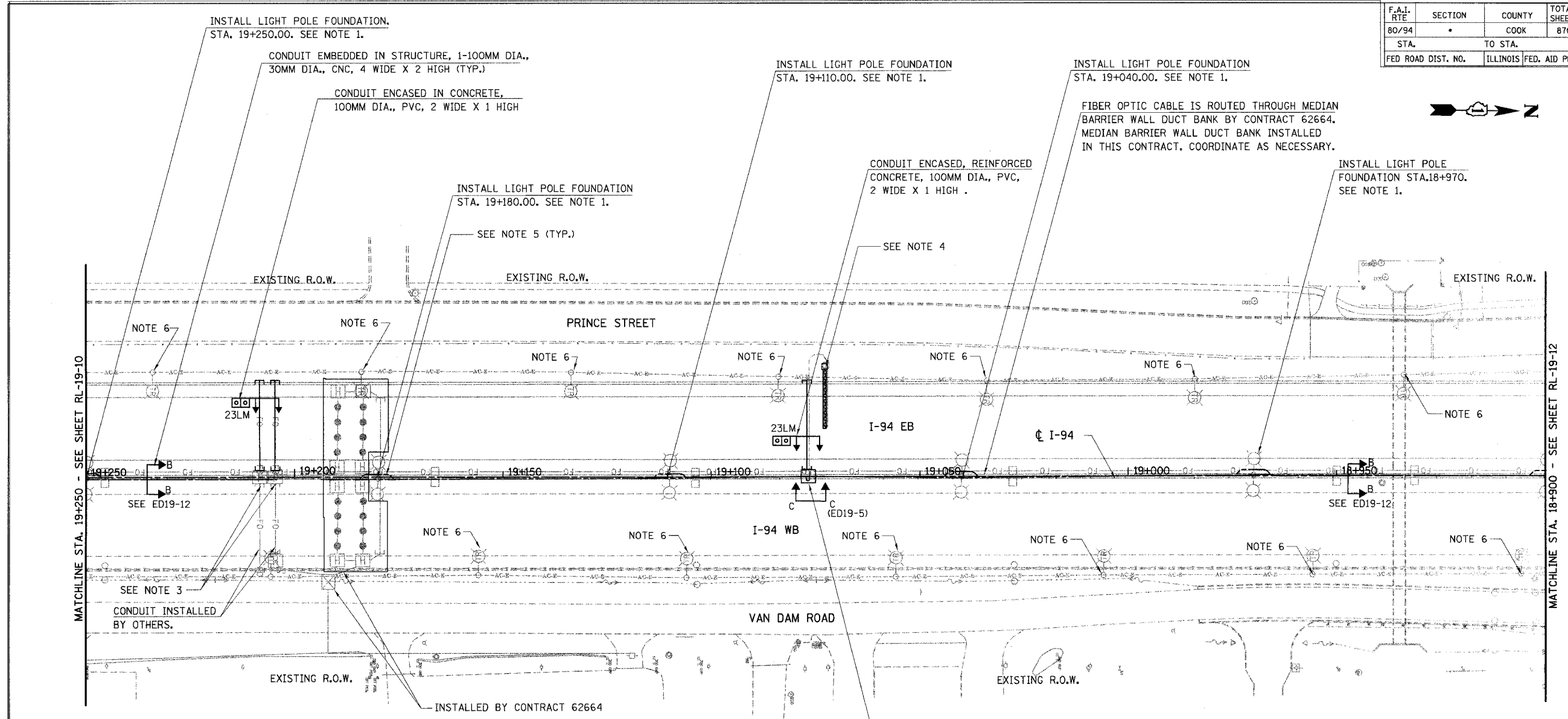
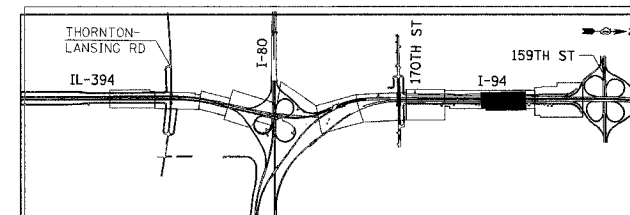


F.A.I. RTE	SECTION	COUNTY	TOTAL SHEETS	SHEET NO.
80/94		COOK	870	427
STA.		TO STA.		
FED ROAD DIST. NO.		ILLINOIS FED. AID PROJECT		



**NOTES:**

1. INSTALL FOUNDATION, CONDUITS, AND ANCHOR BOLTS FOR LIGHT POLE. CONTRACTOR TO COORDINATE THROUGH IDOT WITH CONTRACT 62664 TO OBTAIN ANCHOR BOLTS & ASSURE PROPER INSTALLATION. LIGHT POLE IS INSTALLED IN CONTRACT 62664. CONDUITS INSTALLED IN FOUNDATION SHALL BE 100MM DIA. RGS CONDUIT. SEE ED19-8.
2. JUNCTION BOX IS TO BE PROVIDED UNDER THIS CONTRACT. ELECTRIC CABLE FEEDING SIGN AND LUMINAIRES FOR SIGN IS FURNISHED AND INSTALLED UNDER CONTRACT 62664. SEE DETAIL D ON ED19-5.
3. INSTALL CONDUITS AND ALL NECESSARY STUB OUTS FOR JUNCTION BOXES LOCATED ON TOP OF MEDIAN BARRIER WALL. STUB OUTS ARE TO BE CONNECTED TO THE LATERAL CONDUITS WITH A COUPLING. THE LATERAL CONDUITS ARE EITHER EXISTING OR INSTALLED UNDER THIS CONTRACT. THE JUNCTION BOXES ARE INSTALLED UNDER CONTRACT 62664. COORDINATE AS NECESSARY. SEE DETAILS ON SHEET ED19-9.
4. SEE OVERHEAD SIGN STRUCTURE DRAWINGS FOR CONDUIT IN FOUNDATION DETAILS. ORIENT CONDUIT IN FOUNDATION SO THAT STUB OUT IS POINTING SOUTH. ELECTRIC CABLE FEEDING SIGN IS INSTALLED UNDER CONTRACT 62664.
5. ROUTE 30MM DIA. CNC DUCT BANK AROUND LIGHT POLE FOUNDATION. THIS WILL BE PAID FOR AS "CONDUIT ENCASED, REINFORCED CONCRETE, 30MM DIA, CNC, 4 WIDE X 2 HIGH". LIGHTING CONDUIT IS ATTACHED TO CONDUIT IN LIGHT POLE FOUNDATION. SEE CONDUIT ROUTING DETAIL ED19-11.
6. THIS ITEM IS INSTALLED AND REMOVED DURING CONTRACT 62108 WITH CONCURRENT WORK UNDER CONSTRUCTION BY CONTRACT 62664.
7. ALL PVC ENCASED OR EMBEDDED IN CONCRETE WILL BE PVC SCHEDULE 40. (TYP.)



REVISIONS	
NAME	DATE

RL19-11

ILLINOIS DEPARTMENT OF TRANSPORTATION  
I-94 EAST BOUND / IL 394 SOUTH BOUND

**ROADWAY CONDUIT PLAN**  
STA. 18+900 TO STA. 19+250

HORIZ SCALE: 1:500  
VERT SCALE: 1:50  
DATE: JULY 18, 2005

DRAWN BY: SPR  
CHECKED BY: BB

**HNTB**