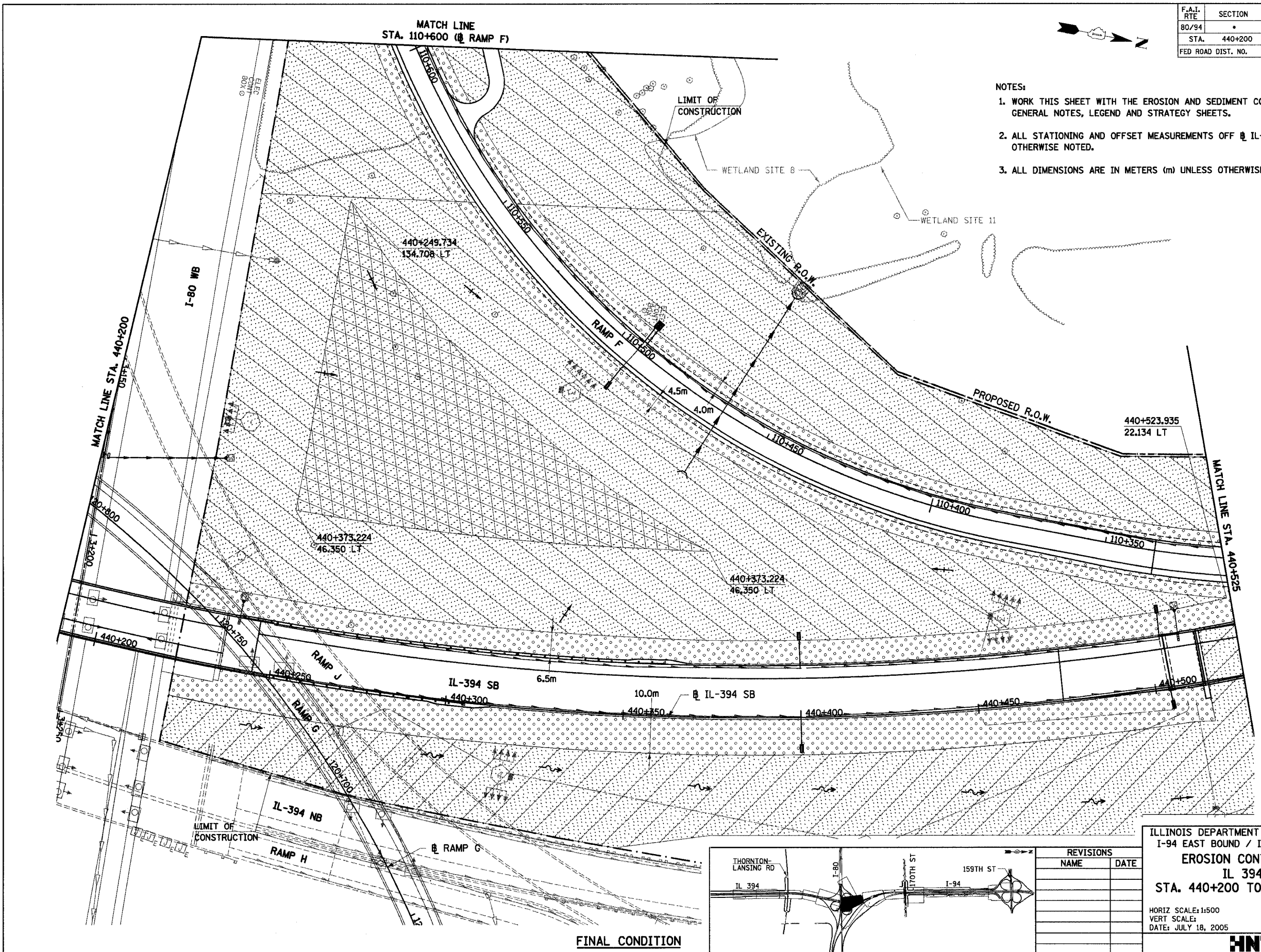
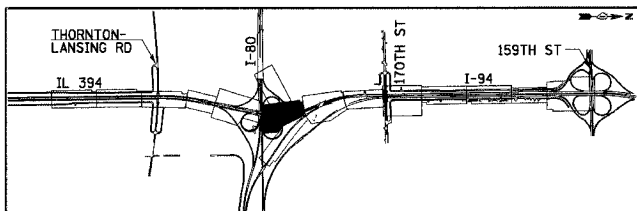


F.A.I. RTE	SECTION	COUNTY	TOTAL SHEETS	SHEET NO.
80/94	*	COOK	870	402
STA. 440+200 TO STA. 440+525				
FED ROAD DIST. NO.		ILLINOIS	FED. AID PROJECT	

- NOTES:
1. WORK THIS SHEET WITH THE EROSION AND SEDIMENT CONTROL GENERAL NOTES, LEGEND AND STRATEGY SHEETS.
 2. ALL STATIONING AND OFFSET MEASUREMENTS OFF IL-394 UNLESS OTHERWISE NOTED.
 3. ALL DIMENSIONS ARE IN METERS (m) UNLESS OTHERWISE NOTED.



FINAL CONDITION



REVISIONS	
NAME	DATE

EC-21
 ILLINOIS DEPARTMENT OF TRANSPORTATION
 I-94 EAST BOUND / IL 394 SOUTH BOUND
EROSION CONTROL PLAN
 IL 394 SB
 STA. 440+200 TO STA. 440+525

HORIZ SCALE: 1:500
 VERT SCALE:
 DATE: JULY 18, 2005

DRAWN BY: BAJ
 CHECKED BY: MAM

HNTB