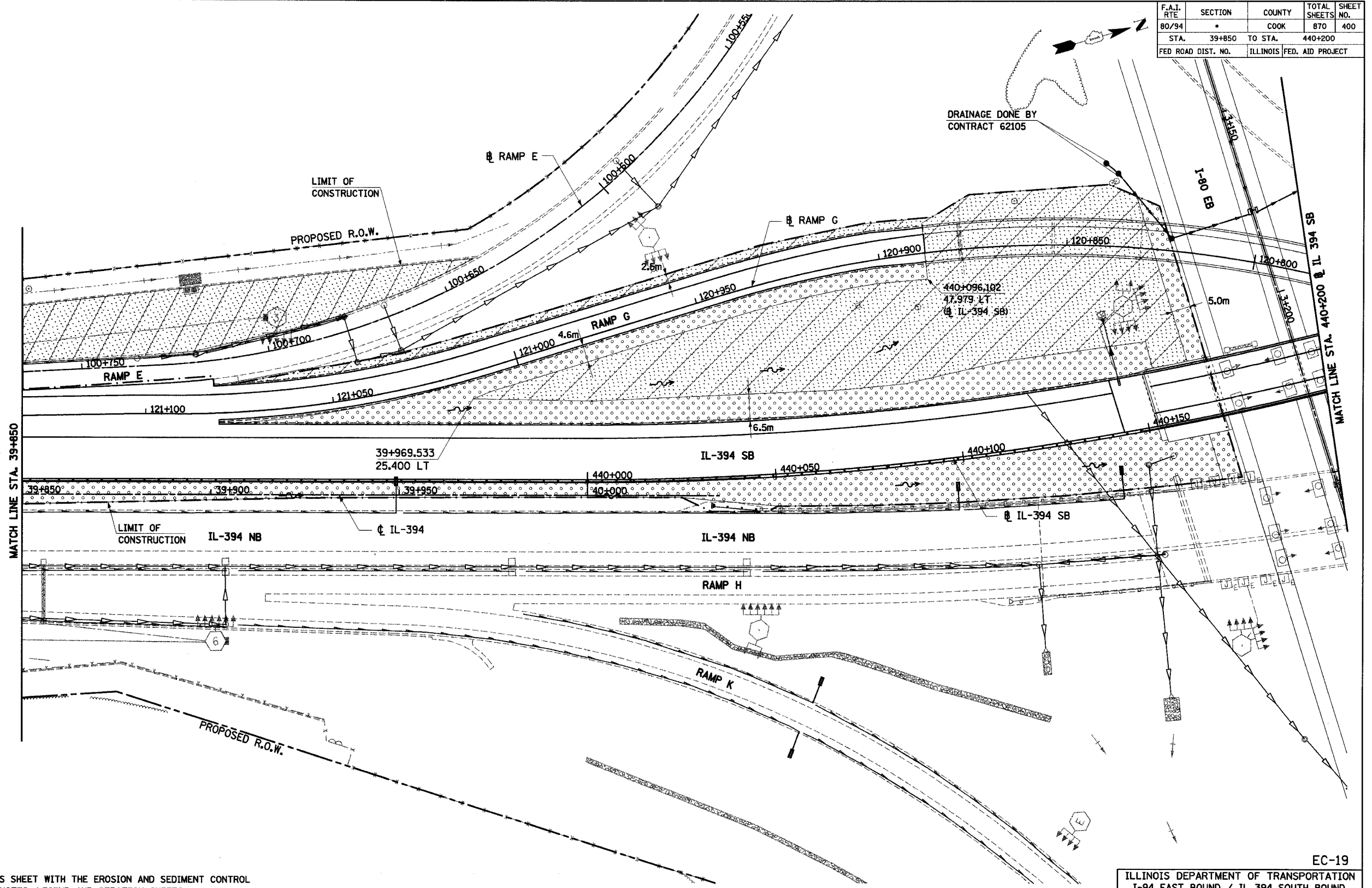


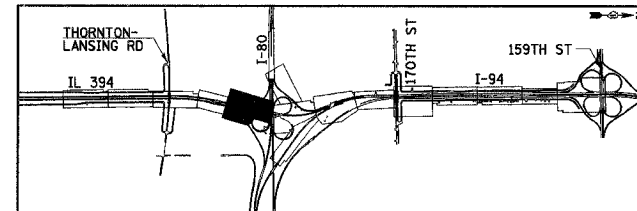
F.A.I. RTE	SECTION	COUNTY	TOTAL SHEETS	SHEET NO.
80/94		COOK	870	400
STA. 39+850		TO STA. 440+200		
FED ROAD DIST. NO.		ILLINOIS FED. AID PROJECT		



NOTES:

1. WORK THIS SHEET WITH THE EROSION AND SEDIMENT CONTROL GENERAL NOTES, LEGEND AND STRATEGY SHEETS.
2. ALL STATIONING AND OFFSET MEASUREMENTS OFF ϕ IL-394 UNLESS OTHERWISE NOTED.
3. ALL DIMENSIONS ARE IN METERS (m) UNLESS OTHERWISE NOTED.
4. COORDINATE EROSION CONTROL WITH CONTRACT 62348 AND CONTRACT 62105.

FINAL CONDITION



REVISIONS	
NAME	DATE

EC-19

ILLINOIS DEPARTMENT OF TRANSPORTATION
 I-94 EAST BOUND / IL 394 SOUTH BOUND
EROSION CONTROL PLAN
IL 394
 STA. 39+850 (ϕ IL 394) TO
 STA. 440+200 (ϕ IL 394 SB)

HORIZ SCALE: 1:500
 VERT SCALE: 1:500
 DATE: JULY 18, 2005

DRAWN BY: JPH
 CHECKED BY: MAM

HNTB