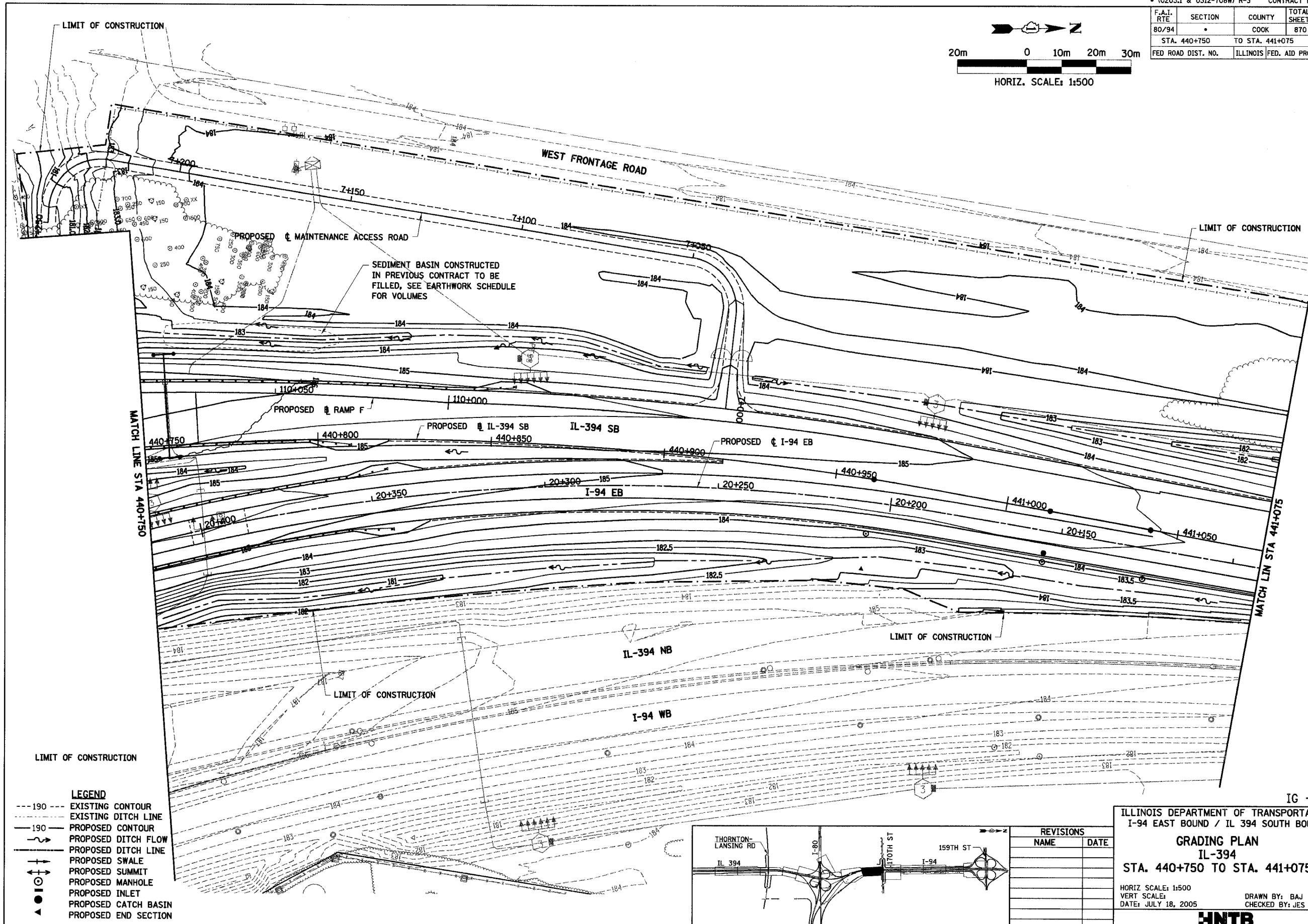
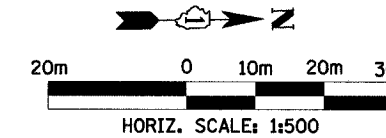
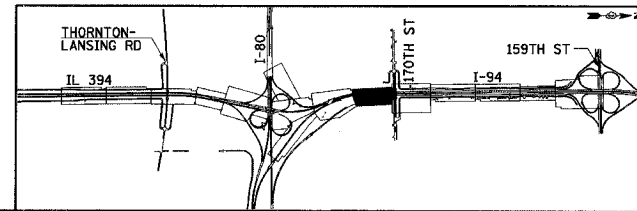


F.A.I. RTE	SECTION	COUNTY	TOTAL SHEETS	SHEET NO.
80/94	.	COOK	870	380
STA. 440+750		TO STA. 441+075		
FED ROAD DIST. NO.		ILLINOIS FED. AID PROJECT		



LEGEND

- 190 --- EXISTING CONTOUR
- 190 --- EXISTING DITCH LINE
- 190 --- PROPOSED CONTOUR
- 190 --- PROPOSED DITCH FLOW
- 190 --- PROPOSED DITCH LINE
- 190 --- PROPOSED SWALE
- 190 --- PROPOSED SUMMIT
- 190 --- PROPOSED MANHOLE
- 190 --- PROPOSED INLET
- 190 --- PROPOSED CATCH BASIN
- 190 --- PROPOSED END SECTION



REVISIONS	
NAME	DATE

IG - 10
 ILLINOIS DEPARTMENT OF TRANSPORTATION
 I-94 EAST BOUND / IL 394 SOUTH BOUND
GRADING PLAN
IL-394
STA. 440+750 TO STA. 441+075
 HORIZ SCALE: 1:500
 VERT SCALE:
 DATE: JULY 18, 2005
 DRAWN BY: BAJ
 CHECKED BY: JES
HNTB