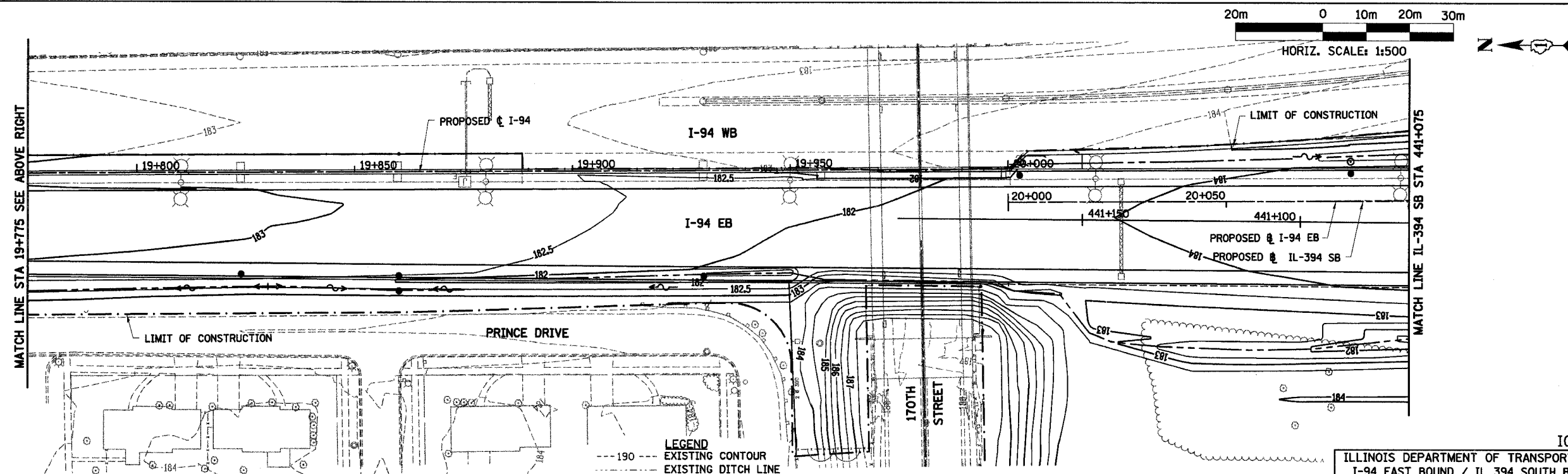
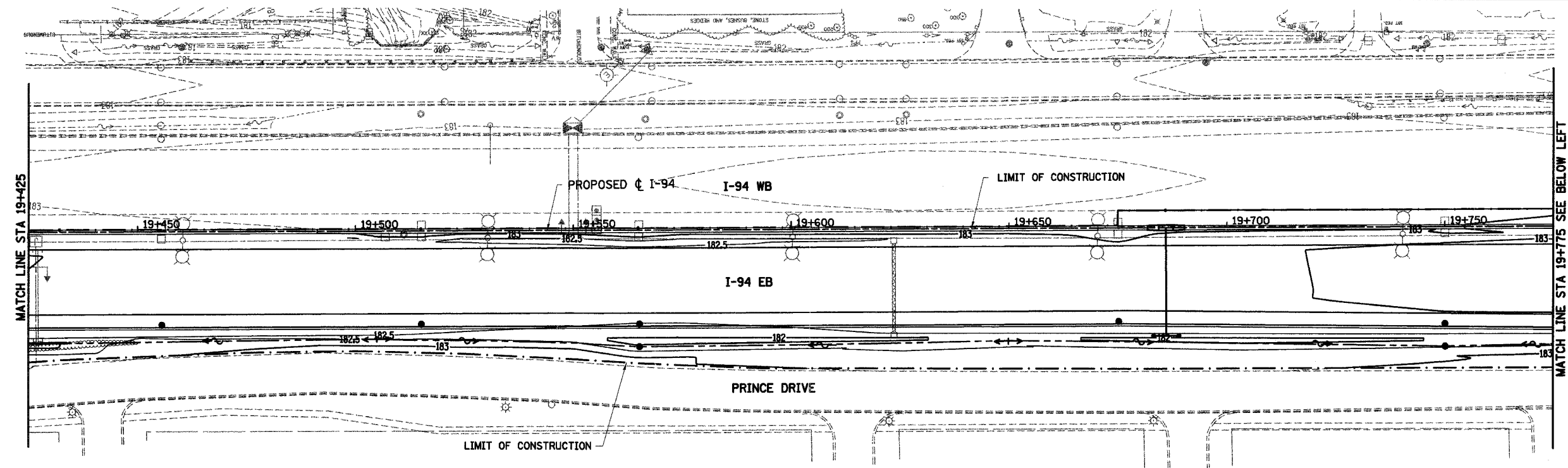
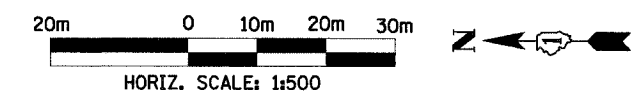
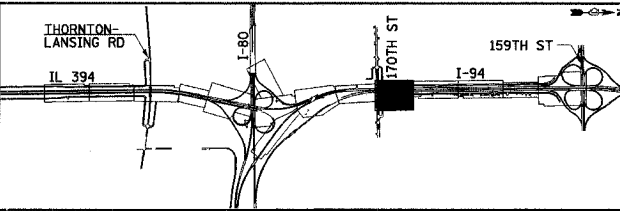


F.A.I. RTE	SECTION	COUNTY	TOTAL SHEETS NO.
80/94	*	COOK	870 373
STA. 19+425		TO STA. IL-394 SB 441+075	
FED ROAD DIST. NO.		ILLINOIS FED. AID PROJECT	



- LEGEND**
- 190 EXISTING CONTOUR
 - 190 EXISTING DITCH LINE
 - - - 190 PROPOSED CONTOUR
 - PROPOSED DITCH FLOW
 - PROPOSED DITCH LINE
 - PROPOSED SWALE
 - PROPOSED SUMMIT
 - PROPOSED MANHOLE
 - PROPOSED INLET
 - PROPOSED CATCH BASIN
 - PROPOSED END SECTION



REVISIONS	
NAME	DATE

IG - 3

ILLINOIS DEPARTMENT OF TRANSPORTATION
I-94 EAST BOUND / IL 394 SOUTH BOUND

GRADING PLAN
IL-94
STA. 19+425 TO IL-394 SB 441+075

HORIZ SCALE: 1:500
VERT SCALE:
DATE: JULY 18, 2005

DRAWN BY: BAJ
CHECKED BY: JES

HNTB