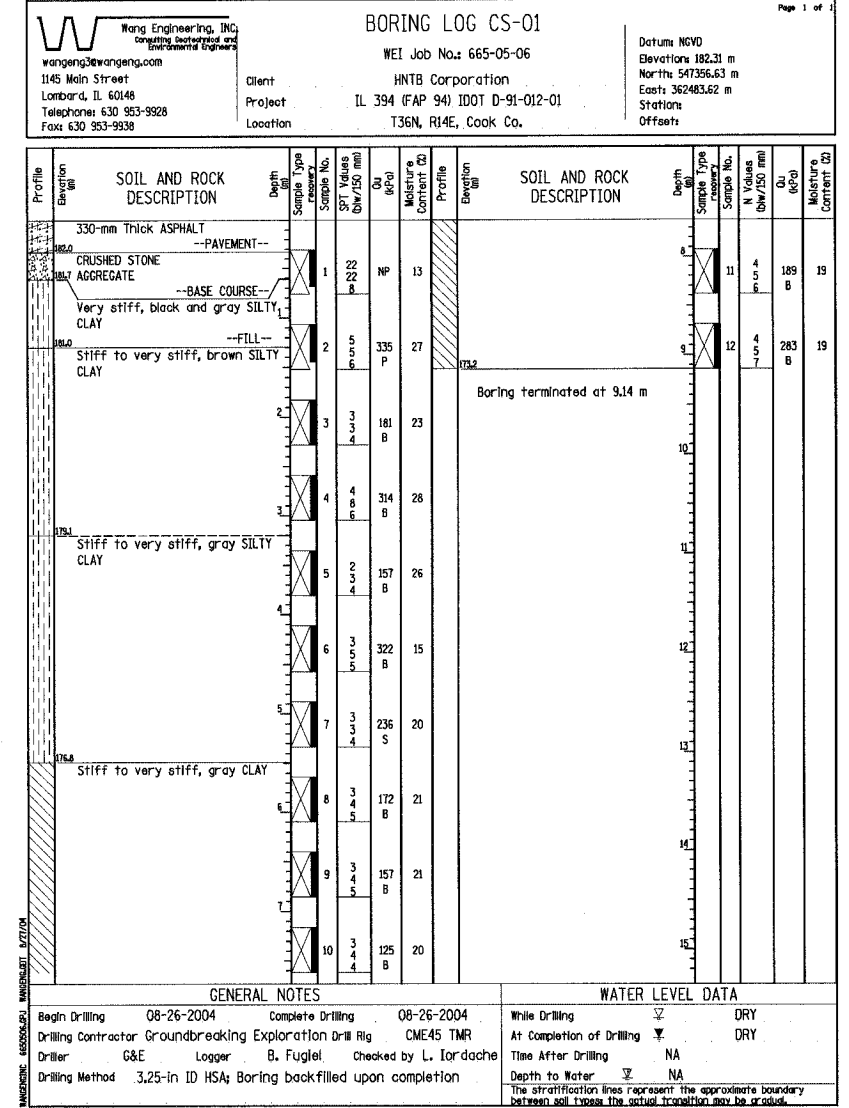
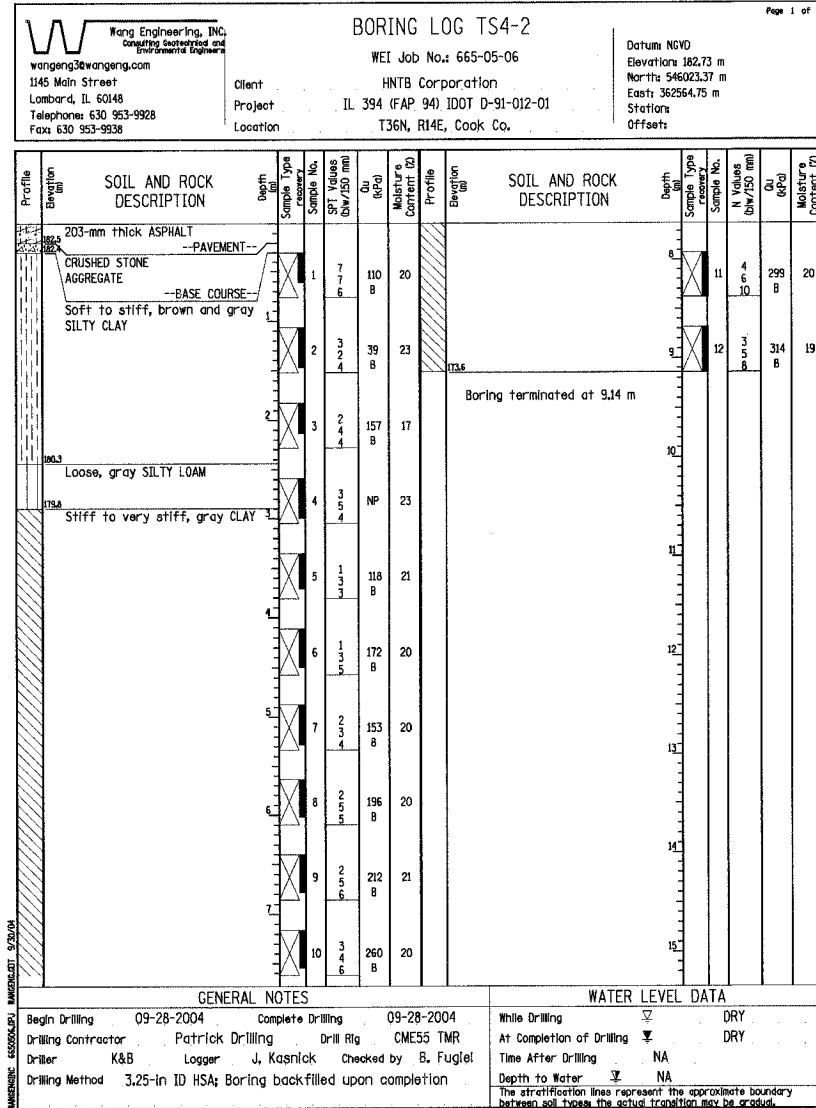
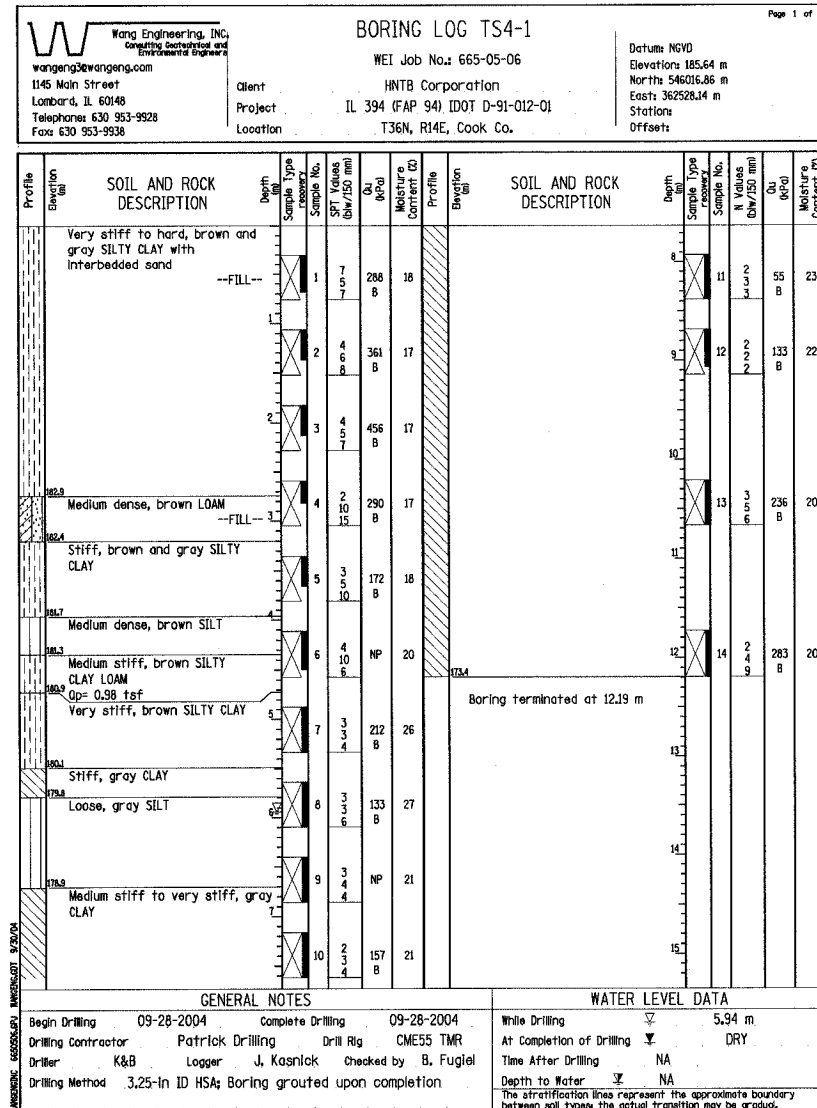


STATE OF ILLINOIS
DEPARTMENT OF TRANSPORTATION

ROUTE No.	SECTION	COUNTY	TOTAL SHEETS	SHEET No.
F. A. I. 80/94	*	COOK	870	351
FED. ROAD DIST. NO. 1		ILLINOIS	FED. AID PROJECT-	
* (0203.1 & 0312-708W) R3		CONTRACT NO. 62108		



J:\Beauchamp
E:\34562\CADD\B1\Signa\Contract\19\cda\lpl\90014a.dgn
08-JUL-2005 15:33

DESIGNED	PY
CHECKED	DD
DRAWN	LK
CHECKED	DD

ILLINOIS DEPARTMENT OF TRANSPORTATION
I-80/94/US 6 (KINGERY EXPRESSWAY)

PROPOSED SIGN STRUCTURES
BORING LOGS TS4-1, TS4-2, CS-01

DATE: JUL 18, 2005
SCALE: ---

HNTB