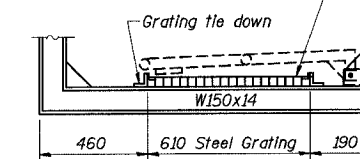


STATE OF ILLINOIS  
DEPARTMENT OF TRANSPORTATION

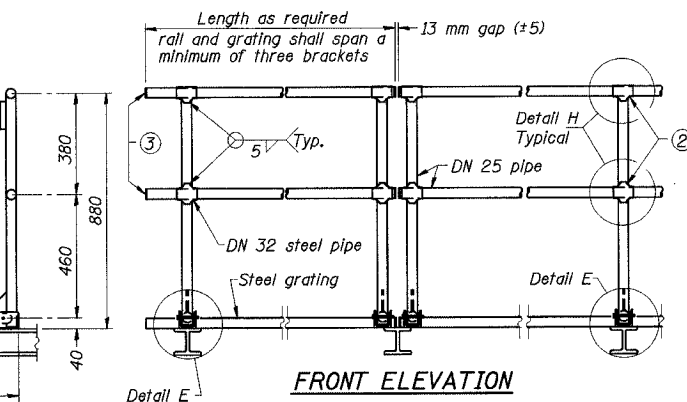
ROUTE NO.	SECTION	COUNTY	TOTAL SHEETS	SHEET NO.
F. A. I. 80/94	*	COOK	870	347
FED. ROAD DIST. NO. 1 ILLINOIS FED. AID PROJECT- * 0203.1 & 0312-708W R3 CONTRACT NO. 62108				

③ Install standard force-fit end caps or weld 3 mm end plates with 3 mm c.f.w. and grind smooth. (All rail ends.)

Welded Bar or Formed Plank Steel Grating  
Formed plank grating is considered an equal alternative to welded bar grating and may be substituted by Contractor at no change in contract cost.

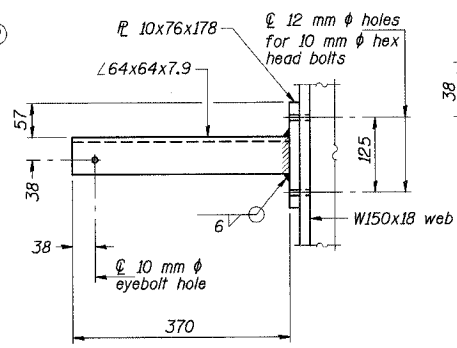


SIDE ELEVATION

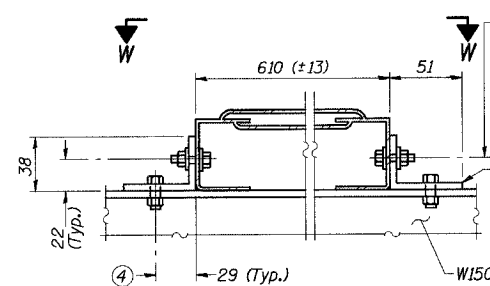


FRONT ELEVATION

DETAIL D HANDRAIL



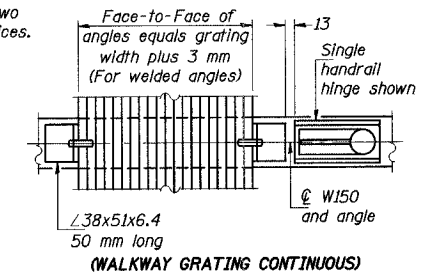
SECTION P-P



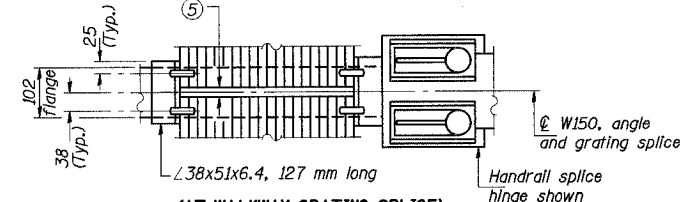
ALTERNATE FORMED PLANK GRATING DETAILS

Plank Grating: nominal depth = 64 (+13); perforated or expanded steel sheet with a non-skid surface (non-serrated) concentrated load capacity = 2.2 kN with 1.83 m clear span.

Drill ① 10 mm  $\phi$  holes in walkway for 8 mm  $\phi$  bolts with flat washers under head and locknut. Provide one per angle for continuous grating and two per angle at grating splices.

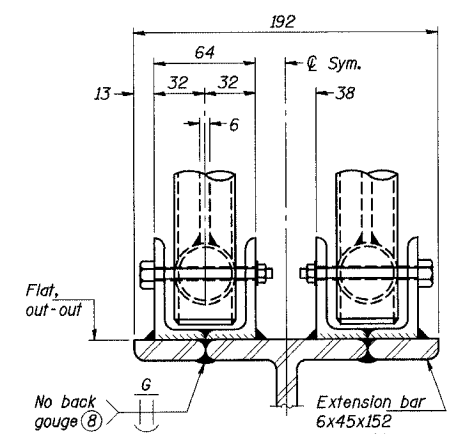


WALKWAY GRATING CONTINUOUS



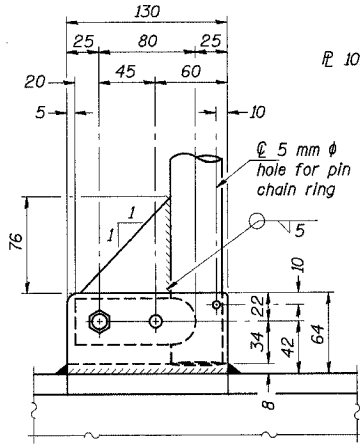
(AT WALKWAY GRATING SPLICE) PLAN

(Showing welded angles ④)

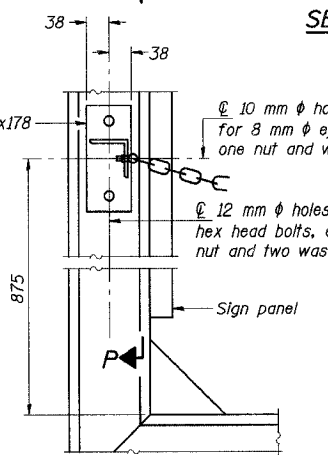


ELEVATION AT HANDRAIL JOINT

(Details not shown same as "FRONT ELEVATION")

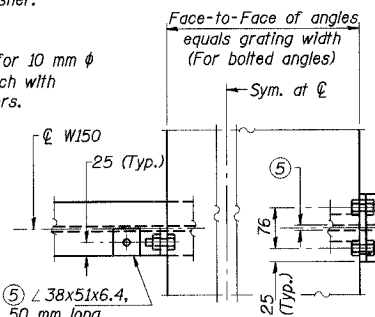


SIDE ELEVATION



SAFETY CHAIN ATTACHMENT

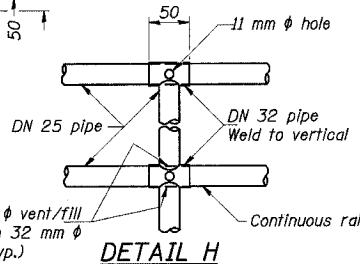
(With Sign Present)  
Items not shown same as "SIDE ELEVATION" and "SAFETY CHAIN"



GRATING CONTINUOUS AT GRATING SPLICE

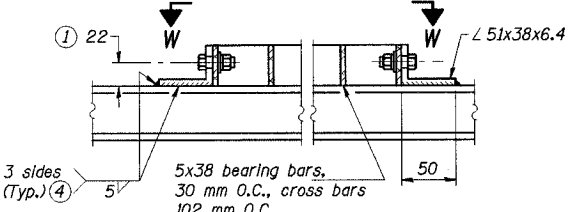
(Showing bolted angles ④)

④ 10 mm  $\phi$  holes for 8 mm  $\phi$  bolts with one washer and locknut per bolt. (Typ.) Provide one per angle at continuous grating or two per angle at grating splices.



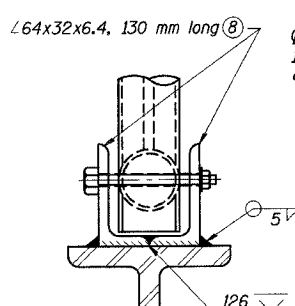
DETAIL H

Welds 5 mm continuous



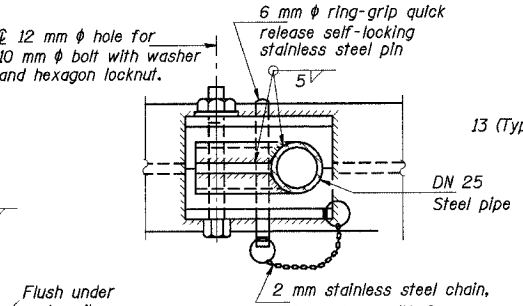
WELDED BAR GRATING DETAILS

(Showing optional welded angle attachment ④)



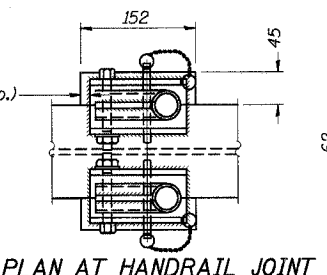
FRONT ELEVATION

(See above Elevations for dimensions.)



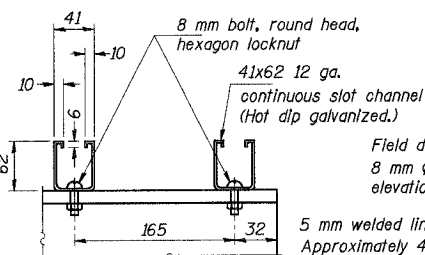
PLAN AT SINGLE HANDRAIL HINGE

DETAIL E



PLAN AT HANDRAIL JOINT

(For Details, see Elevations.)



SECTION F-F LIGHTING FIXTURE MOUNTS

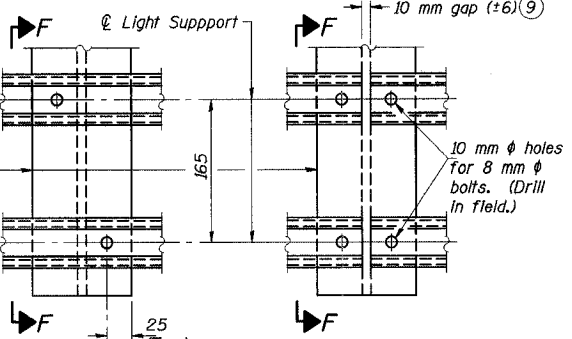
(If required)

Field drill 10 mm  $\phi$  holes for 8 mm  $\phi$  eye-bolt. (At approximately elevation of upper handrail pipe.)

Attach bronze swivel eye snap at handrail end.

SAFETY CHAIN

One ① required for each end of each walkway.



DETAIL F

DETAIL G

NOTES

- Drilling holes in grating may be done in shop or field, based on Contractor's preference and subject to accurate alignment.
- Horizontal rail member shall be continuous thru DN 32 pipe. Provide 12 mm  $\phi$  hole in fitting for 10 mm  $\phi$  bolt. Field drill 12 mm  $\phi$  hole in horizontal rail member. Provide washer and locknut for bolt. (Use 8 mm eyebolts in 12 mm  $\phi$  holes on top rail at ends only.)
- Grating tie-down angles may be either bolted to W150x14 after galvanizing or welded to W150x14 before galvanizing, at the Contractor's option. (No weld on grating side.)
- 10 mm (+6) gap between grating panels at splice.
- Chain to be hot dip galvanized after manufacture and suitable for prolonged exterior exposure. Alternate materials may be substituted with the Engineer's approval. Approximately 1.07 m long chain per location. Maximum sag with handrail erected = 100 mm.
- 3x13x50 welded to handrail posts to protect locations that contact grating.
- Extrusions may be used in lieu of details shown, with approval by Engineer.
- Field out ends of light support channels shall be free of burrs or hazardous projections and coated with zinc-rich primer or equivalent.

NUMBER	REVISION	DATE

DESIGNED	PY
CHECKED	DD
DRAWN	LK
CHECKED	DD

BM-4(M)

11/1/2002

ILLINOIS DEPARTMENT OF TRANSPORTATION  
I-80/94/US 6 (KINGERY EXPRESSWAY)

BRIDGE MOUNT SIGN STRUCTURES  
WALKWAY DETAILS

DATE: JUL 18, 2005  
SCALE ---

HNTB

J:\Beauchamp  
E:\34852\CAD00\B1\Signs\Contract\9\coda\ast\90314e.dgn  
08-JUL-2005 15:33