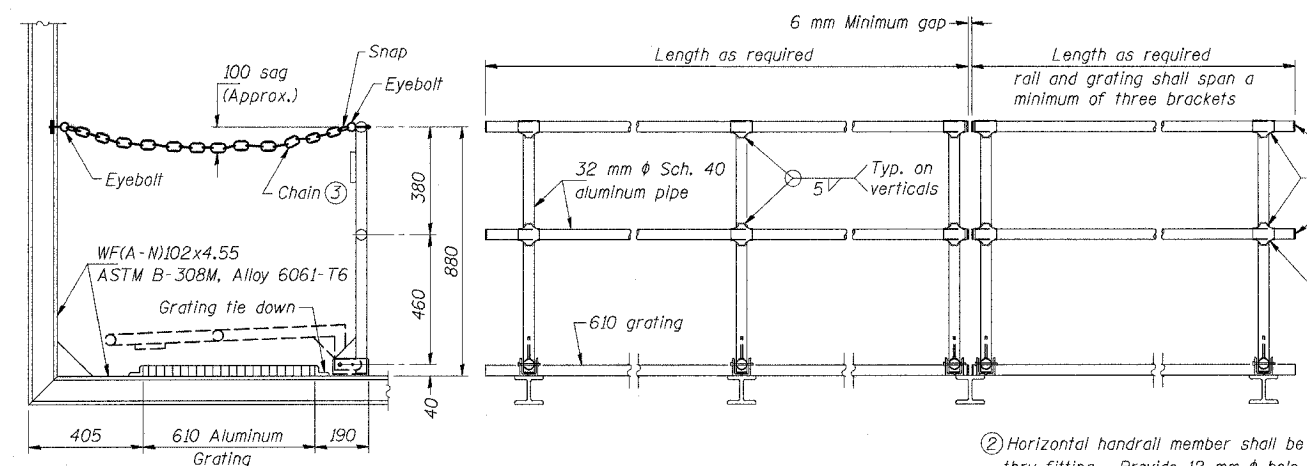


F.A.I. RTE.	SECTION	COUNTY	TOTAL SHEETS	SHEET NO.
80/94		COOK	870	342
STA.	TO STA.			
FED. ROAD DIST. NO. 1	ILLINOIS	FED. AID PROJECT		
• (0203.1 & 0312-708W) R-3 CONTRACT # 62108				



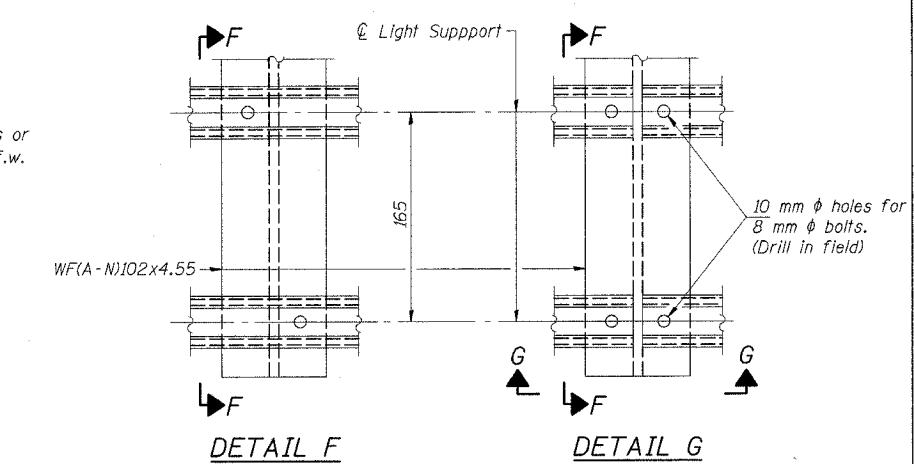
SIDE ELEVATION
(Showing Safety Chain W/O Sign)

HANDRAIL DETAILS

FRONT ELEVATION

Handrail pipe shall be ASTM B241M, Alloy 6063-T6 or Alloy 6061-T6.

① Install standard force-fit end caps or weld 3 mm end plates with 3 mm c.f.w. and grind smooth. (All rail ends)
Fittings- ASTM B-26M, Alloy 356-T7
② Horizontal handrail member shall be continuous thru fitting. Provide 12 mm ϕ hole in fitting for 10 mm ϕ bolt. Field drill 12 mm ϕ hole in horizontal rail member. Provide locknut and two stainless steel washers for bolt. (Use 8 mm eyebolts in 12 mm ϕ holes on top rail at ends only.)



DETAIL F

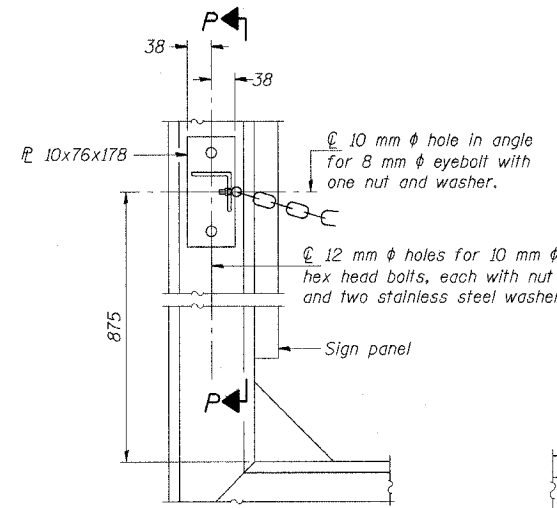
DETAIL G

SECTION F-F

SECTION G-G

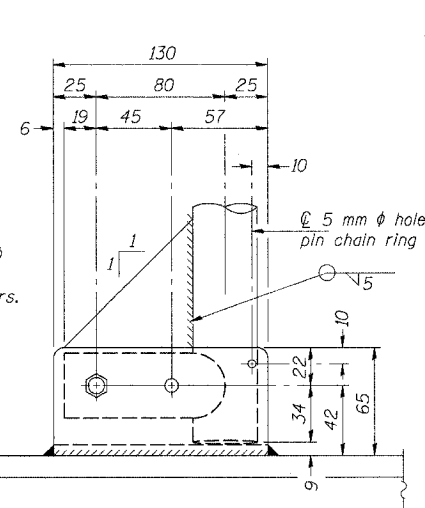
LIGHTING FIXTURE MOUNTS (IF REQUIRED)

⑤ Field out ends of light support channels shall be free of burrs or hazardous projections and coated with zinc-rich primer or equivalent.



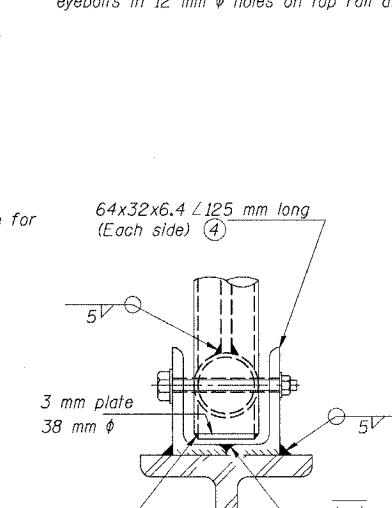
ALTERNATE SAFETY CHAIN ATTACHMENT

(With Sign Present)
Items not shown same as "Side Elevation" of "Handrail Details"



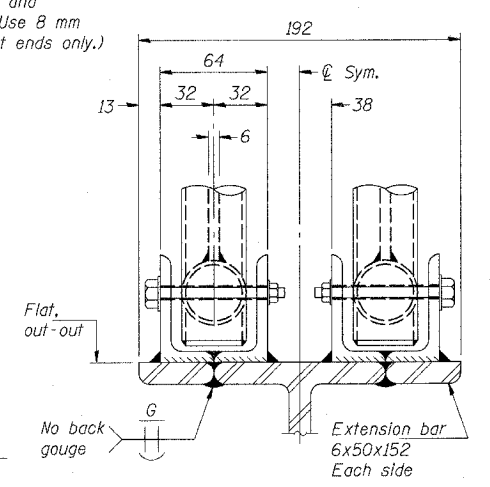
SIDE ELEVATION

Drill and ream for 10 mm ϕ stainless steel bolt with hexagon locknut and two stainless steel washers.



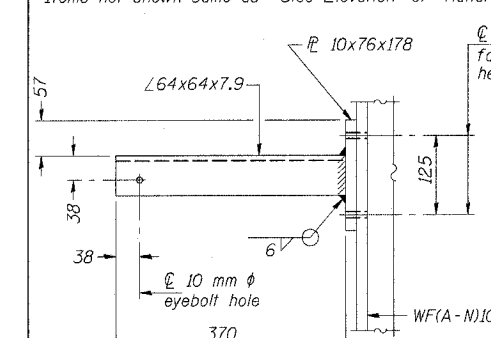
FRONT ELEVATION

See "ELEVATION" at right for dimensions.

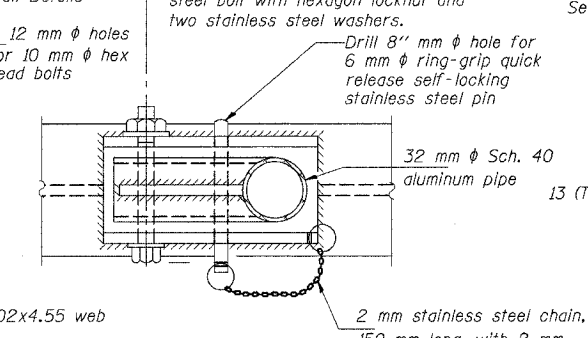


ELEVATION AT HANDRAIL JOINT

Details not shown same as "FRONT ELEVATION"

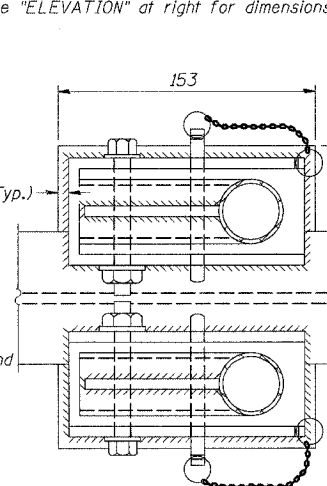


SECTION P-P



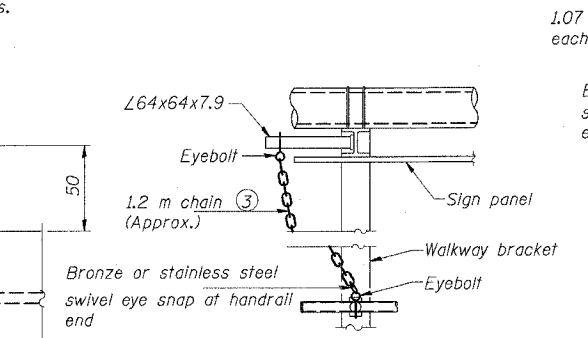
**PLAN
DETAIL E HANDRAIL HINGE**

NUMBER	REVISION	DATE



PLAN AT HANDRAIL JOINT

Details not shown same as "PLAN"

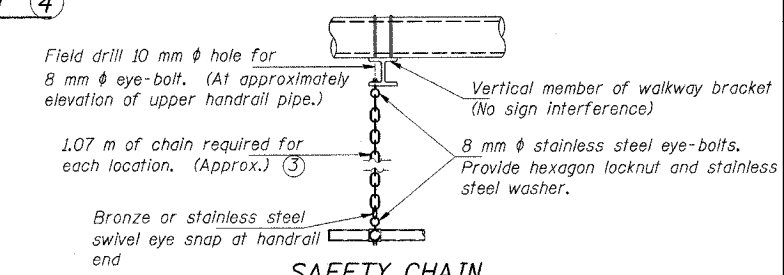


ALTERNATE SAFETY CHAIN ATTACHMENT

Details not shown similar to "Safety Chain" Details (Walkway omitted for clarity)

③ 5 mm galvanized steel chain, approximately 40 links per meter. Chain to be hot dip galvanized after manufacture and suitable for prolonged exterior exposure. Alternate materials may be substituted with the Engineer's approval.

④ Extrusions may be used in lieu of the details shown, with approval of the Engineer.



SAFETY CHAIN

One required for each end of each walkway.

CSS-8

**CANTILEVER SIGN STRUCTURES
HANDRAIL DETAILS
ALUMINUM TRUSS & STEEL POST**

REVISIONS		ILLINOIS DEPARTMENT OF TRANSPORTATION F.A.I. ROUTE 80/94 (INTERSTATE 80/294) OVERHEAD SIGN STRUCTURES 1-94 WB & 1-94 EB COOK COUNTY SECTION (0203.1 & 0312.708W) R-3
NAME	DATE	

DESIGNED BY
DATE: March 1, 2005 CHECKED BY
McDonough Associates Inc.
Engineers / Architects