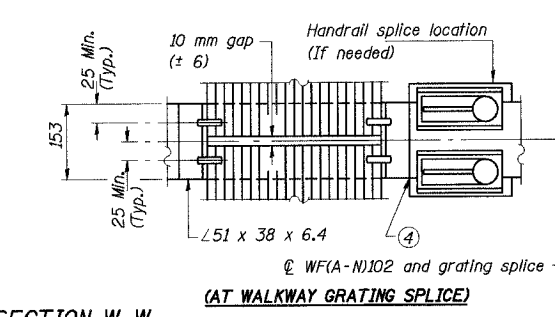
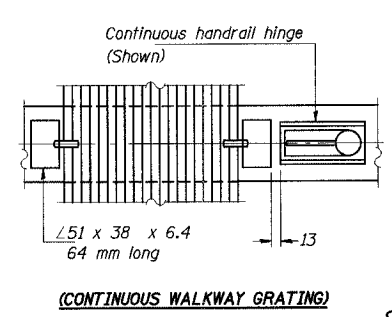
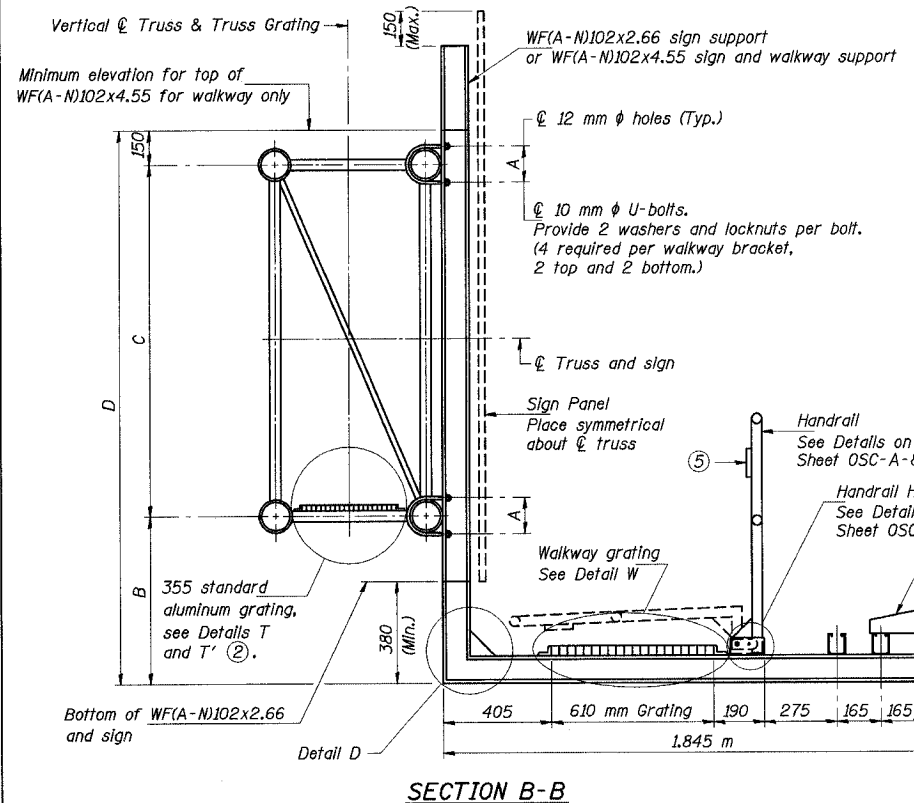
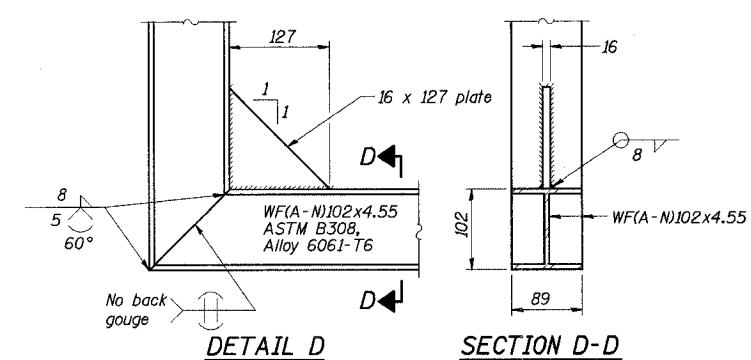
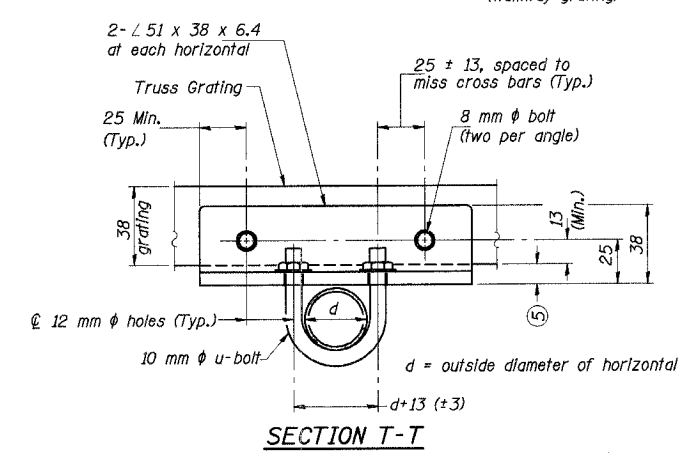
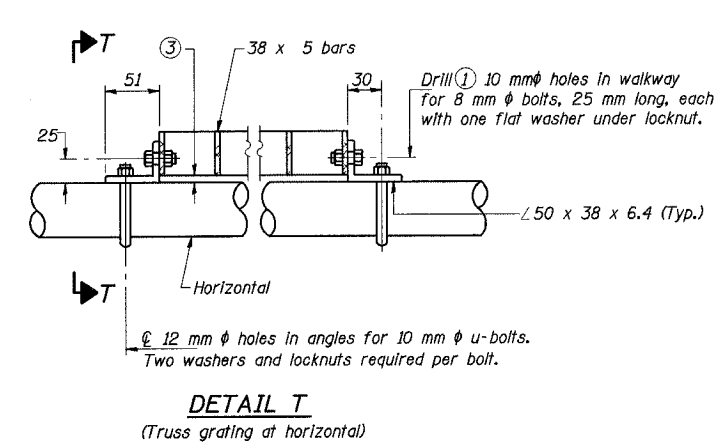
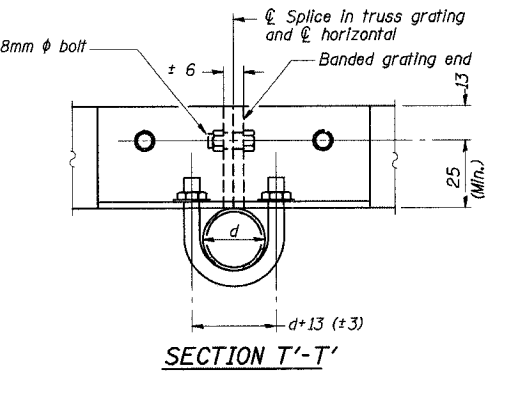
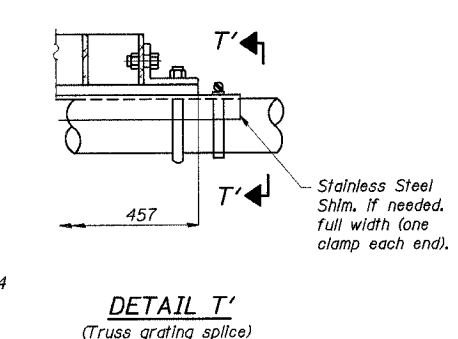
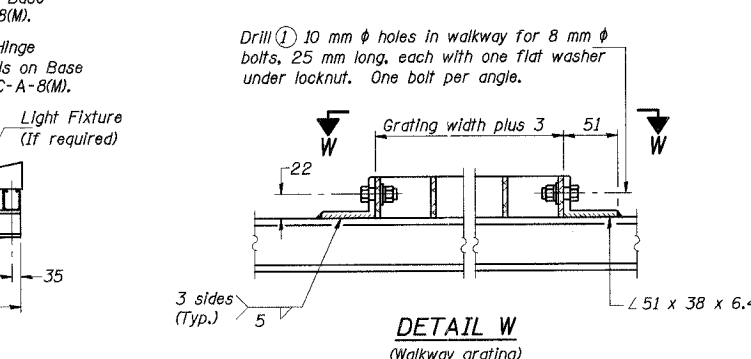


STATE OF ILLINOIS
DEPARTMENT OF TRANSPORTATION

ROUTE NO.	SECTION	COUNTY	TOTAL SHEETS	SHEET NO.
F. A. I. 80/94	*	COOK	870	332
FED. ROAD DIST. NO. 1		ILLINOIS	FED. AID PROJECT-	
* (0203.1 & 0312-708W) R3		CONTRACT NO. 62108		



SPECIFICATIONS FOR STANDARD ALUMINUM GRATING
Main Bearing Bars (MBB) shall be 5 mm x 38 mm on 30 mm centers and conform to ASTM B221 Alloy 6061-T6.
Cross bars (CB) shall be 5 mm x 38 mm on 102 mm centers and conform to ASTM B221 Alloy 6063-T5 or 6061-T6.
OR
Aluminum Grating with modified "T" sections for main bearing bars shall meet the following requirements:
Main bars shall conform to ASTM B221 Alloy 6061-T6 and have a minimum section modulus equal to $1.16 \times 10^3 \text{ mm}^3$ per bar, a depth of 38 mm, spaced on 30 mm centers.
Cross bars shall conform to ASTM B221 Alloy 6063-T5 or T-42 and spaced on 100 mm centers.



NUMBER	REVISION	DATE

- Drilling holes in grating may be done in shop or field, based on Contractor's preference and subject to accurate alignment.
- When truss grating must be spliced, use suggested detail or other methods subject to the Engineer's review and approval. Locate splice to avoid interference between cross bars and bolt locations.
- If Handrail Joint present, weld angle to WF(A-N)102 and 6 mm extension bars. (See Base Sheet OSC-A-8(M).)
- ϕ 3 mm x 13 mm x 50 mm welded to handrail posts to protect locations that contact grating.
- Tube to grating gap may vary from 0 to 13mm (Max.) to align walkway, allow for camber, etc. Continuous Truss Grating

Structure Number	Station	A (m)	B (m)	C (m)	D (m)
1C0161094R073.4	19+072 (I-94)	0.213	1.115	2.130	3.395
1C0161094R074.3	20+423 (I-94 EB)	0.213	1.190	2.130	3.470

DESIGNED	PY
CHECKED	DD
DRAWN	LK
CHECKED	DD

OSC-A-7(M) 11/1/2002

ILLINOIS DEPARTMENT OF TRANSPORTATION
I-80/94/US 6 (KINGERY EXPRESSWAY)
**CANTILEVER SIGN STRUCTURES
WALKWAY DETAILS
ALUMINUM TRUSS & STEEL POST**
DATE: JUL 18, 2005
SCALE ---
HNTB

J:\Bureau\p\34562\CAD\Drawings\Signs\Contract\19\cads\as\90124.dgn
08-JUL-2005 15:33