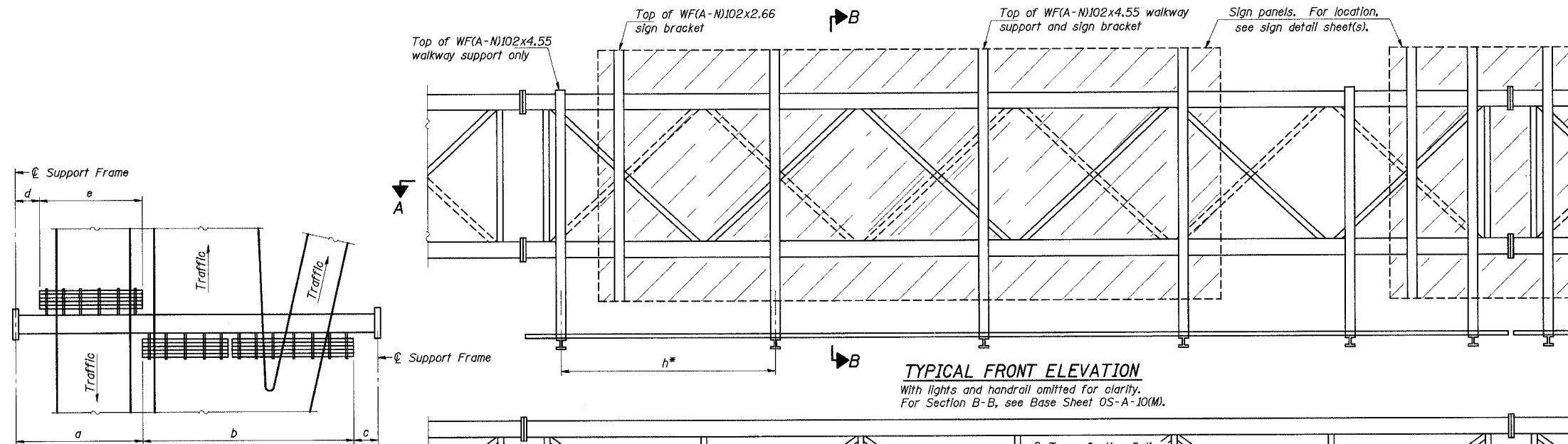


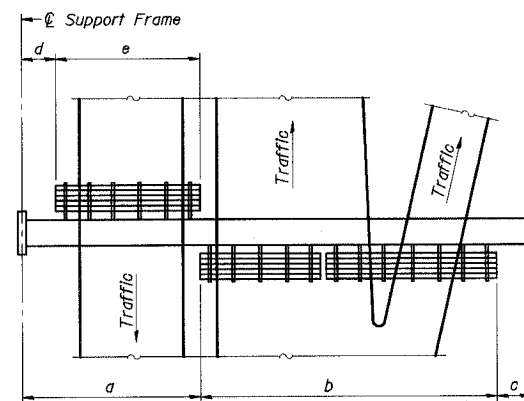
STATE OF ILLINOIS  
DEPARTMENT OF TRANSPORTATION

ROUTE NO.	SECTION	COUNTY	TOTAL SHEETS	SHEET NO.
F. A. I. 80/94		COOK	870	321
FED. ROAD DIST. NO. 1		ILLINOIS	FED. AID PROJECT-	
		0203.1 & 0312-708W R3		CONTRACT NO. 62108



**TYPICAL FRONT ELEVATION**

With lights and handrail omitted for clarity.  
For Section B-B, see Base Sheet OS-A-10(M).



**PLAN WALKWAY AND HANDRAIL SKETCH**  
(Road plan beneath truss varies)

**BRACKET TABLE**

Sign Width		Number Brackets Required
Greater Than	Less Than or Equal To	
	2.45	2
2.45	4.3	3
4.3	6.15	4
6.15	8.0	5
8.0	9.85	6

Notes: \*Space walkway brackets WF(A-N)102x4.55 and sign brackets WF(A-N)102x2.66 for efficiency and within limits shown:

- f = 300 mm maximum, 100 mm minimum (End of sign to  $\phi$  of nearest bracket)
- g = 300 mm maximum, 100 mm minimum (End of walkway grating to  $\phi$  of nearest support bracket)
- h = 1.85 m maximum ( $\phi$  to  $\phi$  sign and/or walkway support brackets, WF(A-N)102x2.66 or WF(A-N)102x4.55)
- k = 50 mm maximum gap between adjacent walkway grating sections and handrail ends

\*\*If walkway bracket at safety chain location is behind sign, add angle to bracket, see Alternate Safety Chain Attachment on Base Sheet OS-A-11(M).

For Details T and W, Section B-B and Grating Splice Details, see Base Sheet OS-A-10(M).  
For Details D, F, G and P and Handrail Splice Details, see Base Sheet OS-A-11(M).

\*\*Alternate angle for safety chain attachment

Standard Aluminum Grating, see Details T and W

Safety Chain Each end

Handrail, see Detail D

Grating Tie-downs

Walkway Grating Splice

Handrail Splice

Light fixture supports. Length as required for lighting fixtures. (If required)

Truss Grating Splice

Walkway and Truss Grating width dimensions are nominal and may vary  $\pm 13$  mm based on available standard widths.

Truss Grating

Walkway Grating

Handrail

Light fixture supports

Truss Grating

Walkway Grating

Handrail

Light fixture supports

Truss Grating

Walkway Grating

Handrail

**SECTION A-A**

Handrail and walkway shall span a minimum of three brackets between splices and/or gap joints. Place all sign and walkway brackets as close to panel points as practical. Grating, handrail and light support splices placed as needed.

Truss grating to facilitate inspection shall run full length (center to center of support frames)  $\pm 305$  mm on overhead trusses. Cost of truss grating is included in "Overhead Sign Structure".

Structure Number	Station	a (m)	b *** (m)	c (m)	d (m)	e (m)	Walkway Grating and Handrail Lengths
ISO161094R073.3	18+871	3.765	16.600	4.865	-	-	16.600
ISO161094R073.5	19+274	4.915	18.400	1.685	-	-	18.400
ISO161094R073.8	19+686	4.865	18.400	1.685	-	-	18.400
ISO165394R	440+757 (IL-394)	5.180	16.600	6.220	-	-	16.600

Notes: all stationing is based on I - 94 unless noted otherwise.  
\*\*\*b dimension shown above is based on g = 200mm and h = 1.80m

NUMBER	REVISION	DATE

DESIGNED	PY
CHECKED	DD
DRAWN	LK
CHECKED	DD

OS-A-9(M) 11/1/2002

ILLINOIS DEPARTMENT OF TRANSPORTATION  
I-80/94/US 6 (KINGERY EXPRESSWAY)

OVERHEAD SIGN STRUCTURES  
ALUMINUM WALKWAY DETAILS

DATE: JUL 18, 2005  
SCALE ---

**HNTB**

J:\Beauchamp\ET\34562\CA00\Ab1\Signs\Contract\9\cadd\aa1\90324e.dgn 08-JUL-2005 15:32