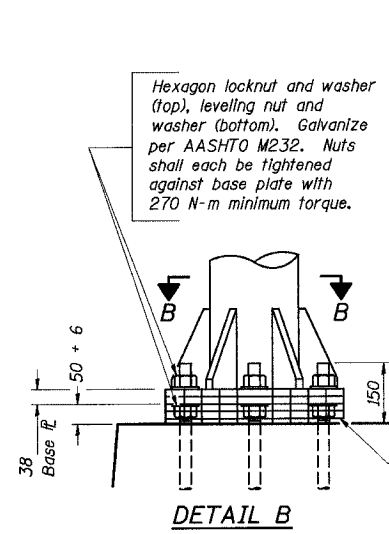
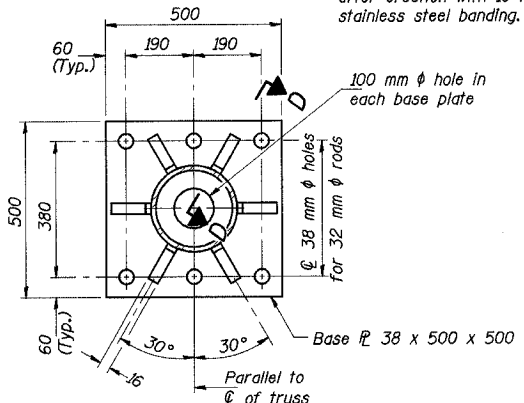


STATE OF ILLINOIS
DEPARTMENT OF TRANSPORTATION

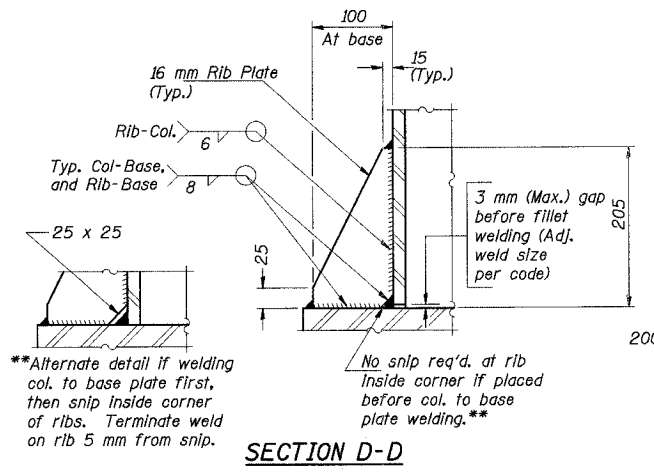
ROUTE NO.	SECTION	COUNTY	TOTAL SHEETS	SHEET NO.
F. A. I. 80/94	*	COOK	870	320
FED. ROAD DIST. NO. 1		ILLINOIS	FED. AID PROJECT-	
* (0203.1 & 0312-708W) R3		CONTRACT NO. 62108		



DETAIL B
Ribs shall be cut to fit slope of pipe.



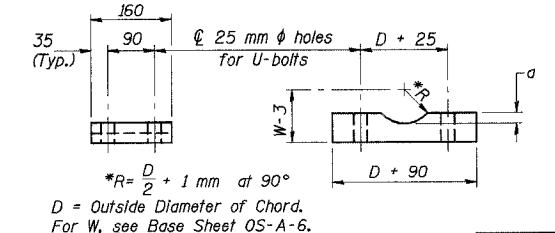
SECTION B-B



SECTION D-D

**Alternate detail if welding col. to base plate first, then snip inside corner of ribs. Terminate weld on rib 5 mm from snip.

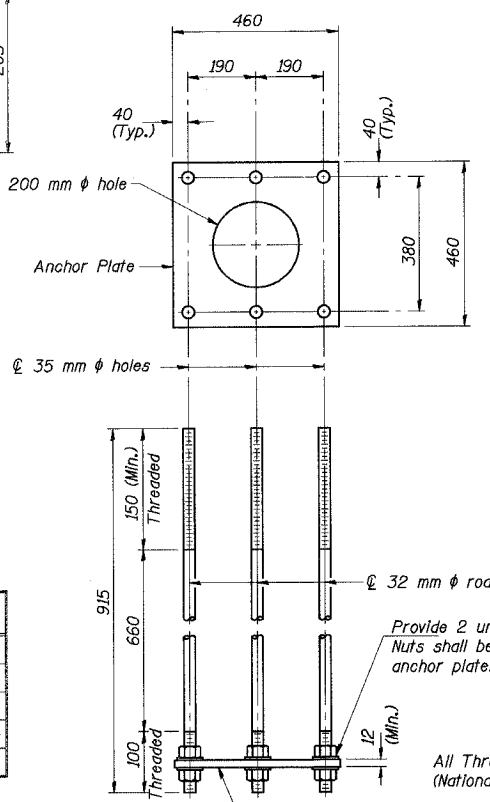
No snip req'd. at rib inside corner if placed before col. to base plate welding.**



SADDLE SHIM DETAIL

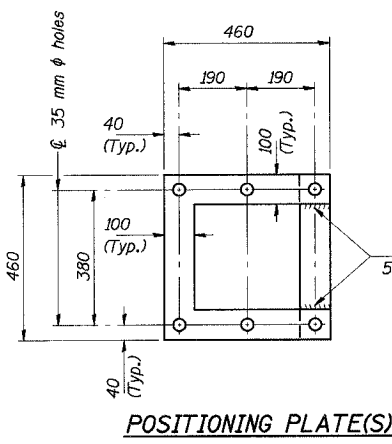
ASTM B26M Alloy 356-F
or
ASTM B209M Alloy 6061-T651
(4 required per sign truss)

Truss Chord Nominal Dia.	a
127	19
140	21
152	22
165	24
178	25



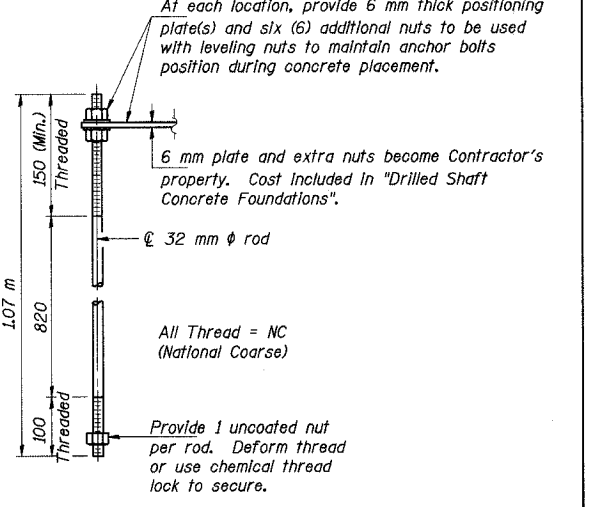
ANCHOR ROD DETAIL
Spread Footing Foundation

Anchor rods shall conform to AASHTO M314M Grade 250 or 380 (36 or 55) and meet Charpy V-Notch (CVN) energy of 20 J at 5°C. Galvanize upper 305 mm per AASHTO M232. No welding shall be permitted on rods.



POSITIONING PLATE(S)

Optionally may use four (4) separate bars. Weld to maintain perpendicularity.



ANCHOR ROD DETAIL
Drilled Shaft Foundation

ILLINOIS DEPARTMENT OF TRANSPORTATION
I-80/94/US 6 (KINGERY EXPRESSWAY)
OVERHEAD SIGN STRUCTURES
SUPPORT FRAME DETAILS
ALUMINUM TRUSS

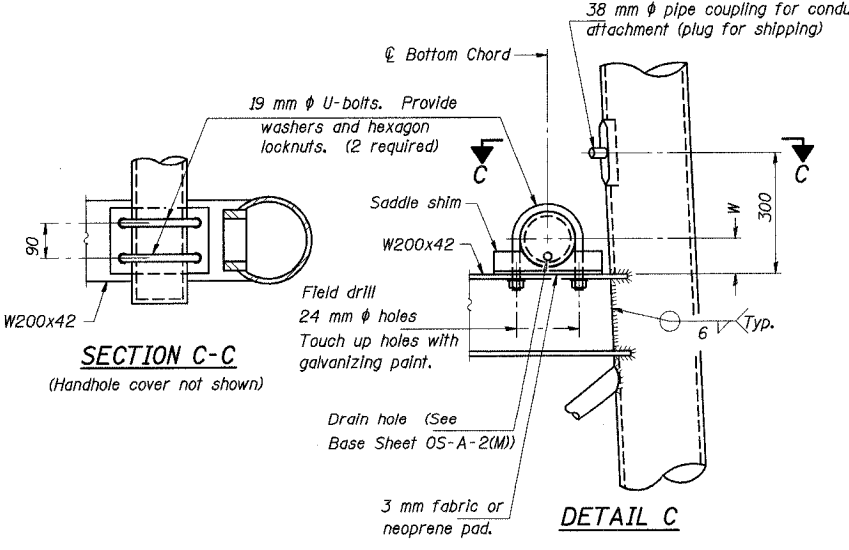
DATE: JUL 18, 2005
SCALE ---

HNTB

NUMBER	REVISION	DATE

DESIGNED	PY
CHECKED	DD
DRAWN	LK
CHECKED	DD

OS-A-6A(M) 11/1/2002



SECTION C-C
(Handhole cover not shown)

DETAIL C

DN 250 PIPE SUPPORT FRAME DETAILS

J:\Beauchamp\EA\34562\CADD\Ab1\Signs\Contract\cadd\as1\901204.dgn 08-JUL-2005 15:32