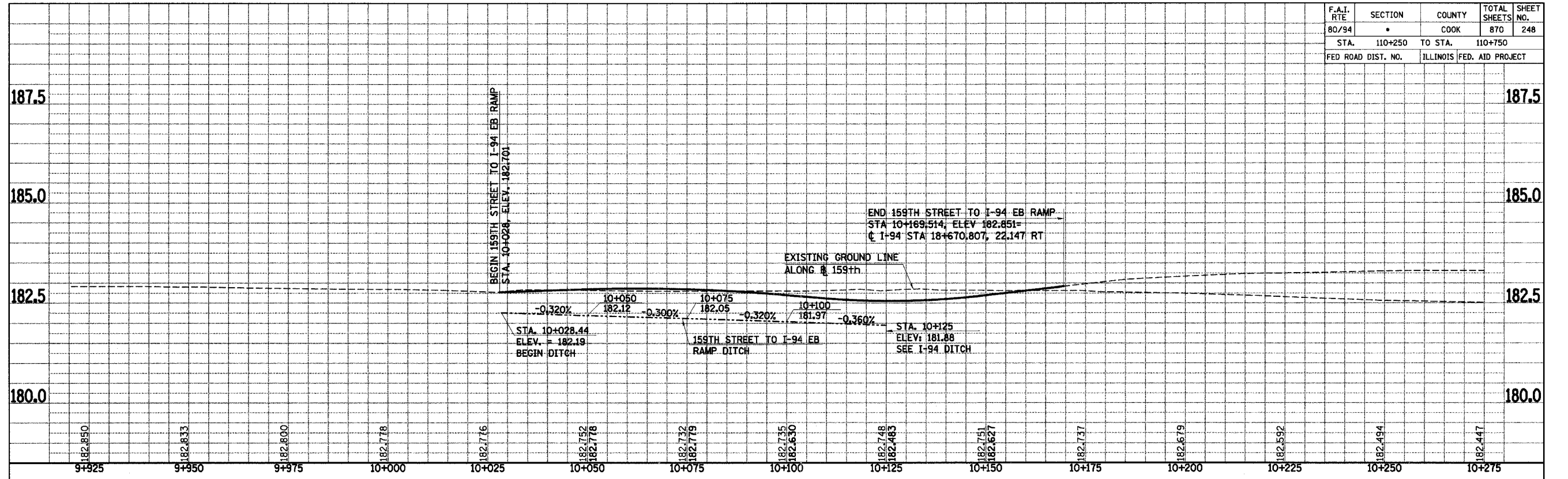


F.A.I. RTE	SECTION	COUNTY	TOTAL SHEETS	SHEET NO.
80/94	•	COOK	870	248
STA. 110+250		TO STA. 110+750		
FED ROAD DIST. NO.		ILLINOIS		FED. AID PROJECT



REVISIONS	
NAME	DATE

ILLINOIS DEPARTMENT OF TRANSPORTATION
 I-94 EAST BOUND / IL 394 SOUTH BOUND
DRAINAGE PROFILE
159th STREET ON RAMP
STA. 10+028 TO STA. 10+169.807

HORIZ SCALE: 1 : 500
 VERT SCALE: 1 : 50
 DATE: JULY 18, 2005

DRAWN BY: KMF
 CHECKED BY: MAM

