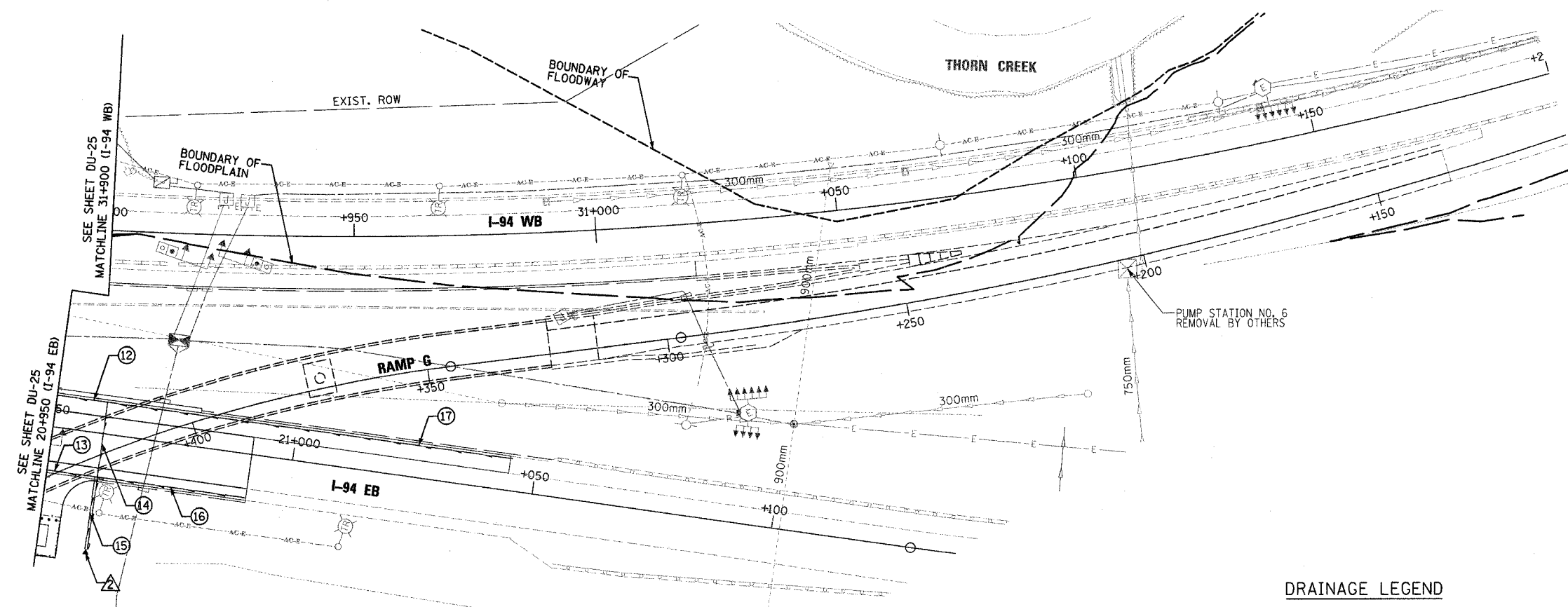
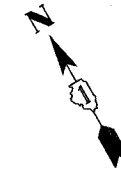


* (0203.1 & 0312-708W) R-3		CONTRACT #62108	
F.A.I. RTE.	SECTION	COUNTY	TOTAL SHEETS
80/394	*	COOK	870
STA. 20+950.00		TO STA. 20+991.47	
FED. ROAD DIST. NO. 1		ILLINOIS FED. AID PROJECT	



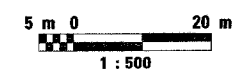
SEE SHEET DU-25
MATCHLINE 31+900 (I-94 WB)

SEE SHEET DU-25
MATCHLINE 20+950 (I-94 EB)

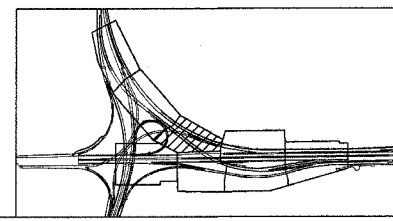
- ⑫ 151.0m - PIPE UNDERDRAINS 150mm
- ⑬ 191.5m - PIPE UNDERDRAINS 150mm
- ⑭ 30.9m - PIPE UNDERDRAINS (SPECIAL) 150mm
- ⑮ 15.1m - PIPE UNDERDRAINS (SPECIAL) 150mm
- ⑯ 31.0m - PIPE UNDERDRAINS 150mm
- ⑰ 84.5m - PIPE UNDERDRAINS 150mm
- △ CONCRETE HEADWALL FOR PIPE DRAINS
STATION 20+960.5, 24.15 RT

DRAINAGE LEGEND

- (XXX) PROPOSED DRAINAGE STRUCTURE
- (XXX) PROPOSED STORM SEWER
- (X) PROPOSED PIPE UNDERDRAINS
- △ PROPOSED CONCRETE HEADWALL FOR PIPE DRAINS
- ▨ PROPOSED RIPRAP, CLASS 4A
- ☐ PROPOSED DR STR T1 SP 2T20F&G
- PROPOSED CATCH BASIN
- PROPOSED MANHOLES
- ◄ PROPOSED END SECTION



DU-26



REVISIONS	
NAME	DATE

ILLINOIS DEPARTMENT OF TRANSPORTATION
I-94 EASTBOUND / IL 394 SOUTHBOUND

PROPOSED DRAINAGE PLAN
IL-94 EB

DATE: JULY 18, 2005

DRAWN BY: AAS
CHECKED BY: RCH

McDonough Associates Inc.
Engineers / Architects