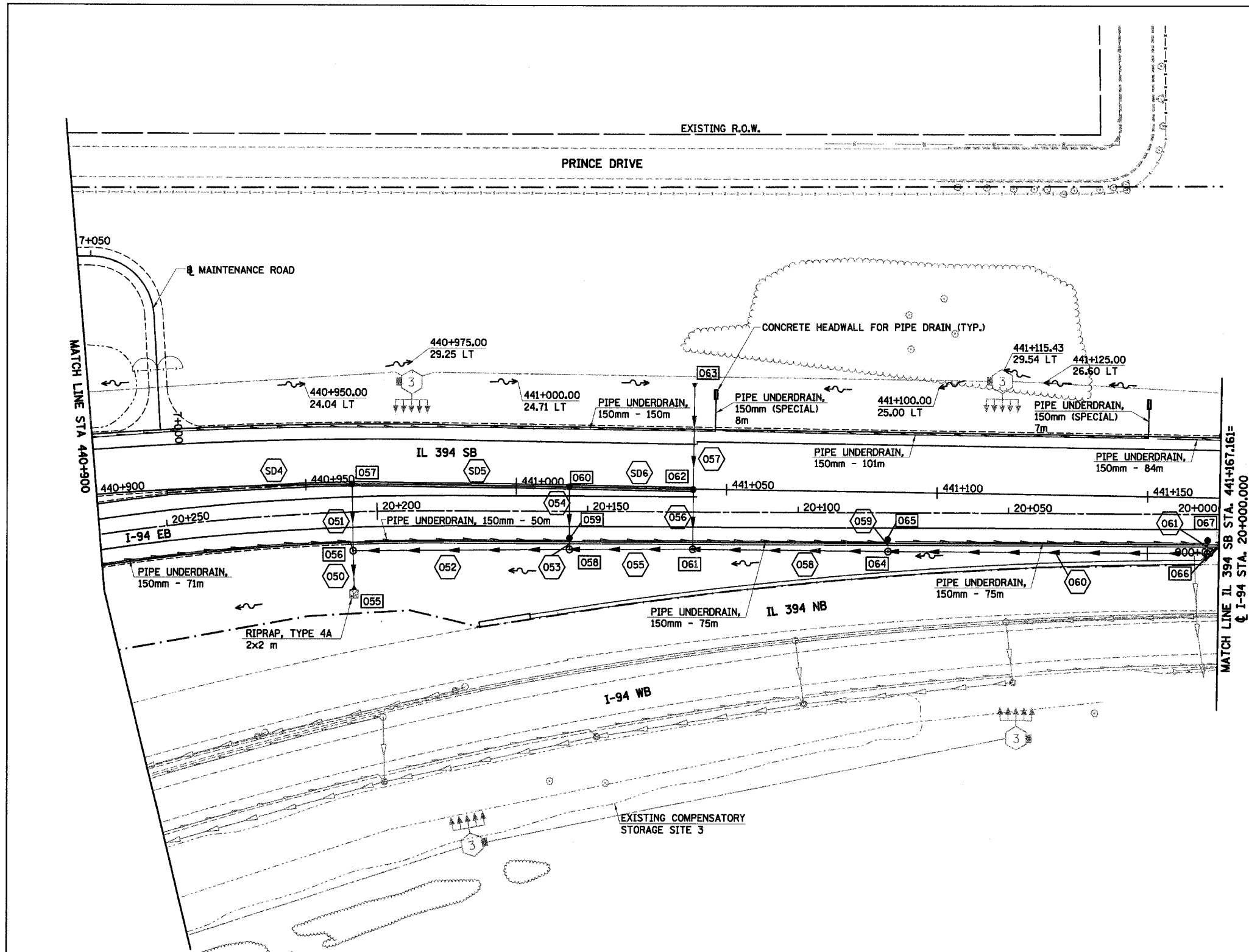
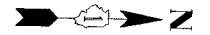


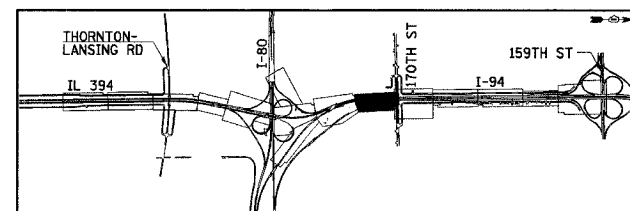
F.A.I. RTE	SECTION	COUNTY	TOTAL SHEETS	SHEET NO.
80/94		COOK	870	233
STA. 440+900 TO STA. 441+167.161		ILLINOIS FED. AID PROJECT		



NOTES:

1. ALL STATIONING AND OFFSET MEASUREMENTS OFF @ IL 394 SB UNLESS OTHERWISE NOTED.
2. ALL DIMENSIONS ARE IN METERS (m) UNLESS OTHERWISE NOTED.
3. ALL PIPE SIZES ARE IN MILLIMETERS (mm) UNLESS OTHERWISE NOTED.

PROPOSED



REVISIONS	
NAME	DATE

ILLINOIS DEPARTMENT OF TRANSPORTATION
I-94 EAST BOUND / IL 394 SOUTH BOUND

DRAINAGE AND UTILITIES
IL 394 SB
STA. 440+900 TO STA. 441+167.161

HORIZ SCALE: 1:500
VERT SCALE: 1:500
DATE: JULY 18, 2005

DRAWN BY: JPH
CHECKED BY: MAM

HNTB