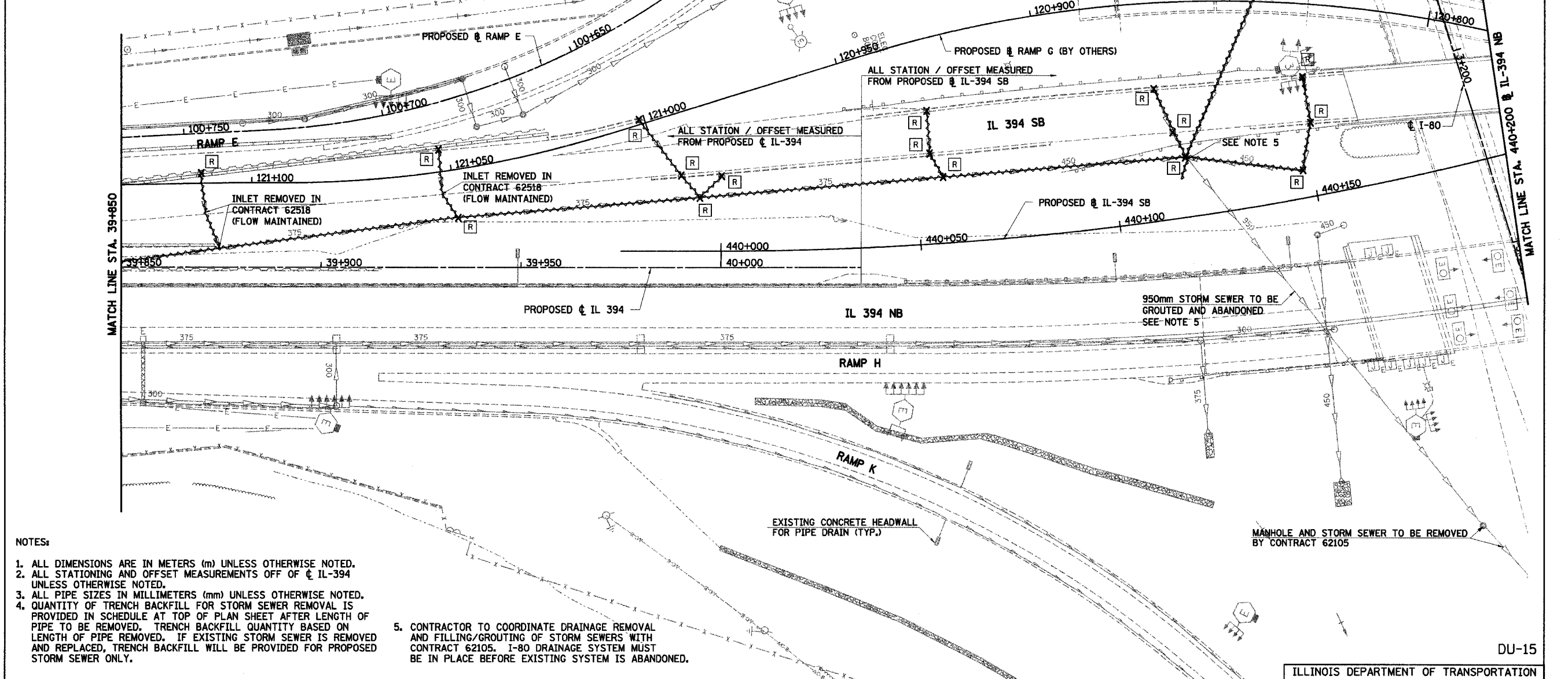


F.A.I. RTE	SECTION	COUNTY	TOTAL SHEETS	SHEET NO.
80/94	*	COOK	870	226
STA. 39+825 TO STA. 40+200		40+200		
FED ROAD DIST. NO.	ILLINOIS	FED. AID PROJECT		

- REMOVING INLETS**
- 39+869.8, 23.5 LT
 - 39+929.3, 29.5 LT
 - 39+934.3, 12.5 LT
 - 39+979.4, 36.8 LT
 - 39+990.0, 23.1 LT
 - 39+994.6, 17.6 LT
 - 40+000.0, 22.9 LT
 - 440+053.6, 33.2 LT (IL394SB)
 - 440+053.7, 22.5 LT (IL394SB)
 - 440+056.7, 16.6 LT (IL394SB)
 - 440+147.4, 6.9 LT (IL394SB)
 - 440+151.6, 18.2 LT (IL394SB)
 - 440+151.9, 29.8 LT (IL394SB)
- REMOVING CATCH BASINS**
- 440+113.2, 32.6 LT (IL394SB)
 - 440+116.3, 21.4 LT (IL394SB)
- REMOVING MANHOLES**
- 440+118.8, 15.0 LT (IL394SB)
- STORM SEWER REMOVAL - 300mm**
- STA. 39+869.77 TO 39+870.91 - 9.8m (7.9 cu m)
 - STA. 39+870.91 TO 39+874.56 - 9.4m (7.6 cu m)
 - STA. 39+929.33 TO 39+930.68 - 11.7m (9.4 cu m)
 - STA. 39+930.68 TO 39+934.29 - 7.0m (5.7 cu m)
 - STA. 39+979.38 TO 39+990.00 - 17.3m (13.9 cu m)
 - STA. 39+990.00 TO 39+994.62 - 7.2m (5.8 cu m)
 - STA. 40+000.15 TO 39+994.62 - 7.6m (6.1 cu m)
- STORM SEWER TO BE GROUTED AND ABANDONED - 950mm**
- STA. 440+053.56 TO 440+053.70 - 10.7m (8.6 cu m) (IL394SB)
 - STA. 440+053.70 TO 440+056.72 - 6.6m (5.3 cu m) (IL394SB)
 - STA. 440+113.15 TO 440+116.32 - 11.7m (9.4 cu m) (IL394SB)
 - STA. 440+116.32 TO 440+118.75 - 6.8m (5.5 cu m) (IL394SB)
 - STA. 440+154.77 TO 440+118.75 - 63.0m (50.6 cu m) (IL394SB)
 - STA. 440+151.88 TO 440+151.57 - 11.5m (9.3 cu m) (IL394SB)
 - STA. 440+151.57 TO 440+147.40 - 12.0m (9.7 cu m) (IL394SB)
- STORM SEWER REMOVAL - 450mm**
- STA. 440+056.715 TO 440+118.75 - 60.8m (76.4 cu m) (IL394SB)
 - STA. 440+118+75 TO 440+147.40 - 29.4m (37.0 cu m) (IL394SB)
- STORM SEWER REMOVAL - 375mm**
- STA. 39+850.00 TO 39+874.56 - 25.0m (25.7 cu m)
 - STA. 39+874.56 TO 39+934.29 - 60.2m (61.7 cu m)
 - STA. 39+934.29 TO 39+994.62 - 60.5m (62.0 cu m)
 - STA. 39+994.62 TO 440+056.72 - 61.1m (62.7 cu m) (IL394SB)

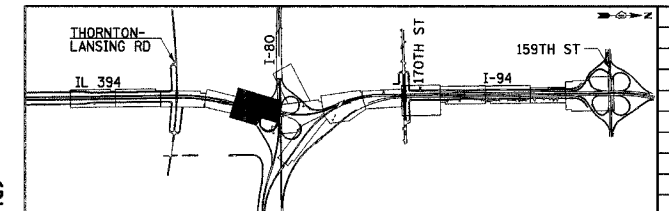


NOTES:

- ALL DIMENSIONS ARE IN METERS (m) UNLESS OTHERWISE NOTED.
- ALL STATIONING AND OFFSET MEASUREMENTS OFF OF C IL-394 UNLESS OTHERWISE NOTED.
- ALL PIPE SIZES IN MILLIMETERS (mm) UNLESS OTHERWISE NOTED.
- QUANTITY OF TRENCH BACKFILL FOR STORM SEWER REMOVAL IS PROVIDED IN SCHEDULE AT TOP OF PLAN SHEET AFTER LENGTH OF PIPE TO BE REMOVED. TRENCH BACKFILL QUANTITY BASED ON LENGTH OF PIPE REMOVED. IF EXISTING STORM SEWER IS REMOVED AND REPLACED, TRENCH BACKFILL WILL BE PROVIDED FOR PROPOSED STORM SEWER ONLY.
- CONTRACTOR TO COORDINATE DRAINAGE REMOVAL AND FILLING/GROUTING OF STORM SEWERS WITH CONTRACT 62105. I-80 DRAINAGE SYSTEM MUST BE IN PLACE BEFORE EXISTING SYSTEM IS ABANDONED.

LEGEND - EXISTING

○	EXISTING INLET	REC	EXISTING DRAINAGE STRUCTURE RECONSTRUCTED
○	EXISTING CATCH BASIN	A	EXISTING FRAMES AND GRATES ADJUSTMENT
○	EXISTING MANHOLE	C	EXISTING DRAINAGE STRUCTURES TO BE CLEANED
□	EXISTING MEDIAN DRAINAGE STRUCTURE	---	EXISTING STORM SEWER TO BE REMOVED
X [R]	EXISTING DRAINAGE STRUCTURE REMOVAL	---	EXISTING STORM SEWER
[ADJ]	EXISTING DRAINAGE STRUCTURE ADJUSTMENT	---	EXISTING SLOTTED DRAIN
---	EXISTING DITCH	---	EXISTING PIPE UNDERDRAIN



REVISIONS	
NAME	DATE

ILLINOIS DEPARTMENT OF TRANSPORTATION
 I-94 EAST BOUND / IL 394 SOUTH BOUND
DRAINAGE AND UTILITIES
IL 394
STA. 39+850 (C IL 394) TO
STA. 440+200 (C IL 394 SB)
 HORIZ SCALE: 1:500
 VERT SCALE: 1:500
 DATE: JULY 18, 2005
 DRAWN BY: JPH
 CHECKED BY: MAM

HNTB