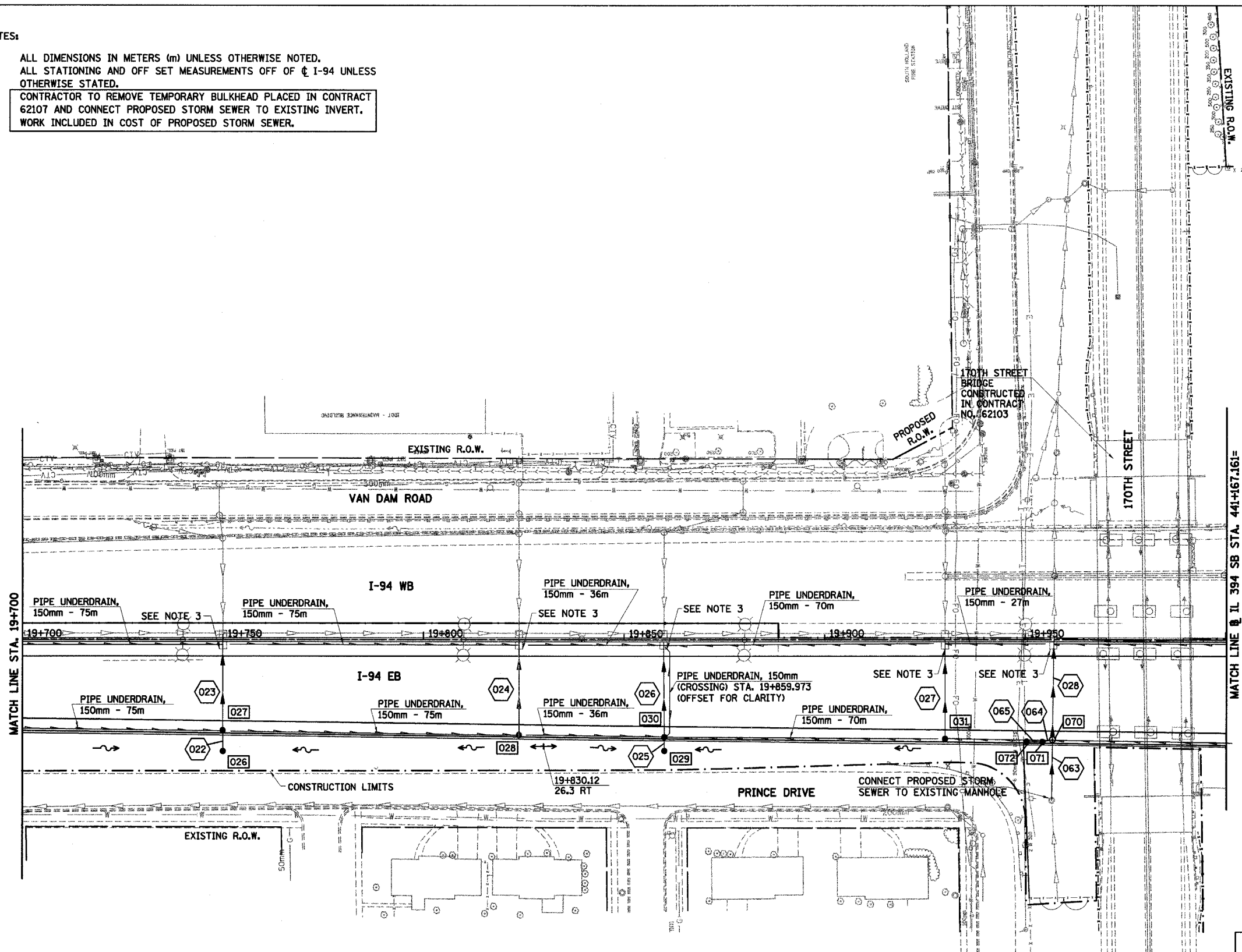


F.A.I. RTE	SECTION	COUNTY	TOTAL SHEETS	SHEET NO.
80/94	*	COOK	870	218
STA. 19+700		TO STA. 20+000		
FED ROAD DIST. NO.		ILLINOIS FED. AID PROJECT		

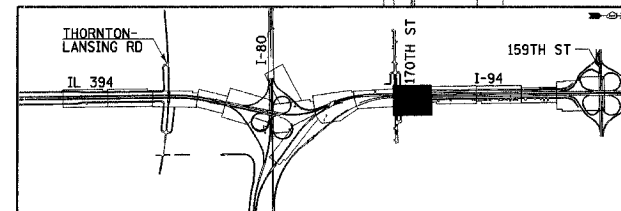
NOTES:

1. ALL DIMENSIONS IN METERS (m) UNLESS OTHERWISE NOTED.
2. ALL STATIONING AND OFF SET MEASUREMENTS OFF OF ϕ I-94 UNLESS OTHERWISE STATED.
3. CONTRACTOR TO REMOVE TEMPORARY BULKHEAD PLACED IN CONTRACT 62107 AND CONNECT PROPOSED STORM SEWER TO EXISTING INVERT. WORK INCLUDED IN COST OF PROPOSED STORM SEWER.



LEGEND - PROPOSED

- | | | | |
|--|------------------------|--|---|
| | PROPOSED STORM SEWER | | PROPOSED INLET |
| | PROPOSED SUMMIT | | PROPOSED CATCH BASIN |
| | PROPOSED DITCH | | PROPOSED MANHOLE |
| | PROPOSED SLOTTED DRAIN | | MEDIAN DRAINAGE STRUCTURE |
| | PROPOSED SWALE | | PRECAST REINFORCED CONC. FLARED END SECTION |



REVISIONS	
NAME	DATE

ILLINOIS DEPARTMENT OF TRANSPORTATION
I-94 EAST BOUND / IL 394 SOUTH BOUND

DRAINAGE AND UTILITIES
I-94
STA. 19+700 TO STA. 20+000

HORIZ SCALE: 1:500
VERT SCALE: 1:500
DATE: JULY 18, 2005

DRAWN BY: JPH
CHECKED BY: MAM

HNTB