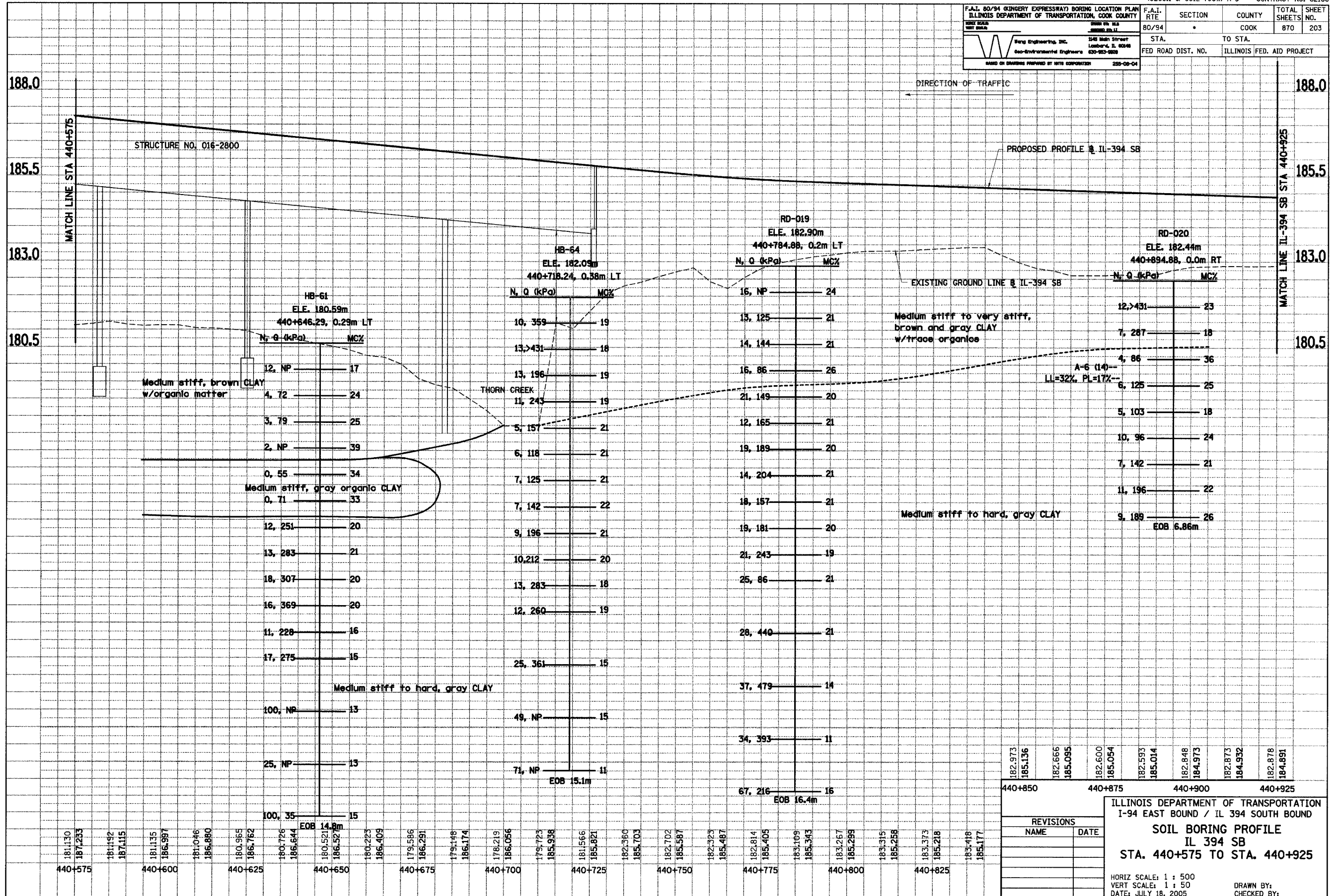


F.A.I. 80/94 (KINGERY EXPRESSWAY) BORING LOCATION PLAN ILLINOIS DEPARTMENT OF TRANSPORTATION, COOK COUNTY	F.A.I. RTE 80/94	SECTION *	COUNTY COOK	TOTAL SHEETS 870	SHEET NO. 203
 Wang Engineering, Inc. 1548 Main Street Lombard, IL 60148 630-953-9898 BASED ON DRAWINGS PROVIDED BY ITRB CORPORATION 220-08-04		STA. TO STA. FED. ROAD DIST. NO. ILLINOIS FED. AID PROJECT			



182.973	185.136	182.666	185.095	182.600	185.054	182.593	185.014	182.848	184.973	182.873	184.932	182.878	184.891
440+850	440+875	440+900	440+925										

REVISIONS	
NAME	DATE

J:\34562\CADD\from.Wang\4_Contr\19\Updated\394_440575_440925.dgn
kfox 11-JUL-2005 09:29