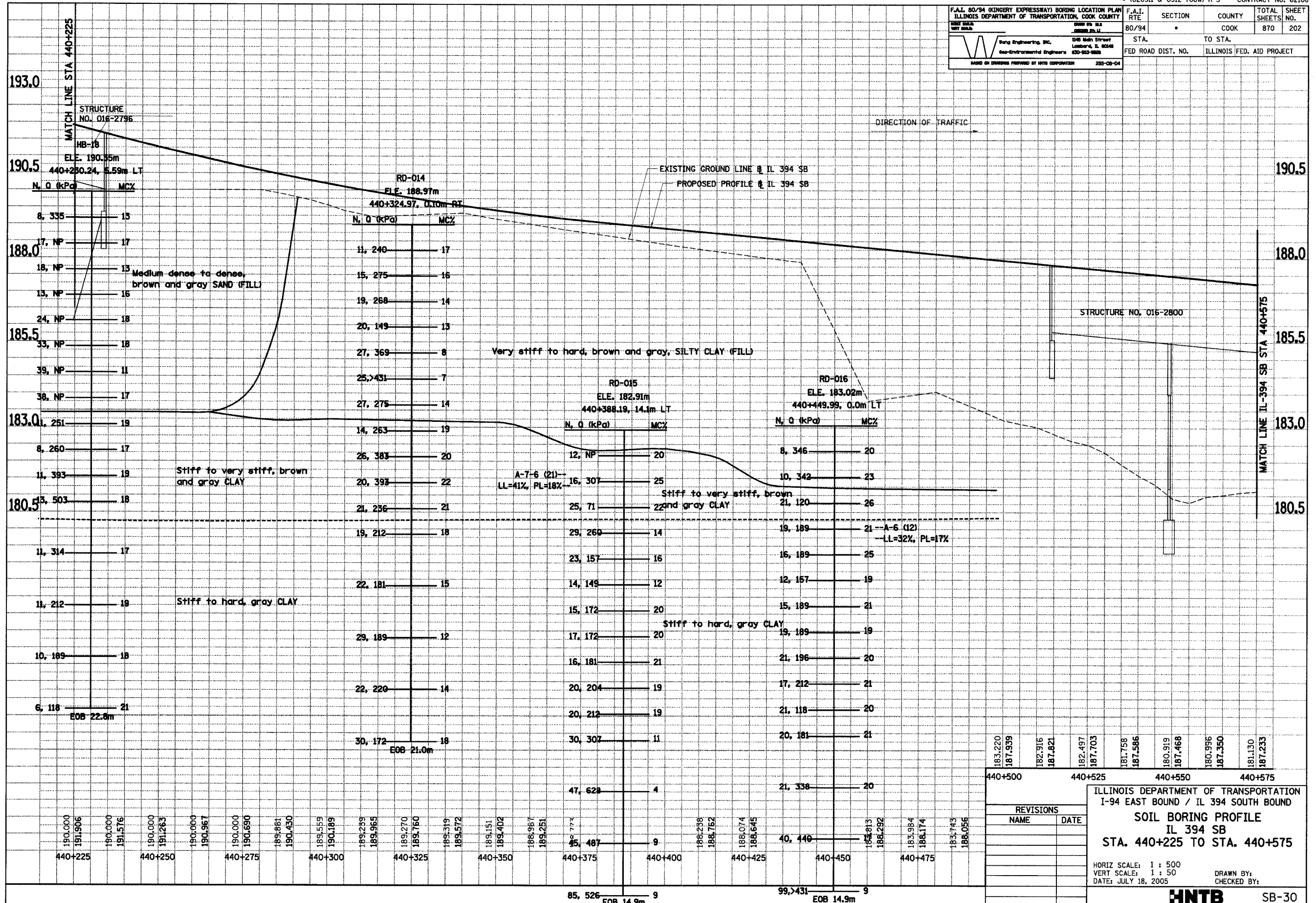


F.A.I. 80/94 (KINGERY EXPRESSWAY) BORING LOCATION PLAN ILLINOIS DEPARTMENT OF TRANSPORTATION, COOK COUNTY		F.A.I. RTE	SECTION	COUNTY	TOTAL SHEETS	SHEET NO.
80/94		80/94	*	COOK	870	202
Fong Engineering, Inc. Geo-Environmental Engineers 345 Main Street Lombard, IL 60148 (630) 953-8800		STA.		TO STA.		
MADE ON DRAWING PROVIDED BY HNTB CORPORATION 255-08-04		FED ROAD DIST. NO.		ILLINOIS FED. AID PROJECT		



J:\34562\CADD\from_Wang\4_Contr19\Updated\394_440225_440575.dgn
kfox 11-JUL-2005 09:29

183.220	187.939	182.916	187.821	182.497	187.703	181.758	187.586	180.919	187.468	180.996	187.350	181.130	187.233
440+500	440+525	440+550	440+575										
ILLINOIS DEPARTMENT OF TRANSPORTATION I-94 EAST BOUND / IL 394 SOUTH BOUND													
SOIL BORING PROFILE IL 394 SB STA. 440+225 TO STA. 440+575													
HORIZONTAL SCALE: 1 : 500 VERTICAL SCALE: 1 : 50 DATE: JULY 18, 2005													
DRAWN BY:												CHECKED BY:	
HNTB												SB-30	