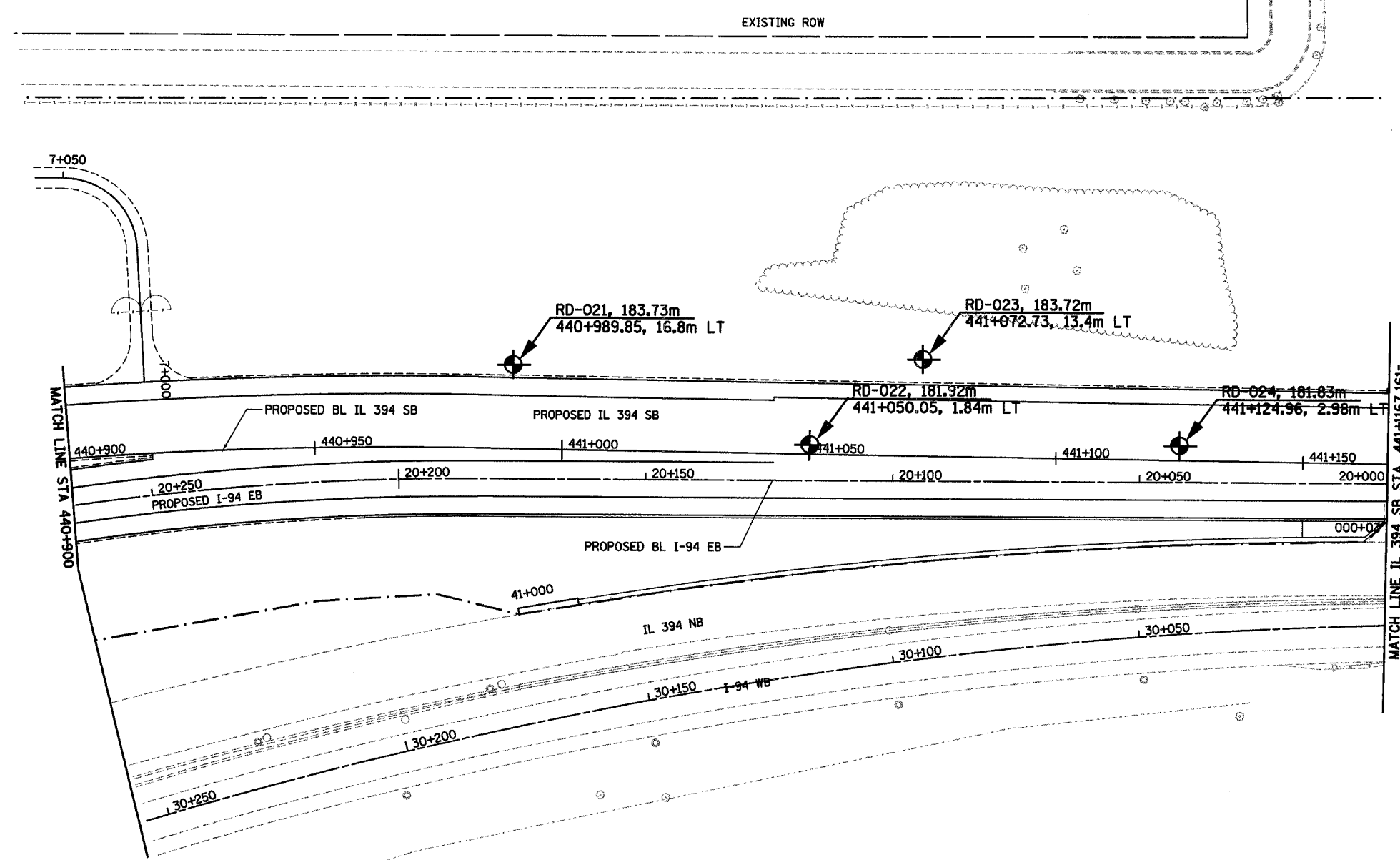


F.A.I. 80/94 (KINGERY EXPRESSWAY) BORING LOCATION PLAN ILLINOIS DEPARTMENT OF TRANSPORTATION, COOK COUNTY		F.A.I. RTE	SECTION	COUNTY	TOTAL SHEETS	SHEET NO.
DRAWN BY: WJL CHECKED BY: LK		80/94	*	COOK	870	194
Wang Engineering, Inc. Soil-Environmental Engineers 345 Main Street Lombard, IL 60146 630-957-8888		STA.		TO STA.		
BASED ON DRAWINGS PREPARED BY BMTS CORPORATION 255-09-04		FED ROAD DIST. NO.		ILLINOIS FED. AID PROJECT		

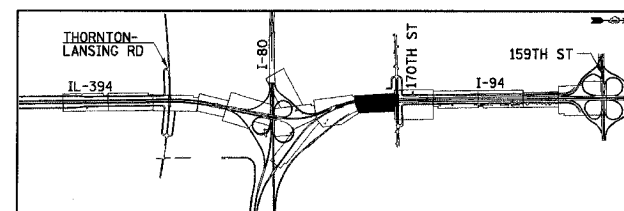


**NOTES:**

1. ALL STATIONING AND OFFSET MEASUREMENTS OFF @ IL 394 SB UNLESS OTHERWISE NOTED
2. ALL DIMENSIONS ARE IN METERS (m) UNLESS OTHERWISE NOTED.

SB-22

**PROPOSED**



REVISIONS	
NAME	DATE

ILLINOIS DEPARTMENT OF TRANSPORTATION  
I-94 EAST BOUND / IL 394 SOUTH BOUND

**SOIL BORING PLAN**  
**IL 394 SB**  
**STA. 440+900 TO STA. 441+167.161**

HORIZ SCALE: 1:500  
VERT SCALE: 1:500  
DATE: JULY 18, 2005

DRAWN BY: \_\_\_\_\_  
CHECKED BY: \_\_\_\_\_