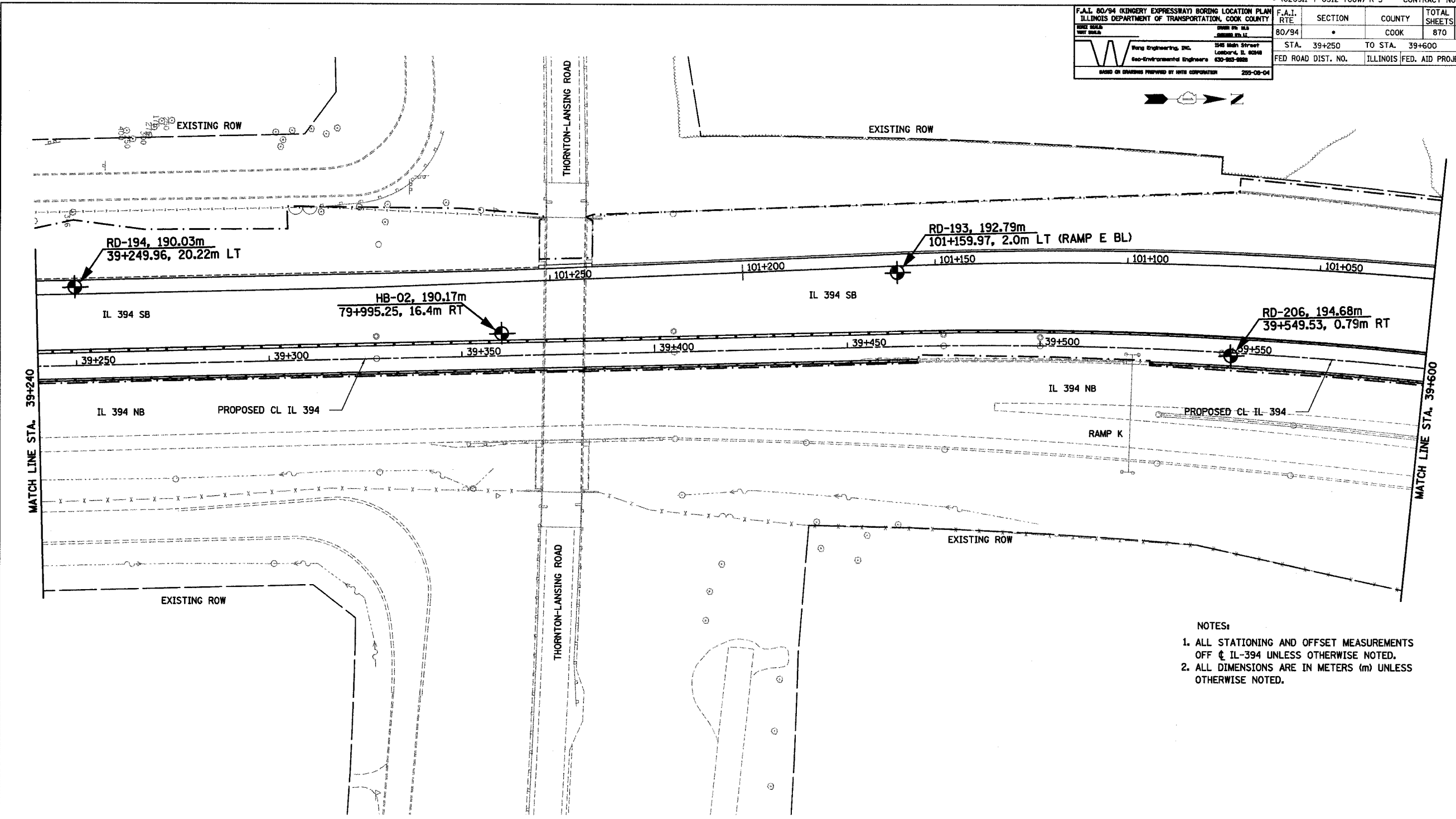


F.A.I. 80/94 (KINGERY EXPRESSWAY) BORING LOCATION PLAN ILLINOIS DEPARTMENT OF TRANSPORTATION, COOK COUNTY		F.A.I. RTE	SECTION	COUNTY	TOTAL SHEETS	SHEET NO.
80/94		*		COOK	870	184
STA. 39+250		TO STA. 39+600		FED ROAD DIST. NO. ILLINOIS FED. AID PROJECT		

Wang Engineering, Inc.
346 Main Street
Lombard, IL 60148
630-953-8888
Geo-Environmental Engineers
255-08-04



- NOTES:
1. ALL STATIONING AND OFFSET MEASUREMENTS OFF ϕ IL-394 UNLESS OTHERWISE NOTED.
 2. ALL DIMENSIONS ARE IN METERS (m) UNLESS OTHERWISE NOTED.

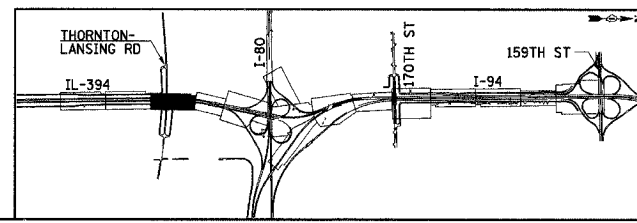
SB-12

ILLINOIS DEPARTMENT OF TRANSPORTATION
I-94 EAST BOUND / IL 394 SOUTH BOUND

SOIL BORING PLAN
IL 394
STA. 39+240 TO STA. 39+600

HORIZ SCALE: 1:500
VERT SCALE:
DATE: JULY 18, 2005

DRAWN BY:
CHECKED BY:



REVISIONS	
NAME	DATE

PROPOSED