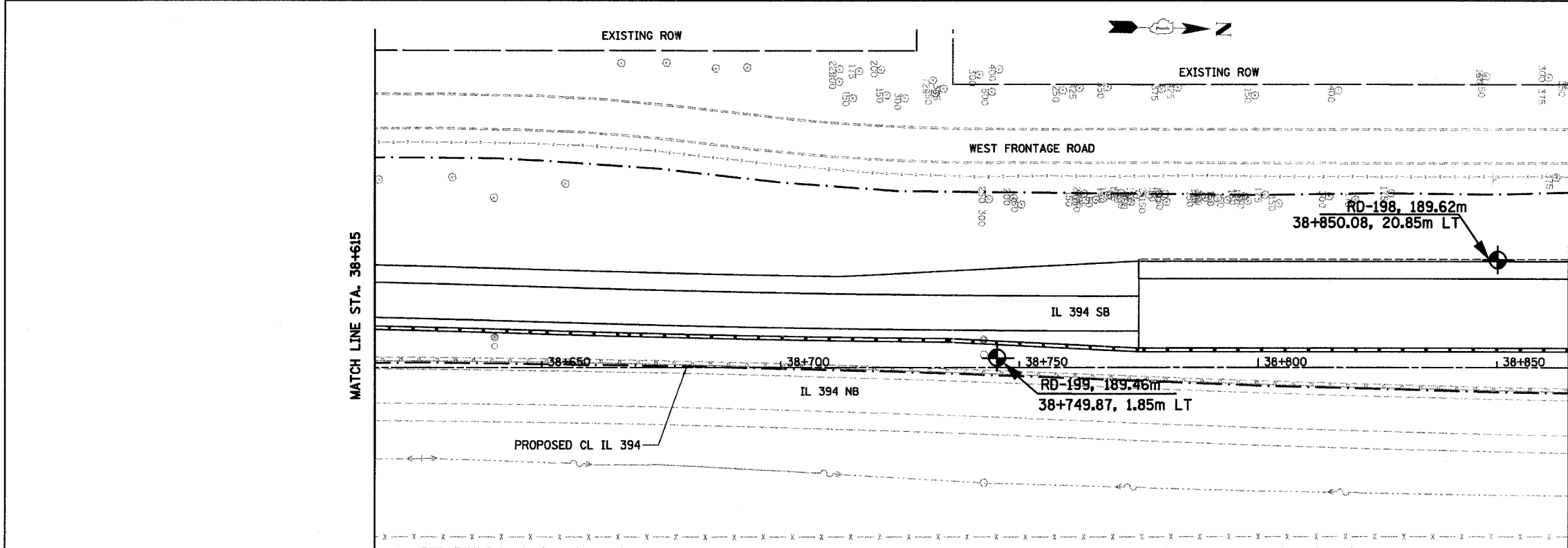
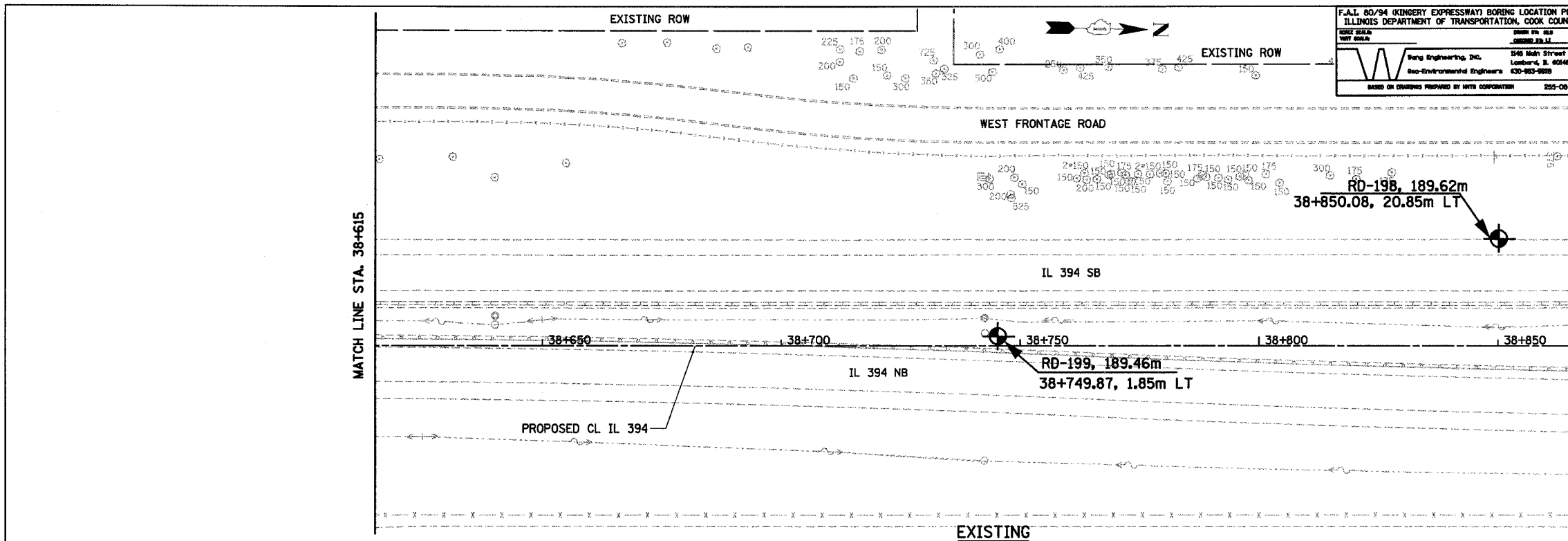
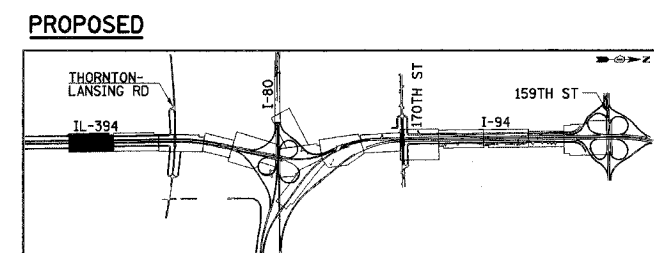


F.A.I. 80/94 (KINGERY EXPRESSWAY) BORING LOCATION PLAN ILLINOIS DEPARTMENT OF TRANSPORTATION, COOK COUNTY		F.A.I. RTE	SECTION	COUNTY	TOTAL SHEETS	SHEET NO.
DATE PLOTTED: 07/18/05 PLOT SCALE: 1"=100'		80/94	*	COOK	870	181
Wang Engineering, Inc. Geo-Environmental Engineers 430-983-9888 240 Main Street Lombard, IL 60148 BASED ON DRAWINGS PROVIDED BY IRTA CORPORATION 205-09-04		STA.	38+500	TO STA.	38+875	
		FED ROAD DIST. NO.	ILLINOIS	FED. AID PROJECT		



- NOTES:
1. ALL STATIONING AND OFFSET MEASUREMENTS OFF ϕ IL 394 UNLESS OTHERWISE NOTED
 2. ALL DIMENSIONS ARE IN METERS (m) UNLESS OTHERWISE NOTED.



REVISIONS	
NAME	DATE

ILLINOIS DEPARTMENT OF TRANSPORTATION
I-94 EAST BOUND / IL 394 SOUTH BOUND

SOIL BORING PLAN
IL 394
STA. 38+615 TO STA. 38+865

HORIZ SCALE: 1:500
VERT SCALE: 1"=10'
DATE: JULY 18, 2005

DRAWN BY:
CHECKED BY: