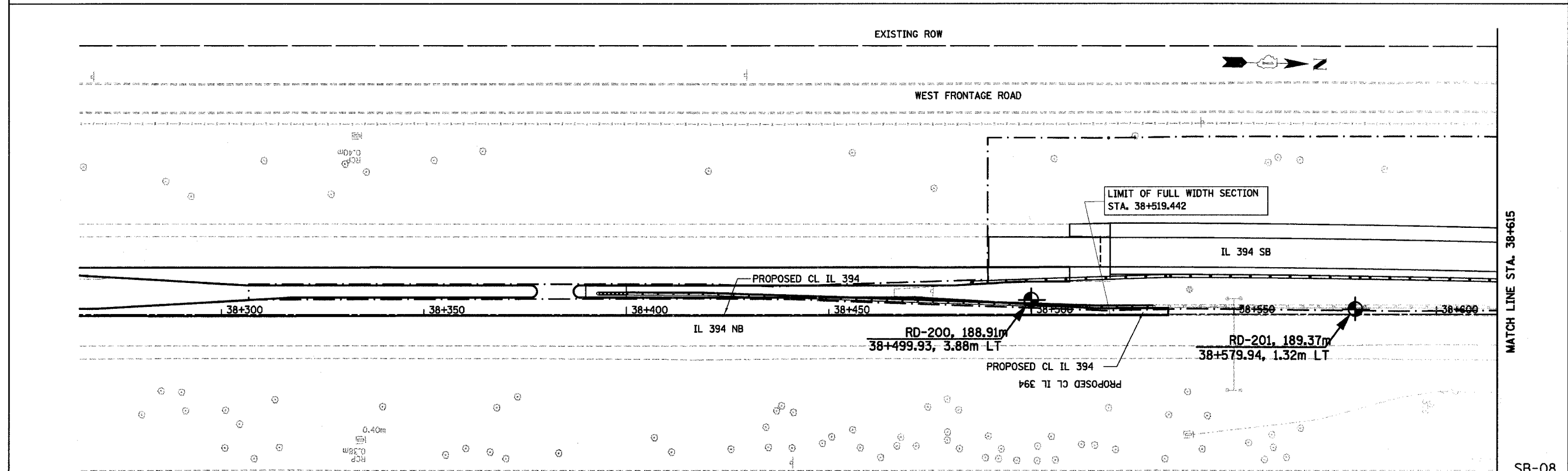
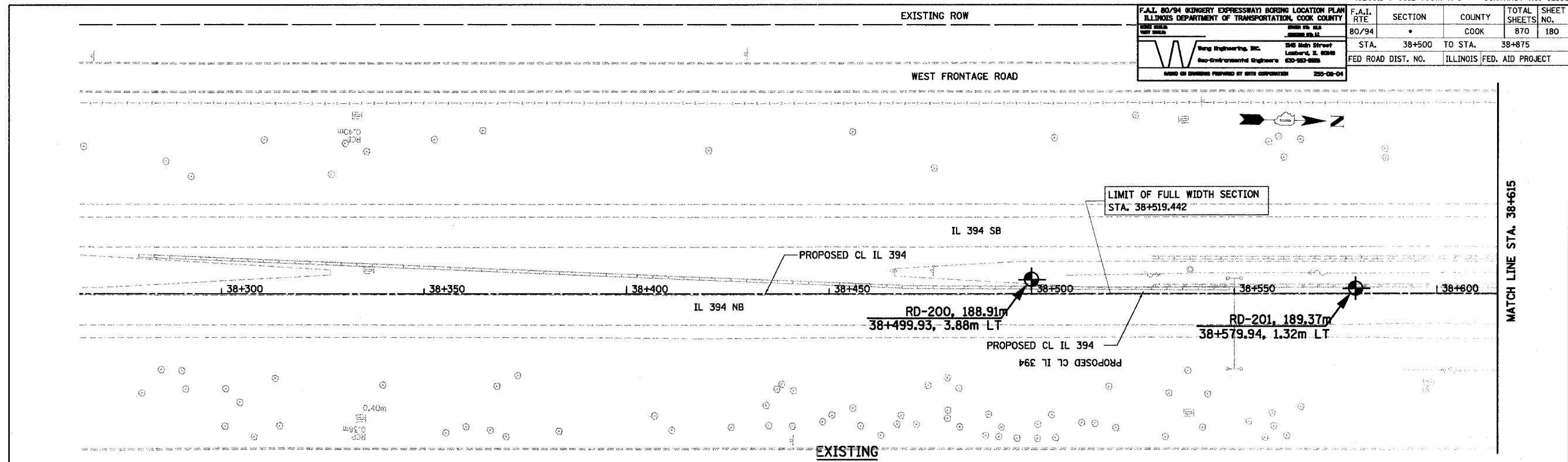
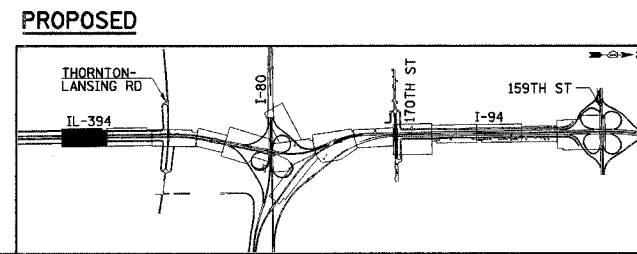


F.A.I. 80/94 (KINGERY EXPRESSWAY) BORING LOCATION PLAN ILLINOIS DEPARTMENT OF TRANSPORTATION, COOK COUNTY		F.A.I. RTE	SECTION	COUNTY	TOTAL SHEETS	SHEET NO.
King Engineering, Inc. 345 Main Street Lombard, IL 60148 630-953-8300		80/94	*	COOK	870	180
MADE OR DERIVED FROM BY THIS CORPORATION 200-08-04		STA.	38+500	TO STA.	38+875	
		FED ROAD DIST. NO.		ILLINOIS FED. AID PROJECT		



- NOTES:**
1. ALL STATIONING AND OFFSET MEASUREMENTS OFF  $\phi$  IL 394 UNLESS OTHERWISE NOTED
  2. ALL DIMENSIONS ARE IN METERS (m) UNLESS OTHERWISE NOTED.



REVISIONS	
NAME	DATE

ILLINOIS DEPARTMENT OF TRANSPORTATION  
I-94 EAST BOUND / IL 394 SOUTH BOUND

**SOIL BORING PLAN**  
**IL 394**  
**STA. 38+265 TO STA. 38+615**

HORIZ SCALE: 1:500  
VERT SCALE: 1:500  
DATE: JULY 18, 2005

DRAWN BY:  
CHECKED BY: