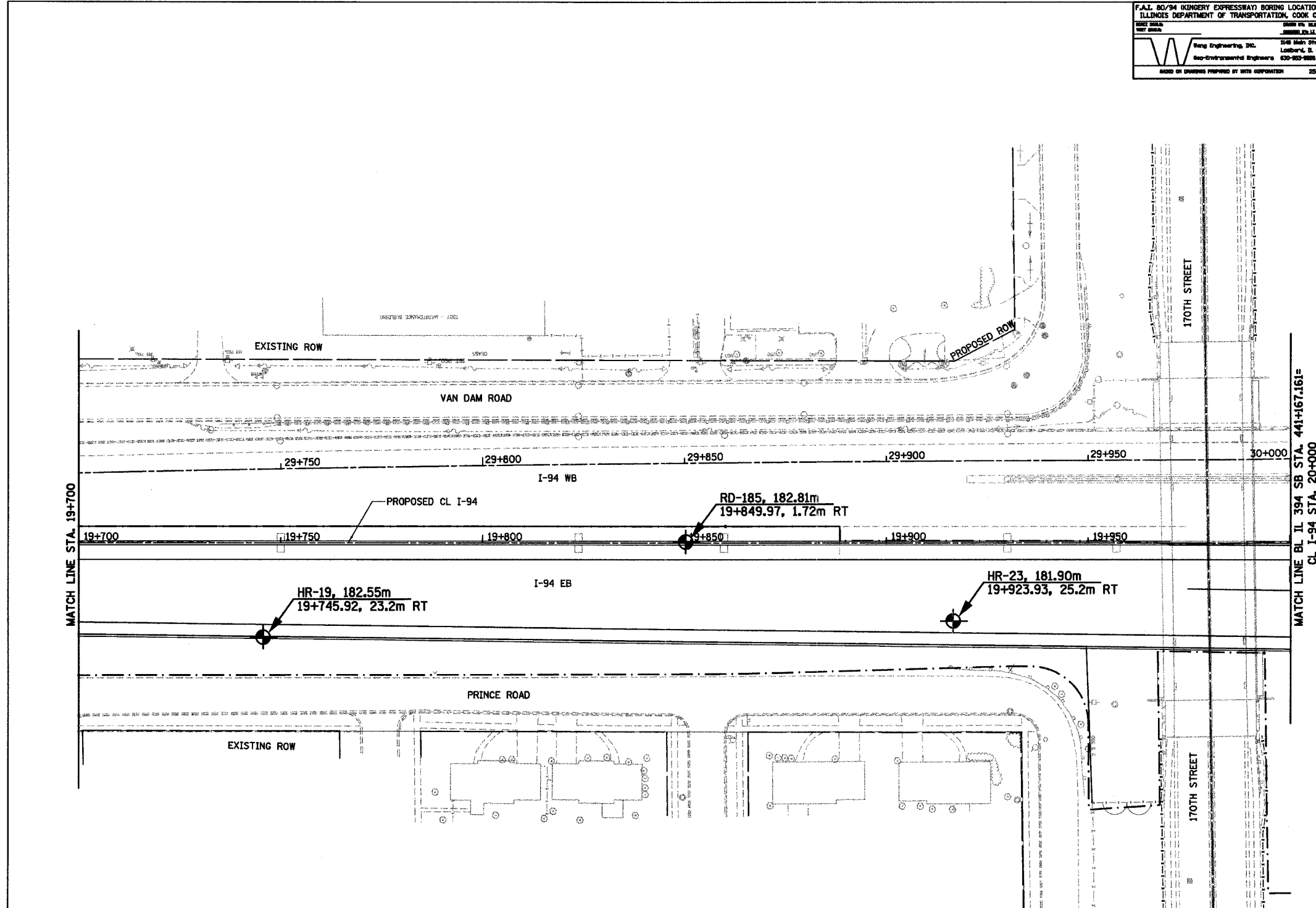
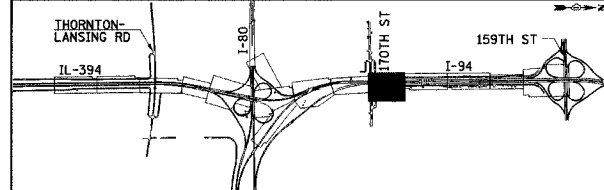


F.A.I. 80/94 (KINGERY EXPRESSWAY) BORING LOCATION PLAN ILLINOIS DEPARTMENT OF TRANSPORTATION, COOK COUNTY		F.A.I. RTE.	SECTION	COUNTY	TOTAL SHEETS NO.
Berg Engineering, Inc. 546 Main Street Lombard, IL 60148 Geo-Environmental Engineers 630-263-8888 BASED ON DRAWINGS PROVIDED BY STATE CORPORATION 225-08-04		80/94	*	COOK	870 179
STA.		TO STA.			
FED ROAD DIST. NO.		ILLINOIS FED. AID PROJECT			



- NOTES:
1. ALL STATIONING AND OFFSET MEASUREMENTS OFF @ I-94 UNLESS OTHERWISE NOTED
 2. ALL DIMENSIONS ARE IN METERS (m) UNLESS OTHERWISE NOTED.



REVISIONS	
NAME	DATE

ILLINOIS DEPARTMENT OF TRANSPORTATION
 I-94 EAST BOUND / IL 394 SOUTH BOUND
SOIL BORING PLAN
 I-94
 STA. 19+700 TO STA. 20+000

HORIZ SCALE: 1:500
 VERT SCALE: 1:500
 DATE: JULY 18, 2005

DRAWN BY:
 CHECKED BY: