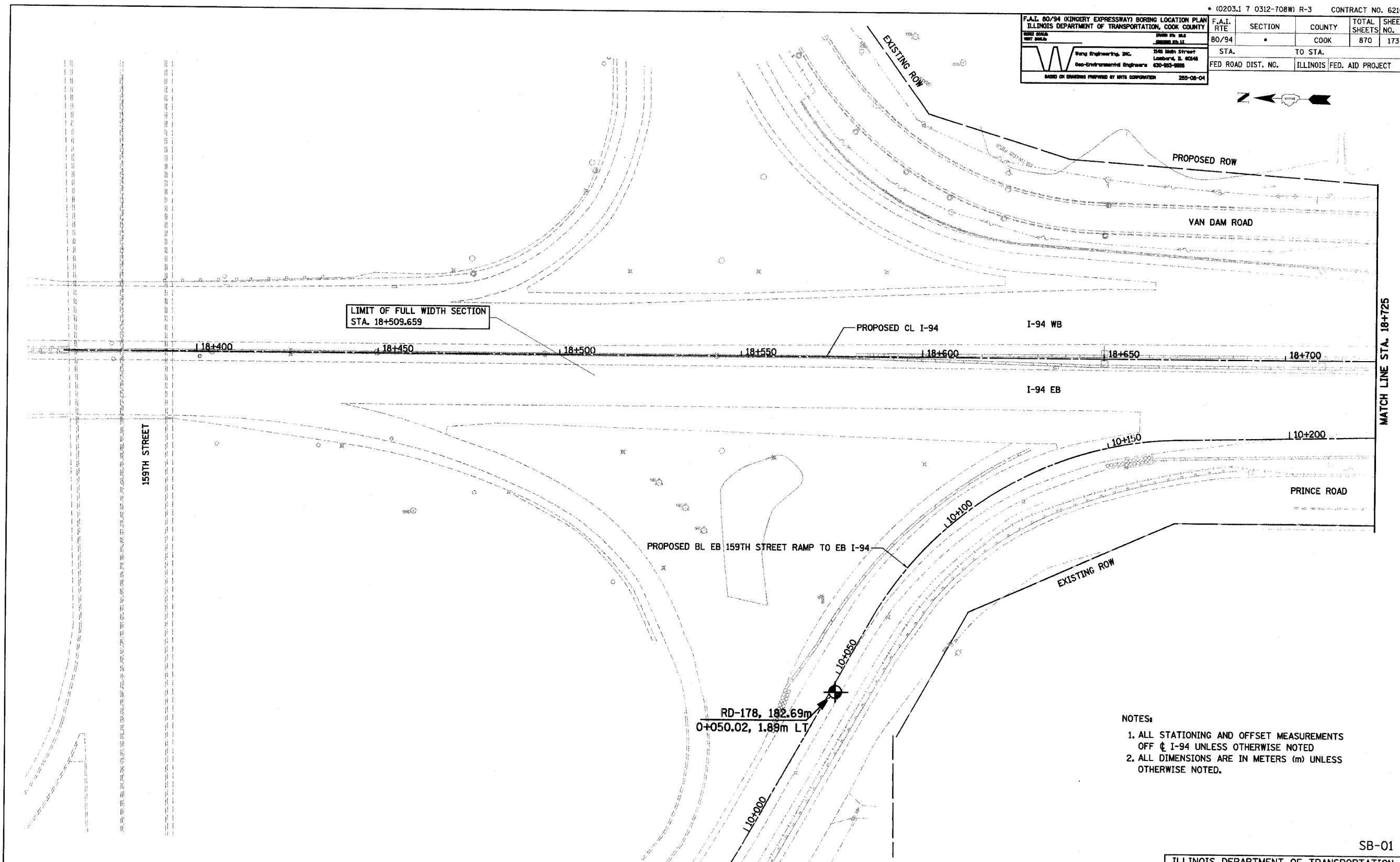


F.A.I. 80/94 (KINGERY EXPRESSWAY) BORING LOCATION PLAN ILLINOIS DEPARTMENT OF TRANSPORTATION, COOK COUNTY		F.A.I. RTE	SECTION	COUNTY	TOTAL SHEETS	SHEET NO.
HORIZ SCALE: 1"=100' VERT SCALE: 1"=10' W&E Engineering, Inc. One-Environmental Engineers 346 16th Street Lombard, IL 60148 630-953-9988 255-08-04		80/94		COOK	870	173
STA.		TO STA.		FED. ROAD DIST. NO.		
				ILLINOIS FED. AID PROJECT		

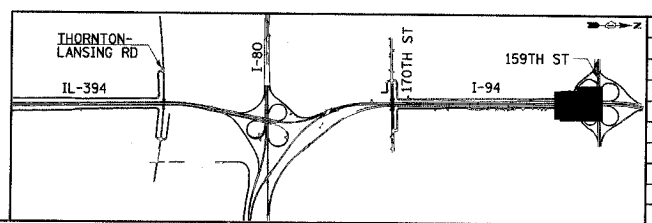


LIMIT OF FULL WIDTH SECTION
STA. 18+509.659

MATCH LINE STA. 18+725

- NOTES:
1. ALL STATIONING AND OFFSET MEASUREMENTS OFF ϕ I-94 UNLESS OTHERWISE NOTED
 2. ALL DIMENSIONS ARE IN METERS (m) UNLESS OTHERWISE NOTED.

SB-01



REVISIONS	
NAME	DATE

ILLINOIS DEPARTMENT OF TRANSPORTATION
I-94 EAST BOUND / IL 394 SOUTH BOUND

SOIL BORING PLAN
I-94
STA. 18+363 TO STA. 18+725

HORIZ SCALE: 1:500
VERT SCALE: 1:500
DATE: JULY 18, 2005

DRAWN BY:
CHECKED BY:

EXISTING