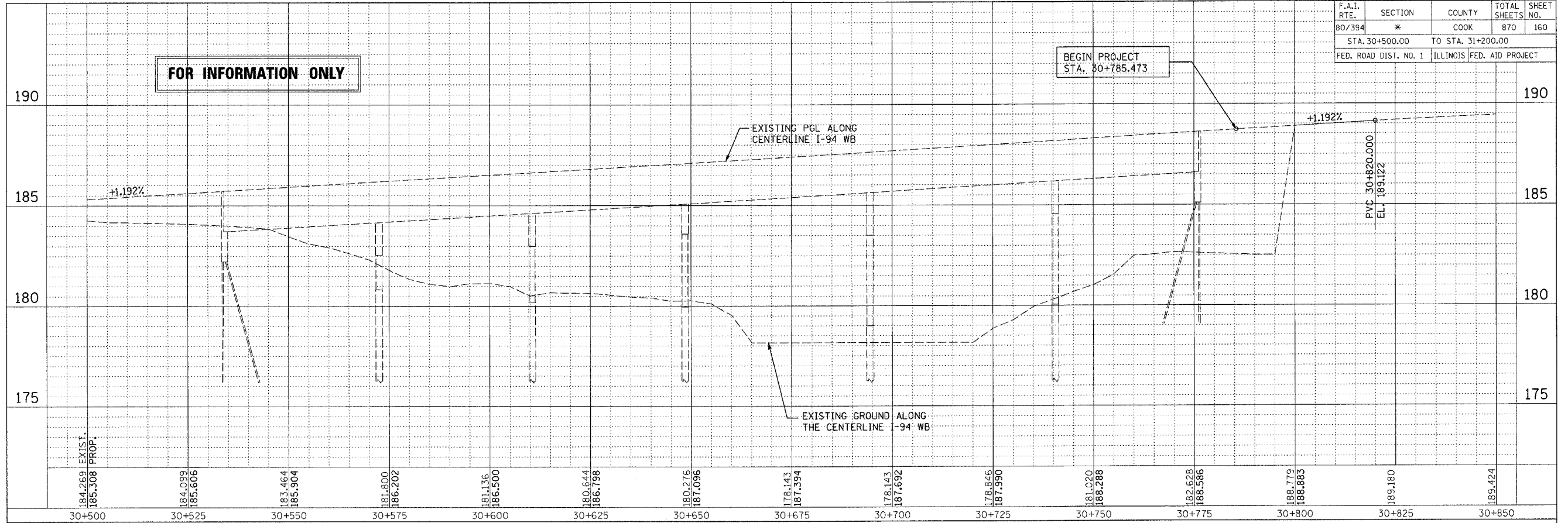
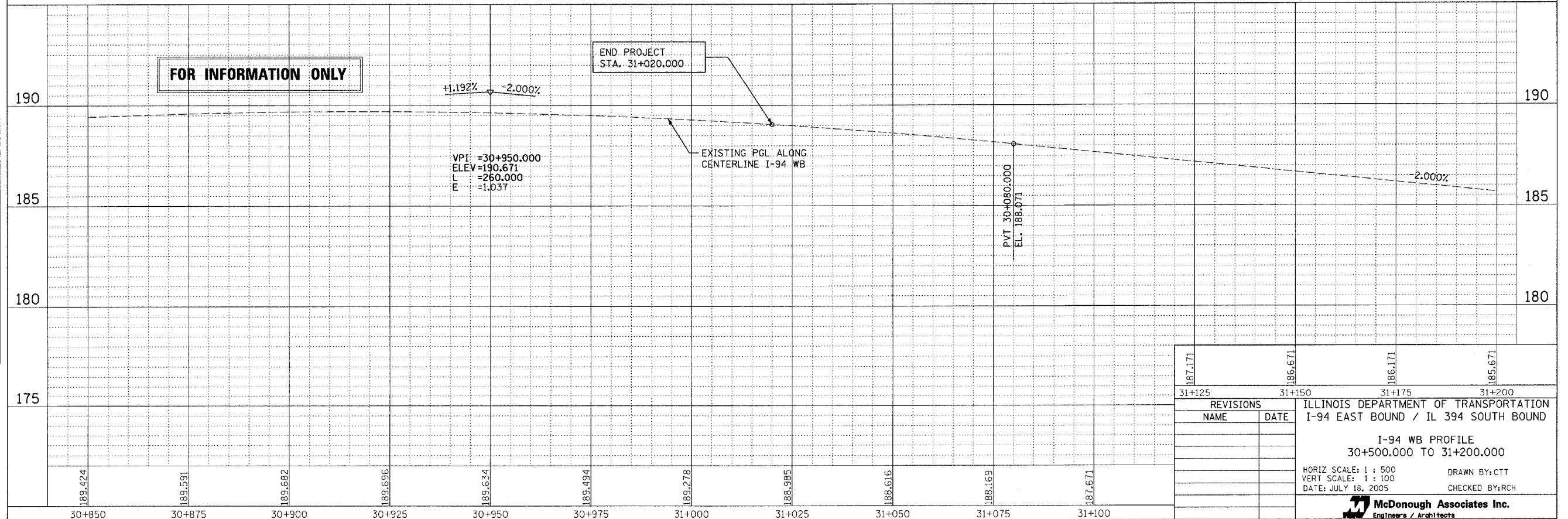


F.A.I. RTE.	SECTION	COUNTY	TOTAL SHEETS	SHEET NO.
80/394	*	COOK	870	160
STA. 30+500.00		TO STA. 31+200.00		
FED. ROAD DIST. NO. 1 ILLINOIS FED. AID PROJECT				

FINAL SURVEYED SURVEY PLOTTED	BY	DATE
NOTE BOOK TEMPLATE AREAS CHECKED		
NO.		



ORIGINAL SURVEYED SURVEY PLOTTED	BY	DATE
NOTE BOOK TEMPLATE AREAS CHECKED		
NO.		



187.171	186.671	186.171	185.671
31+125	31+150	31+175	31+200
REVISIONS		ILLINOIS DEPARTMENT OF TRANSPORTATION	
NAME	DATE	I-94 EAST BOUND / IL 394 SOUTH BOUND	
		I-94 WB PROFILE	
		30+500.000 TO 31+200.000	
		HORIZ SCALE: 1 : 500	DRAWN BY: CTT
		VERT SCALE: 1 : 100	CHECKED BY: RCH
		DATE: JULY 18, 2005	
 McDonough Associates Inc. Engineers / Architects			

Contract 59/19003a.dgn 8/15/2005 9:10:44 AM