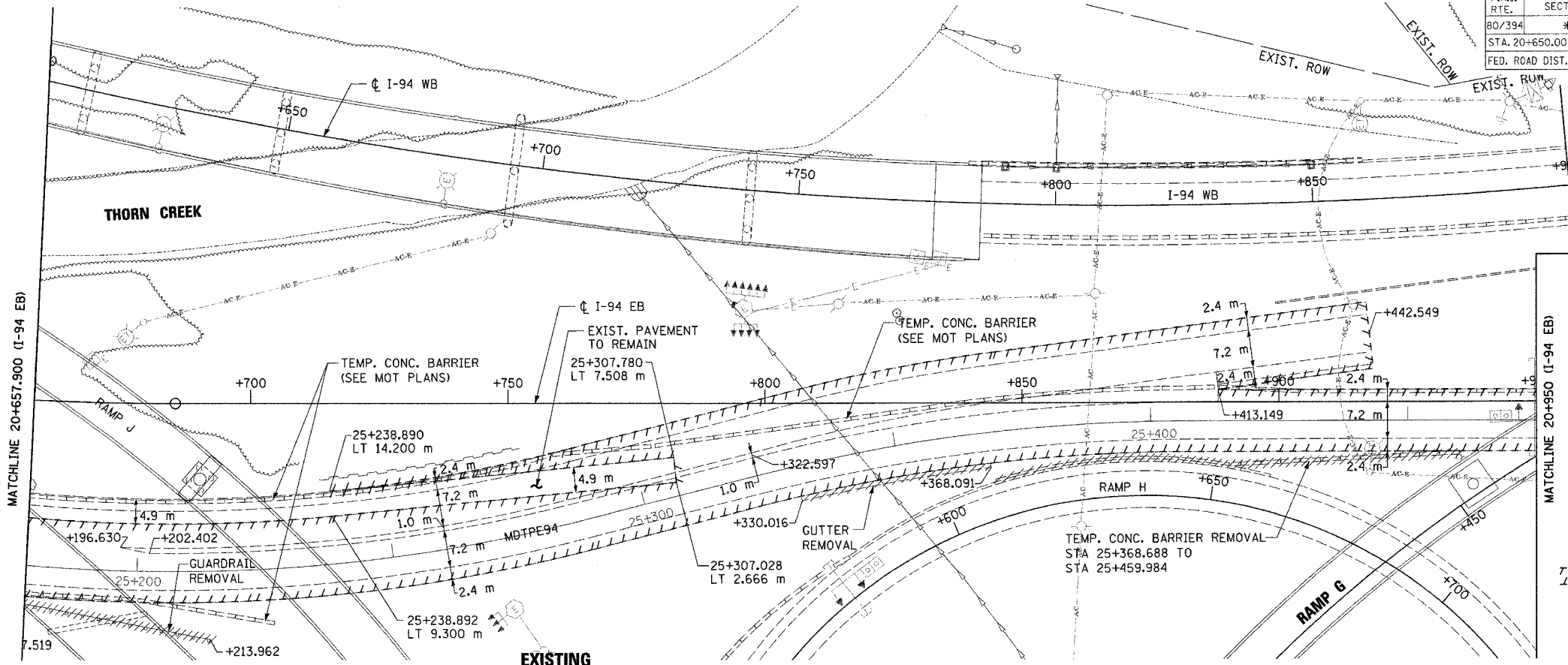
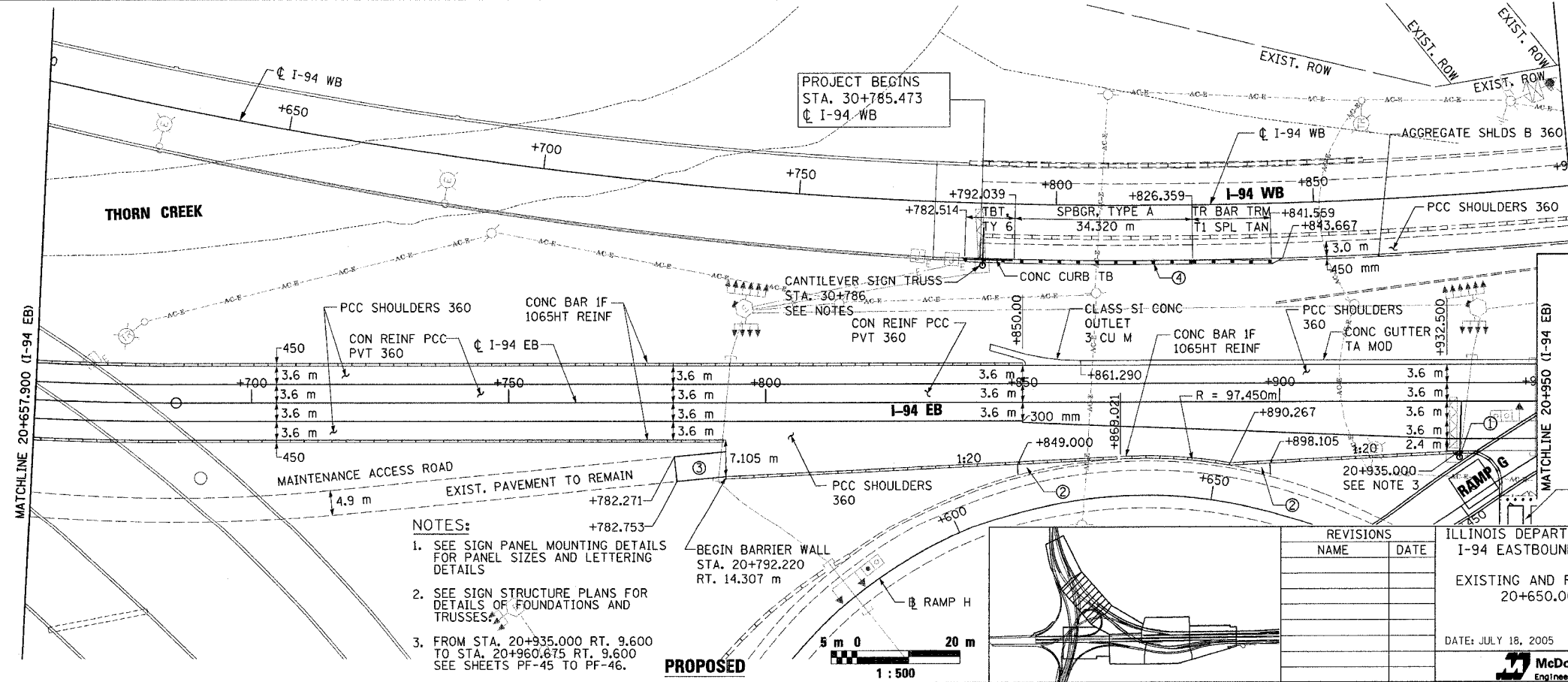


* (0203.1 & 0312-708W) R-3		CONTRACT #62108	
F.A.I. RTE.	SECTION	COUNTY	TOTAL SHEETS NO.
80/394	*	COOK	870 150
STA. 20+650.00		TO STA. 20+950.00	
FED. ROAD DIST. NO. 1		ILLINOIS FED. AID PROJECT	



LEGEND
 / / / / / PAVEMENT REMOVAL



PROJECT BEGINS
 STA. 30+785.473
 CL I-94 WB

- NOTES:**
- SEE SIGN PANEL MOUNTING DETAILS FOR PANEL SIZES AND LETTERING DETAILS
 - SEE SIGN STRUCTURE PLANS FOR DETAILS OF FOUNDATIONS AND TRUSSES
 - FROM STA. 20+935.000 RT. 9.600 TO STA. 20+960.675 RT. 9.600 SEE SHEETS PF-45 TO PF-46.

- CANTILEVER SIGN TRUSS STA. 20+935 SEE NOTES
 - SEE TS-10, DETAIL "A" FOR DETAILS
 - CONSTRUCT BITUMINOUS RAMP. SEE DETAIL ON SHEET IG-11
 - PCC SHOULDERS 150 FOR DETAILS SEE "GUARDRAIL STABILIZATION DETAIL"
- COMM. CENTER SITE
 SEE NOTE 3
PF-24

REVISIONS	
NAME	DATE

ILLINOIS DEPARTMENT OF TRANSPORTATION
 I-94 EASTBOUND / IL 394 SOUTHBOUND
 EXISTING AND PROPOSED ROADWAY PLAN
 20+650.000 TO 20+950.000
 DATE: JULY 18, 2005
 DRAWN BY: CTT
 CHECKED BY: RCH
McDonough Associates Inc.
 Engineers / Architects

