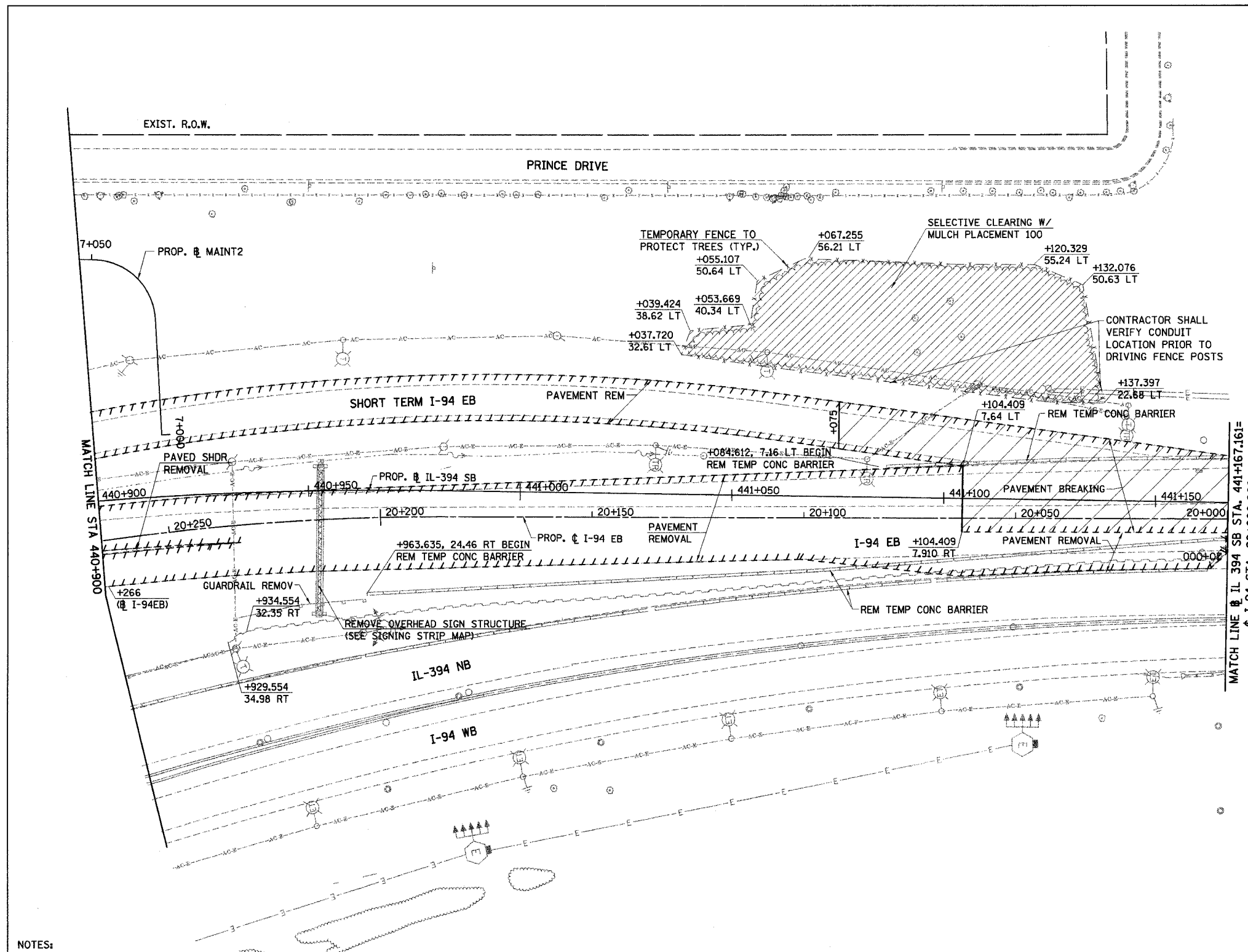


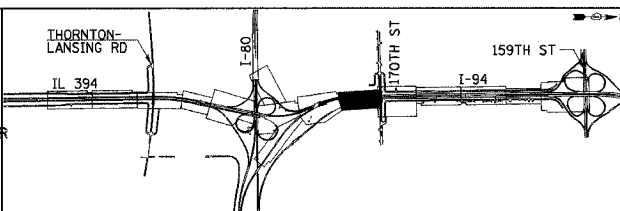
F.A.I. RTE	SECTION	COUNTY	TOTAL SHEETS	SHEET NO.
80/94	*	COOK	870	147
STA.		TO STA.		
FED ROAD DIST. NO.		ILLINOIS FED. AID PROJECT		



**NOTES:**

1. ALL STATIONING AND OFFSET MEASUREMENTS OFF  $\Phi$  IL-394 SB UNLESS OTHERWISE NOTED
2. ALL DIMENSIONS ARE IN METERS (m) UNLESS OTHERWISE NOTED.
3. ALL TREE DIAMETERS ARE IN MILLIMETERS (mm) UNLESS OTHERWISE NOTED.
4. WHERE EXISTING SIGNS INTERFERE WITH CONSTRUCTION OPERATIONS, SEE ARTICLE 107.25 OF THE STANDARD SPECIFICATIONS.
5. SEE CONTRACT 62664 FOR LIGHTING REMOVAL.
6. ADD GEOTECHNICAL FABRIC FOR FRENCH DRAINS ON FRONT FACE OF EXISTING MSE RETAINING WALL. SEE SHEETS 707A & 707B FOR DETAILS.

LEGEND		EXISTING	
	PAVEMENT REMOVAL		TREE REMOVAL
	PAVED SHOULDER REMOVAL		TREE REMOVAL HECTARES
	APPROACH SLAB REMOVAL		SELECTIVE CLEARING
	PAVEMENT BREAKING		SOIL BORING / PAVEMENT CORE NUMBER
	UMINOUS SURFACE REMOVAL, 45MM		ASPHALT PAVEMENT THICKNESS (MM)
			UNLESS OTHERWISE NOTED
			BORING / CORE



REVISIONS	
NAME	DATE

ILLINOIS DEPARTMENT OF TRANSPORTATION  
I-94 EAST BOUND / IL 394 SOUTH BOUND

**EXISTING PLAN**  
IL-394 SB  
STA. 440+900 TO STA. 441+167.161

HORIZ SCALE: 1:500  
VERT SCALE: 1:10  
DATE: JULY 18, 2005

DRAWN BY: BAJ  
CHECKED BY: JES

