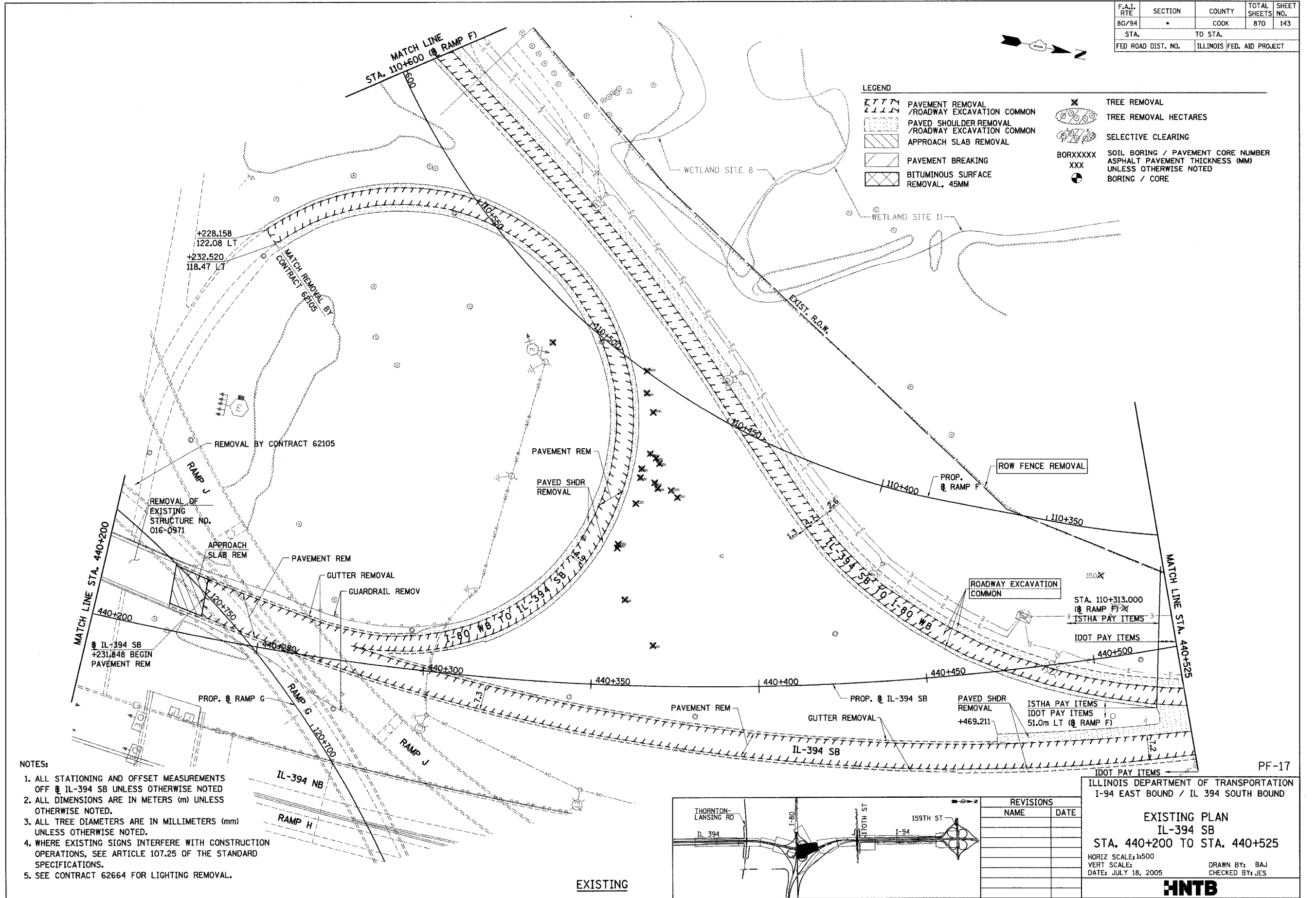


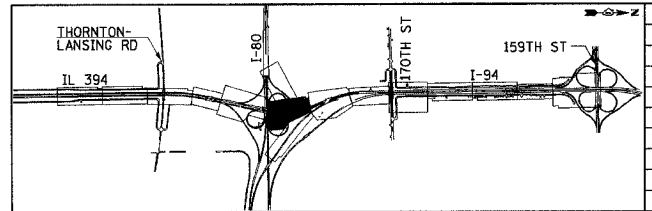
F.A.I. RTE	SECTION	COUNTY	TOTAL SHEETS	SHEET NO.
80/94		COOK	870	143
STA.	TO STA.			
FED ROAD DIST. NO.	ILLINOIS FED. AID PROJECT			



**LEGEND**

	PAVEMENT REMOVAL /ROADWAY EXCAVATION COMMON		TREE REMOVAL
	PAVED SHOULDER REMOVAL /ROADWAY EXCAVATION COMMON		TREE REMOVAL HECTARES
	APPROACH SLAB REMOVAL		SELECTIVE CLEARING
	PAVEMENT BREAKING	BORXXXXX	SOIL BORING / PAVEMENT CORE NUMBER
	BITUMINOUS SURFACE REMOVAL, 45MM	XXX	ASPHALT PAVEMENT THICKNESS (MM) UNLESS OTHERWISE NOTED
			BORING / CORE

- NOTES:**
1. ALL STATIONING AND OFFSET MEASUREMENTS OFF @ IL-394 SB UNLESS OTHERWISE NOTED
  2. ALL DIMENSIONS ARE IN METERS (m) UNLESS OTHERWISE NOTED.
  3. ALL TREE DIAMETERS ARE IN MILLIMETERS (mm) UNLESS OTHERWISE NOTED.
  4. WHERE EXISTING SIGNS INTERFERE WITH CONSTRUCTION OPERATIONS, SEE ARTICLE 107.25 OF THE STANDARD SPECIFICATIONS.
  5. SEE CONTRACT 62664 FOR LIGHTING REMOVAL.



REVISIONS	
NAME	DATE

ILLINOIS DEPARTMENT OF TRANSPORTATION  
 I-94 EAST BOUND / IL 394 SOUTH BOUND

**EXISTING PLAN**  
 IL-394 SB  
 STA. 440+200 TO STA. 440+525

HORIZ SCALE: 1:500  
 VERT SCALE:  
 DATE: JULY 18, 2005

DRAWN BY: BAJ  
 CHECKED BY: JES

**HNTB**

EXISTING

PF-17