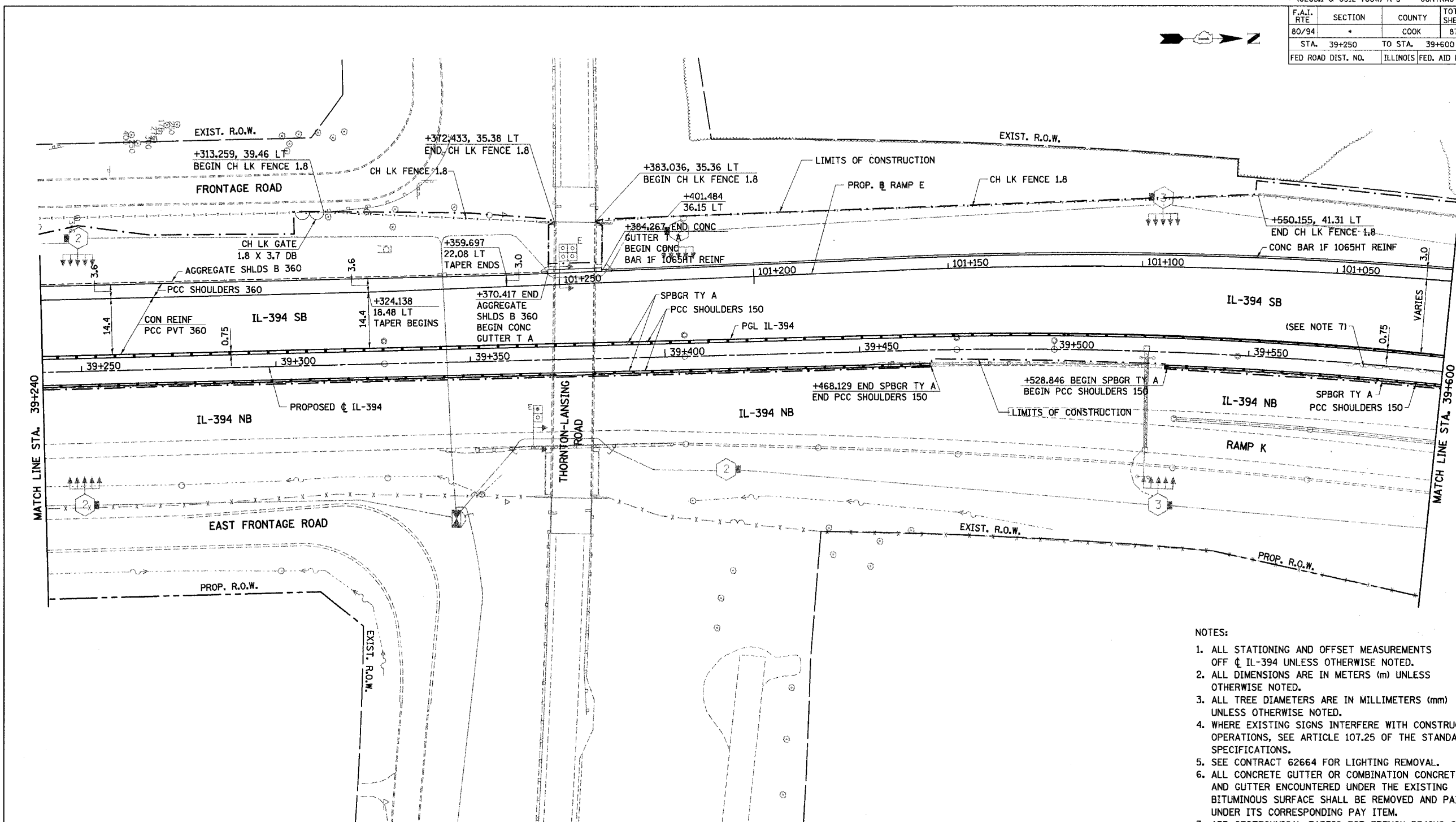


F.A.I. RTE	SECTION	COUNTY	TOTAL SHEETS NO.	SHEET NO.
80/94	*	COOK	870	138
STA. 39+250		TO STA. 39+600		
FED ROAD DIST. NO.		ILLINOIS FED. AID PROJECT		



- NOTES:
1. ALL STATIONING AND OFFSET MEASUREMENTS OFF ϕ IL-394 UNLESS OTHERWISE NOTED.
 2. ALL DIMENSIONS ARE IN METERS (m) UNLESS OTHERWISE NOTED.
 3. ALL TREE DIAMETERS ARE IN MILLIMETERS (mm) UNLESS OTHERWISE NOTED.
 4. WHERE EXISTING SIGNS INTERFERE WITH CONSTRUCTION OPERATIONS, SEE ARTICLE 107.25 OF THE STANDARD SPECIFICATIONS.
 5. SEE CONTRACT 62664 FOR LIGHTING REMOVAL.
 6. ALL CONCRETE GUTTER OR COMBINATION CONCRETE CURB AND GUTTER ENCOUNTERED UNDER THE EXISTING BITUMINOUS SURFACE SHALL BE REMOVED AND PAID FOR UNDER ITS CORRESPONDING PAY ITEM.
 7. ADD GEOTECHNICAL FABRIC FOR RETAINING DRAINS ON FRONT FACE OF EXISTING MSE RETAINING WALL. SEE SHEETS 707A & 707B FOR DETAILS.

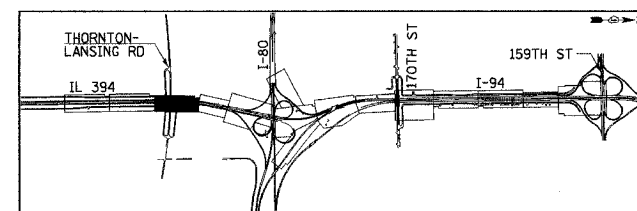
PF-12

ILLINOIS DEPARTMENT OF TRANSPORTATION
I-94 EAST BOUND / IL 394 SOUTH BOUND

PROPOSED PLAN
IL-394
STA. 39+240 TO STA. 39+600

HORIZ SCALE: 1:500
VERT SCALE:
DATE: JULY 18, 2005
DRAWN BY: BAJ
CHECKED BY: JES

HNTB



REVISIONS	
NAME	DATE

PROPOSED